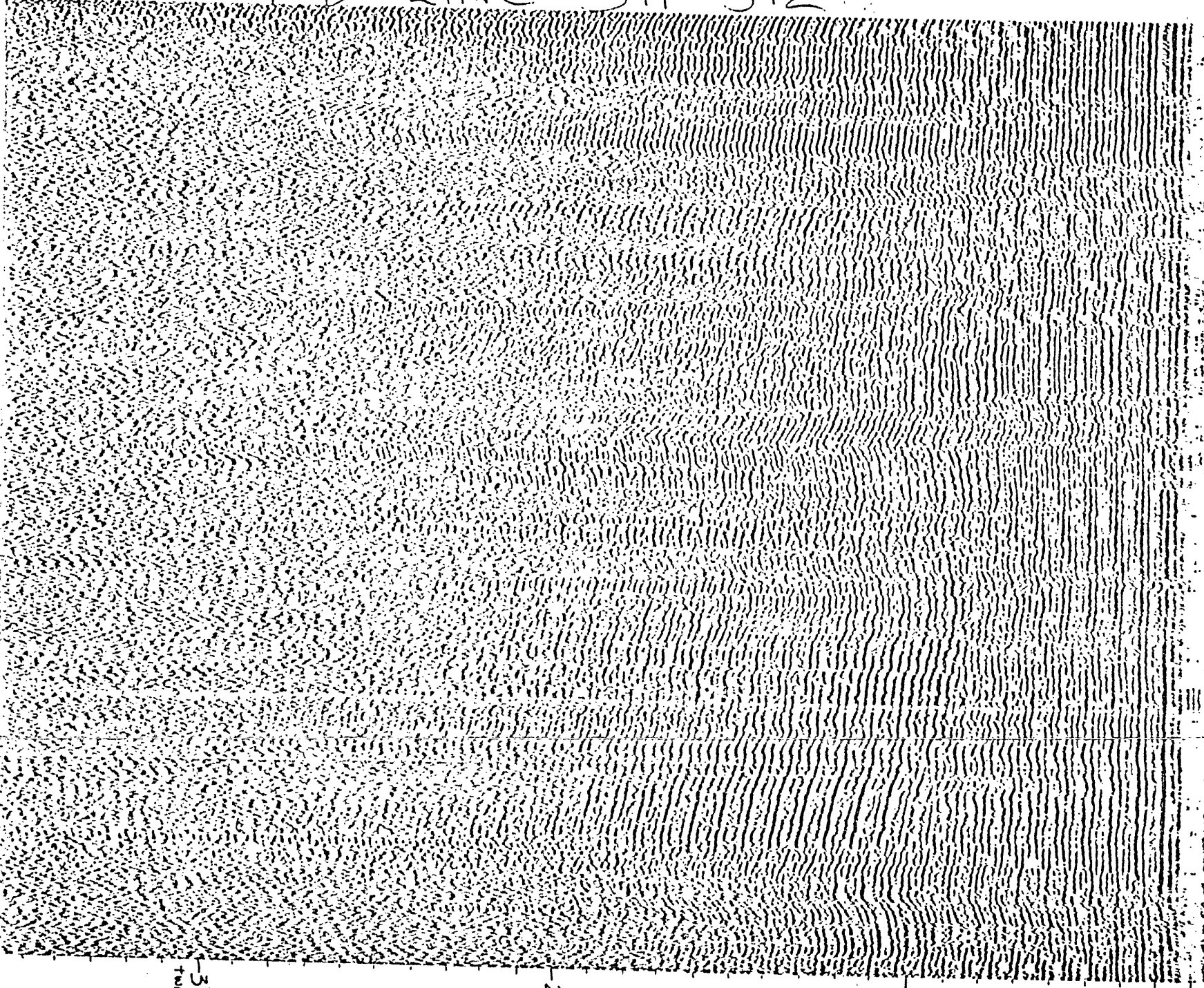


END LINE 371-372



0305
JD 253
0300
117°T8K
371-372
T-060

0230
160KJ
4/4 60/20

JD 253
0200
117°T8K
371-372

WATER DEPTH
IN METERS

3 sec
two-way time

LEG

371-372

DATE & TIME (ALASKA DAVLIGHT TIME)
SEPT. 10 (JD 253) 0158-0305

COURSE (DEGREES FROM TRUE NORTH)
117°

STEER (DEGREES)
8 kn

SLEEP RATE (SECONDS)
4 sec

FILE RATE (SECONDS)
4 sec

POWER (VOLTAGES/CALIC INCHES OF AIR)
160/6

FILTER SETTINGS (HIGH & LOW LIMITS IN HERTZ)
60/20

Profile released without editorial and technical
review for conformity to Geological Survey standards.

U.S. GEOLOGICAL SURVEY
LIBRARY
DENVER
JAN 28 1974

no. 1944
R 290
(300)