

(300)
R298
mo. 1944

0305

JD 253
- 0300
117° 18' K
371-372
T-D60

0230
160 KJ
449 60/20

JD 253
0200
117° 18' K
371-372

WATER DEPTH
IN METERS

LEG

371-372

DATE & TIME (ALASKA DAYLIGHT TIME)

SEPT 10 (JD 253) 0158-0305

COURSE (DEGREES FROM TRUE NORTH)

117°

SPEED (KNOTS)

8 kn.

SWEEP RATE (SECONDS)

4 sec

FIRE RATE (SECONDS)

4 sec

POWER (KILOJULES/CUBIC INCHES OF AIR)

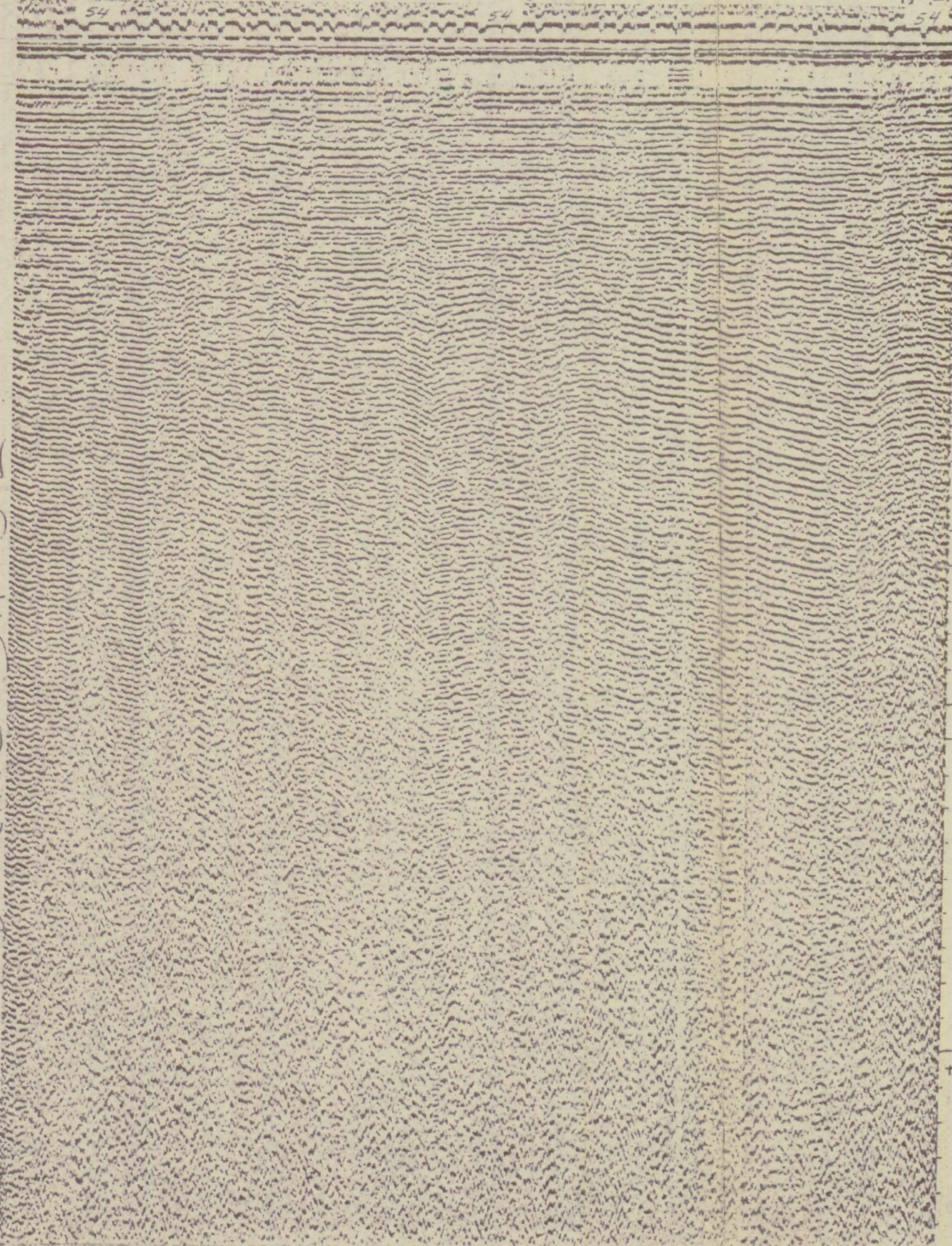
160/0

FILTER SETTINGS (HIGH & LOW LIMITS IN HERTZ)

60/20

Profile released without editorial and technical
review for conformity to Geological Survey standards.

END LINE 371-372



3 sec
two-way time

HAUGSET/CHAMBER SEA, SEISMIC REFLECTION PROFILES, 1974
U.S. GEOLOGICAL SURVEY, PALM SPRING ISLAND

(U.S. GEOLOGICAL SURVEY
OPEN-FILE REPORT, 1974)

U.S. GEOLOGICAL SURVEY
LIBRARY
JAN 23 1974
DENVER