

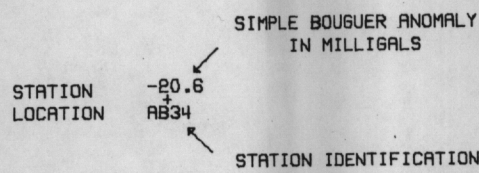
MAILED, EDITED, AND PUBLISHED BY THE GEOLOGICAL SURVEY

THIS MAP IS PRELIMINARY AND HAS NOT BEEN REVIEWED FOR CONFORMITY WITH U.S. GEOLOGICAL SURVEY STANDARDS AND NOMENCLATURE.

GRAVITY SURVEYS 1960 TO 1975

GRAVITY INVESTIGATIONS PARTIALLY SUPPORTED BY ALASKA DIVISION OF GEOLOGICAL AND GEOPHYSICAL SURVEYS AND US OFFICE OF NAVAL RESEARCH

DATA REDUCED WITH THE 1967 INTERNATIONAL ELLIPSOID  
PLOT DATE: 1/10/76

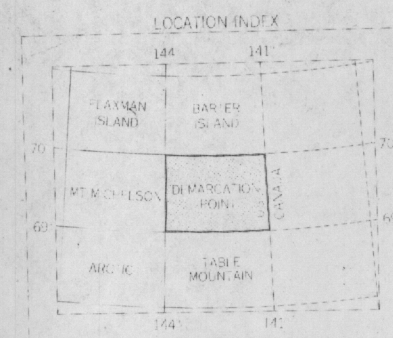


GENERALIZED SIMPLE BOUGUER ANOMALY CONTOURS, DASHED WHERE POORLY CONTROLLED, AND SMOOTHED TO AVOID DISCREPANCIES CAUSED BY LOCAL TERRAIN  
CONTOUR INTERVAL: 10 MILLIGALS

SCALE 1:250000

DEMARICATION POINT GRAVITY DATA

BY BRUCE A. KOSOSKI, DAVID F. BARNES AND CHARLES F. MAYFIELD  
U.S. GEOLOGICAL SURVEY  
1976



GRAVITY DATUM FROM: BARNES, D.F., U.S. GEOLOGICAL SURVEY OPEN FILE REPORTS, 1968 & 1976, ADJUSTED TO THE 1971 INTERNATIONAL GRAVITY NET (1969 71)

SIMPLE BOUGUER ANOMALY  
BASED ON A DENSITY OF 2670  
KILOGRAMS PER CUBIC METRE  
DEMARICATION POINT, ALASKA