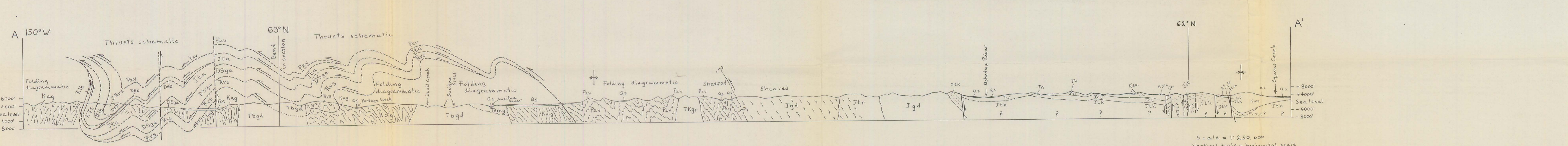


Silberling and others, 1978  
 Modified after Smith, 1974, 1976  
 Turner and Smith, 1974  
 Smith and others, 1975  
 Csejtey & others  
 Anderson, 1967  
 O.J. Ferrians, Jr. & J.E. Williams, unpublished data  
 Dettmerman & others, 1976  
 Conata, 1960, 1966  
 Burnes, 1956

Base by U.S. Geological Survey, 1954, 1956, 1962

INDEX TO GEOLOGIC MAPPING



RECONNAISSANCE GEOLOGIC MAP AND GEOCHRONOLOGY, TALKEETNA MOUNTAINS QUADRANGLE,  
NORTHERN PART OF ANCHORAGE QUADRANGLE, AND SOUTHWEST CORNER OF HEALY QUADRANGLE, ALASKA

By  
 Béla Csejtey, Jr., W.H. Nelson, D.L. Jones, N.J. Silberling,  
 R.M. Dean, M.S. Morris, M.A. Lanphere, J.G. Smith,  
 and M.L. Silberman

This report is preliminary and has not been edited or reviewed for conformity with Geological Survey standards and nomenclature.