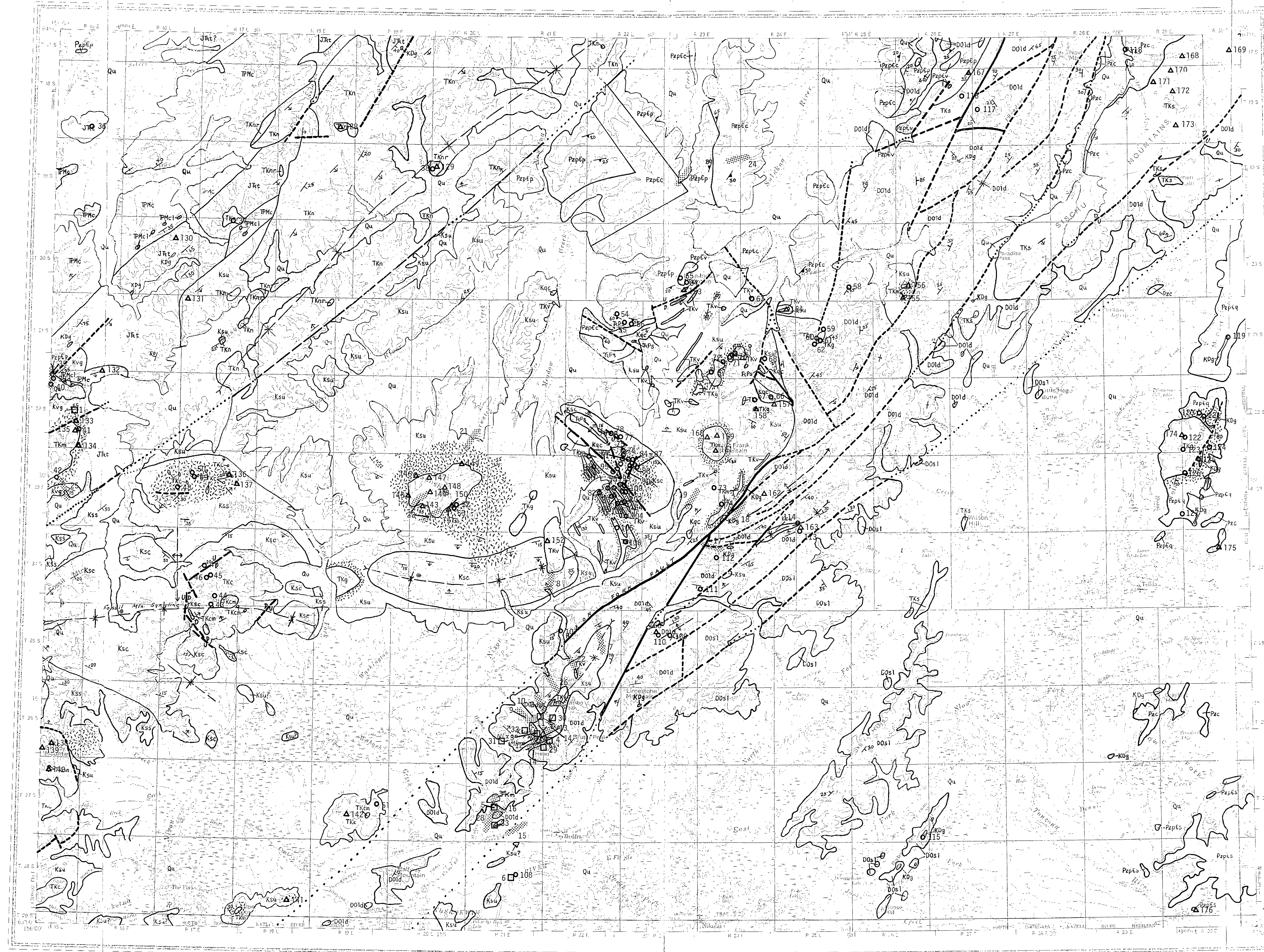
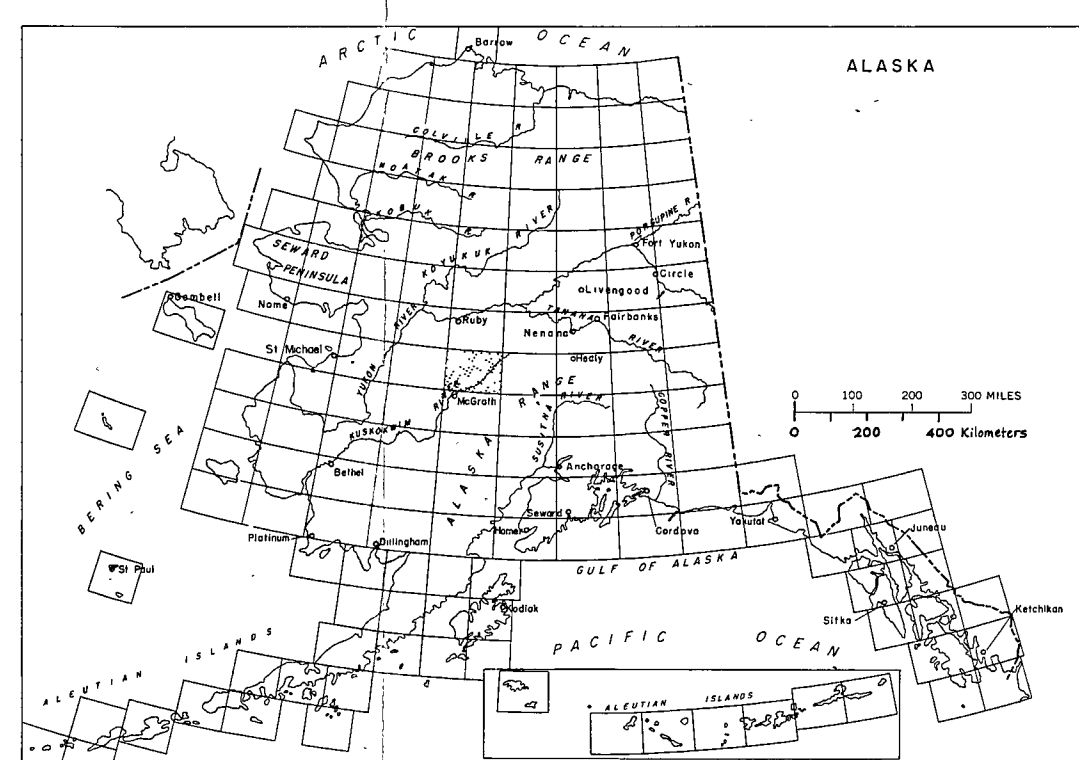
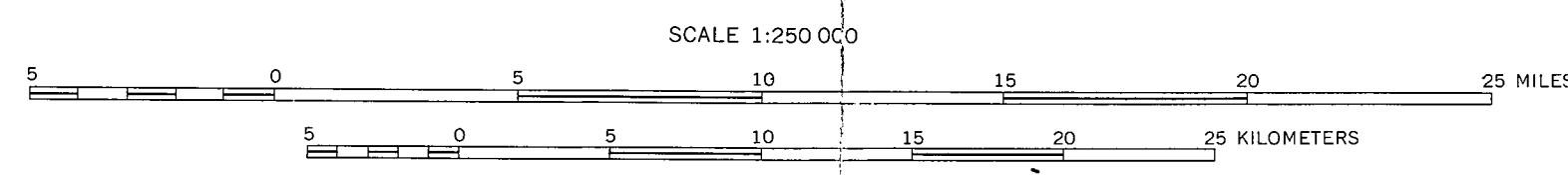


MEDFRA



Base generalized geologic map of the Medfra Quadrangle, Alaska and U.S. Geological Survey 1:50,000 Alaska Topographic Series: Medfra, 1959.



INDEX MAP SHOWING LOCATION OF MEDFRA QUADRANGLE, ALASKA

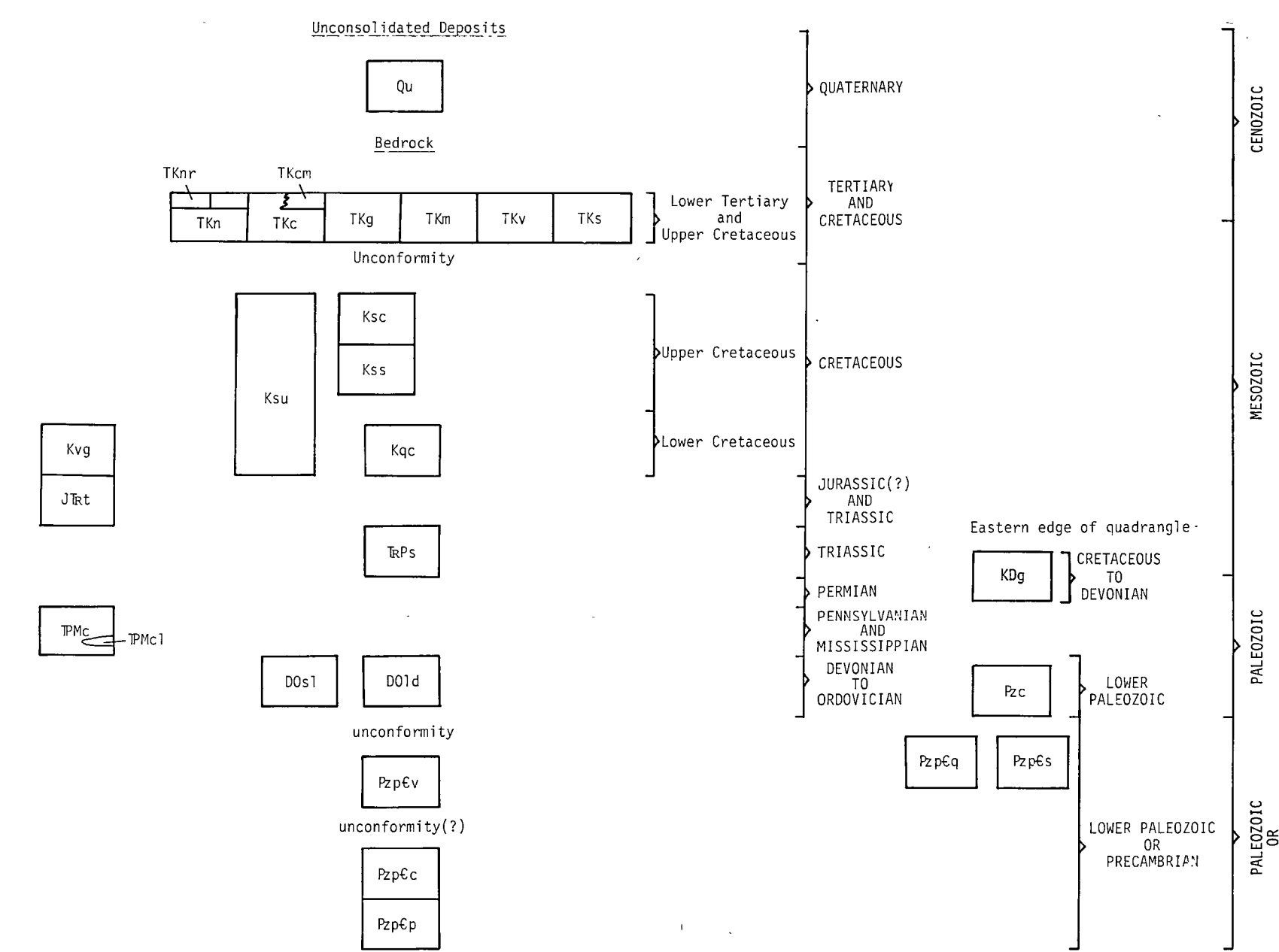
MINERAL OCCURRENCE MAP OF THE
MEDFRA QUADRANGLE, ALASKA

by
C. E. Schwab, W.W. Patton, Jr. and E. J. Moll

1981

Explanation for Generalized Geologic Map

CORRELATION OF MAP UNITS



DESCRIPTION OF MAP UNITS

- Qu UNDIFFERENTIATED SURFICIAL DEPOSITS
- Tkbc VOLCANIC ROCKS OF THE KODIAK RIVER AREA—chiefly trachyandesite, basaltic andesite, and basalt flows. Thin—rhyolite domes.
- Tkbc MAPS TO INTERMEDIATE VOLCANIC-PLUTONIC COMPLEXES—altered basalts, andesite, and trachyandesite flows and dykes, flows, and plugs.
- Tkbc Thin—Small bodies of monzonite, quartz monzonite, and granodiorite
- Tkbc GRANITE
- Tkbc MONZONITE
- Tkbc VOLCANIC ROCKS OF ALEKH FORK-UPPER BILGONA RIVER AREA—rhyolite, dacite, and trachyandesite sills, dikes, flows, and plugs
- Tkbc VOLCANIC ROCKS OF THE SICHU MOUNTAINS—rhyolite and dacite flows and dikes
- Tkbc GABBRO
- Ksu UNDIFFERENTIATED SHALE, SILTSTONE, AND SANDSTONE
- Ksu NONWAVING SANDSTONE AND QUARTZ-CHEST CONGLOMERATE
- Ksu MARINE SANDSTONE, SILTSTONE, AND SHALE
- Ksu QUARTZ-CARBONATE SANDSTONE AND PEBBLY MUDSTONE
- Ksu VOLCANIC GRANITE AND CONGLOMERATE
- Jbt CHERT, CRYSTAL AND LITHIC TUFFS, AND VOLCANIC BRECCIA
- Kps SANDSTONE, SANDY LIMESTONE, SPIDULITE, AND CONGLOMERATE
- Pmc CHERT AND LIMESTONE—chiefly radiolarian chert. Pmc1—Limestone.
- Ds1 SILTY LIMESTONE
- Dol LIMESTONE AND DOLOMITE
- Pc CHERT AND PHANLITE
- Ppqt QUARTZITE, GAIT, AND ARGILLITE
- Ppqs SHEARED GRIT, QUARTZITE, AND QUARTZ-MICA SCHIST
- Ppqr METAVOLCANIC ROCKS—Metarhyolite and dacite
- Ppqc CALC-SCHIST
- Ppqp PELTIC SCHIST

GEOLOGIC SYMBOLS

- Contact—Includes approximately located, inferred, and indefinite
- Fault—Dashed where approximately located, short dashed where inferred, dotted where concealed. U, upthrown side; D, downthrown side
- Anticline—Showing direction of plunge
- Syncline—Showing direction of plunge
- Strike and dip of beds. May include overturned beds
- Strike of vertical beds
- Horizontal beds
- Strike and dip of beds based on photointerpretation or distant observation
- Strike and dip of foliation
- Zone of horrelets

Explanation for Mineral Occurrence Map

- Location of stream placer showing general location on stream drainage
- Location of lode claim or mine
- Occurrence of sulfides and other indicators of mineralization
- Location of bedrock samples containing geochemical anomalies, but no visible mineralization

This report is preliminary and has not been edited or reviewed for conformity with Geological Survey standards and nomenclature.