

PROPERTY OF
DGS LIBRARY

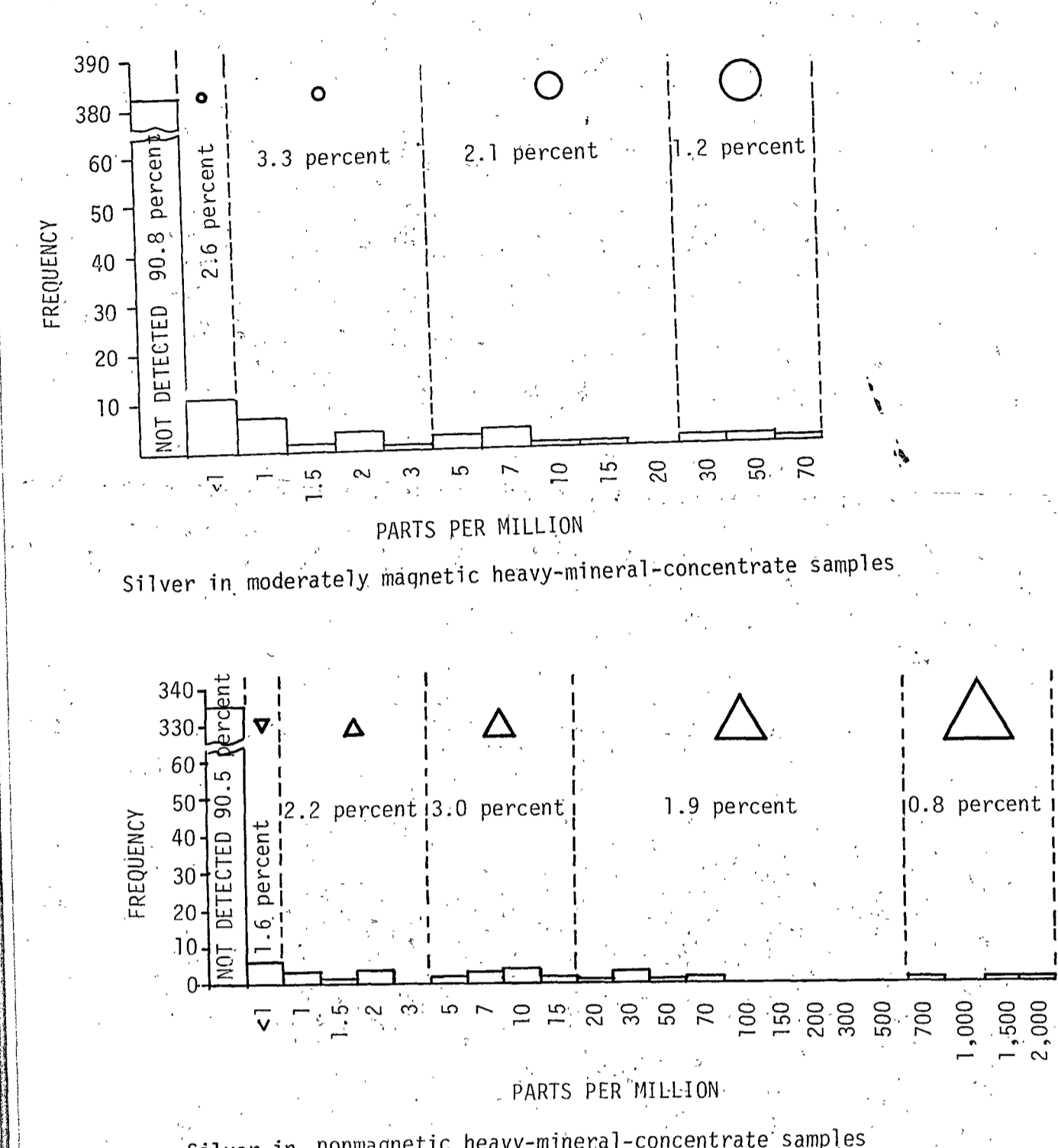
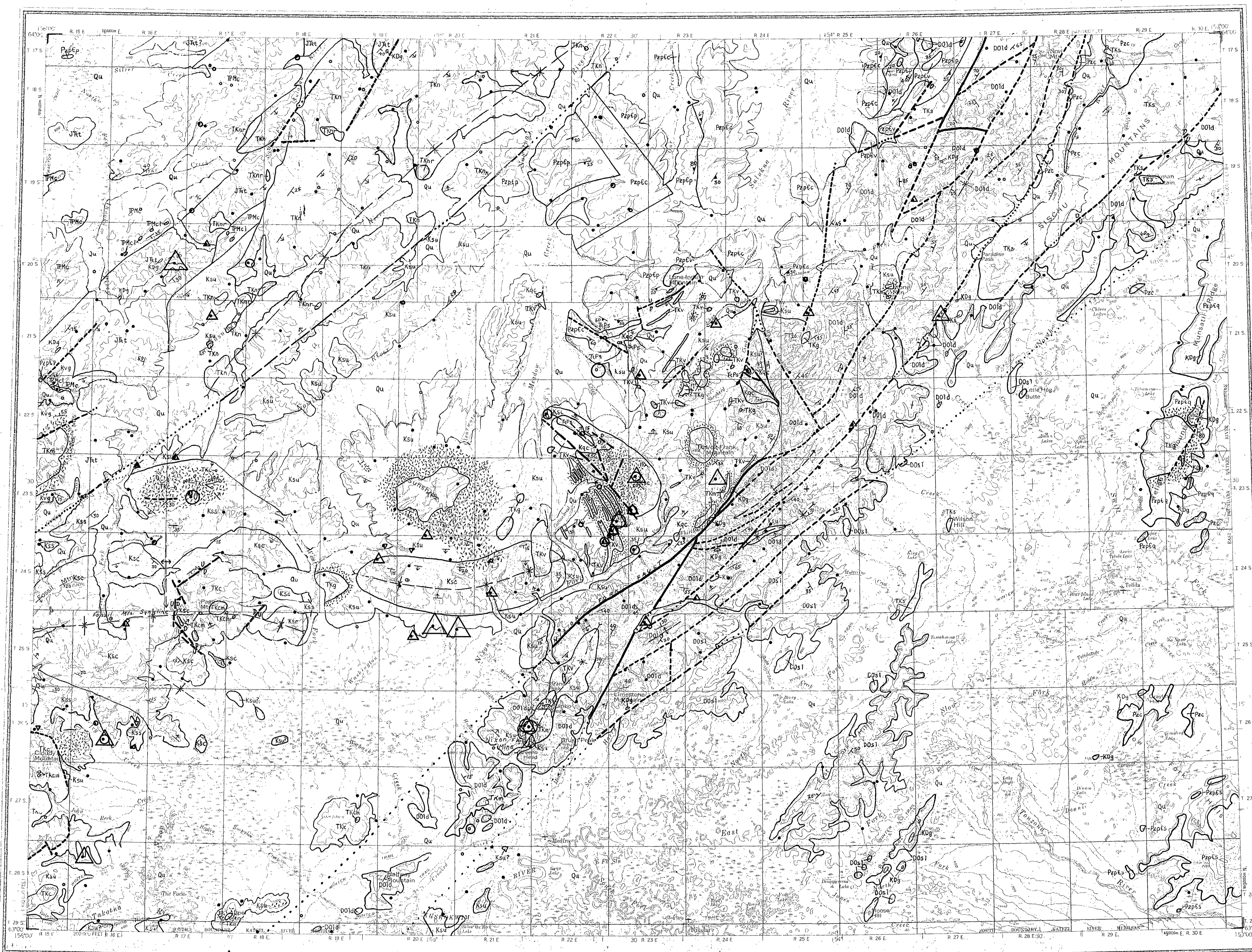
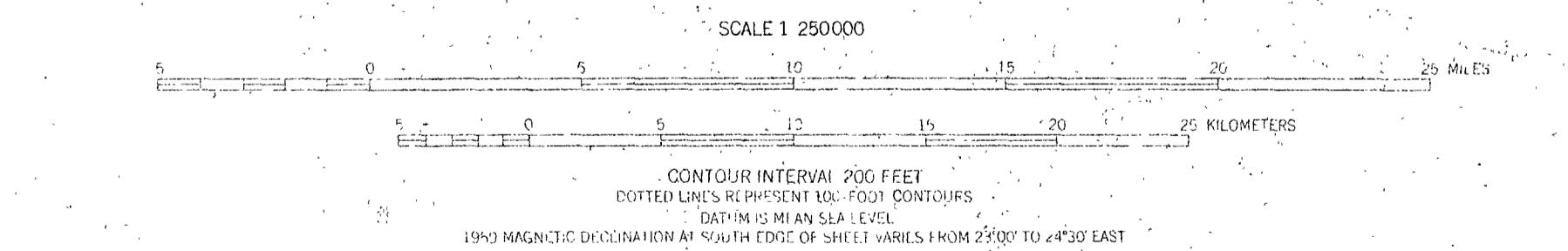


Figure 2.--Histograms for silver in 370 nonmagnetic and 422 moderately magnetic heavy-mineral-concentrate samples, Medfra quadrangle, Alaska, showing symbols denoting anomalous concentrations, and percentage of total number of samples represented by each range.

- EXPLANATION OF SAMPLE-SITE SYMBOLS
- Nonmagnetic and moderately magnetic heavy-mineral-concentrate samples
 - + Nonmagnetic heavy-mineral-concentrate samples
 - Moderately magnetic heavy-mineral-concentrate samples

Base from U.S. Geological Survey, 1959

Geology generalized from Patton and others, 1980



SILVER IN NONMAGNETIC AND MODERATELY MAGNETIC HEAVY-MINERAL-CONCENTRATE SAMPLES
DISTRIBUTION AND ABUNDANCE OF GOLD AND SILVER IN NONMAGNETIC AND MODERATELY MAGNETIC HEAVY-MINERAL-CONCENTRATE AND MINUS-80-MESH STREAM-SEDIMENT SAMPLES
AND SILVER IN ASH OF AQUATIC-BRYOPHYTE SAMPLES, MEDFRA QUADRANGLE, ALASKA

By H. D. King, E. F. Cooley, A. L. Gruzensky, and D. L. SPIESMAN, Jr.
1983