

PROPERTY OF  
DGS LIBRARY

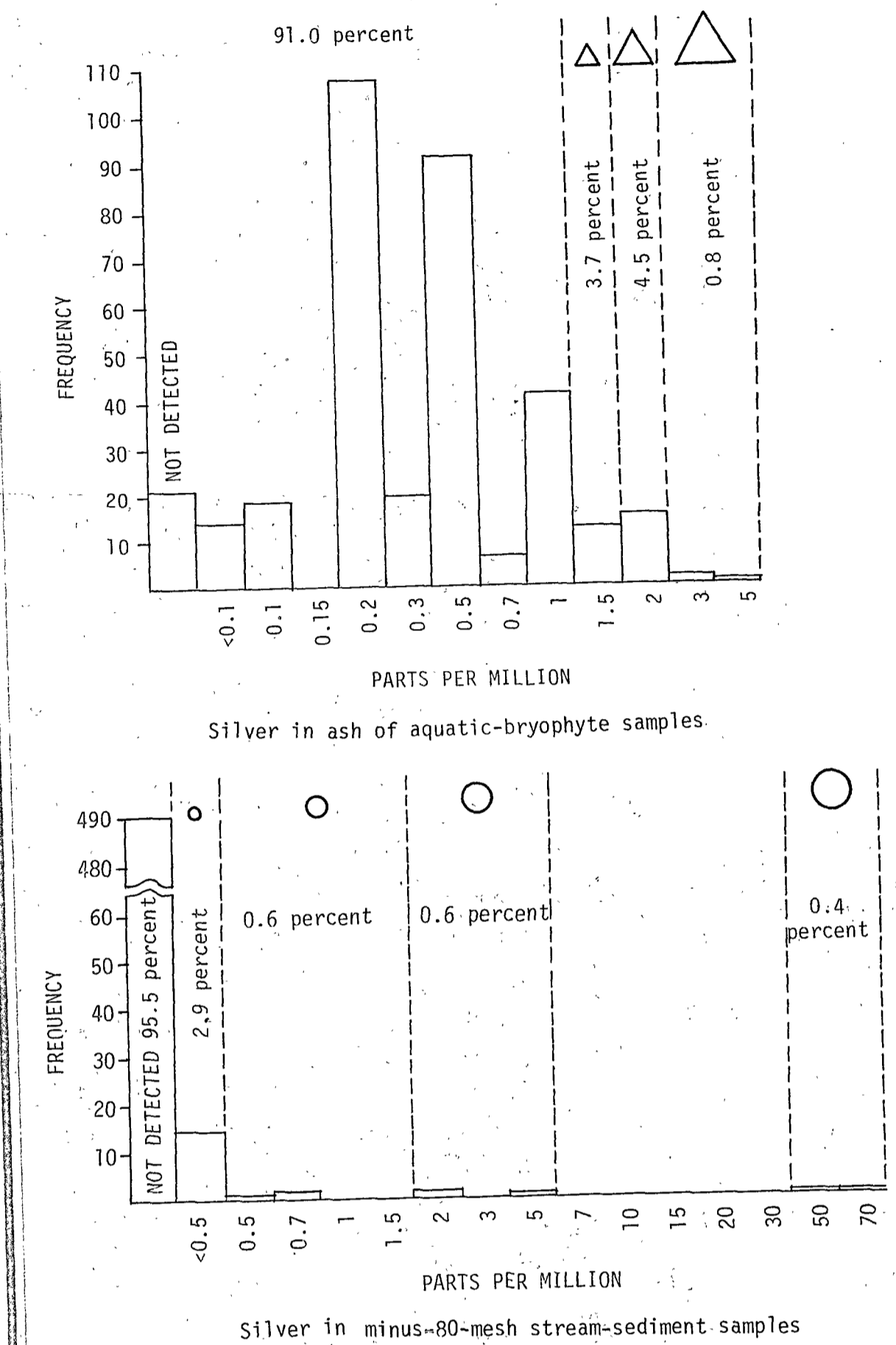
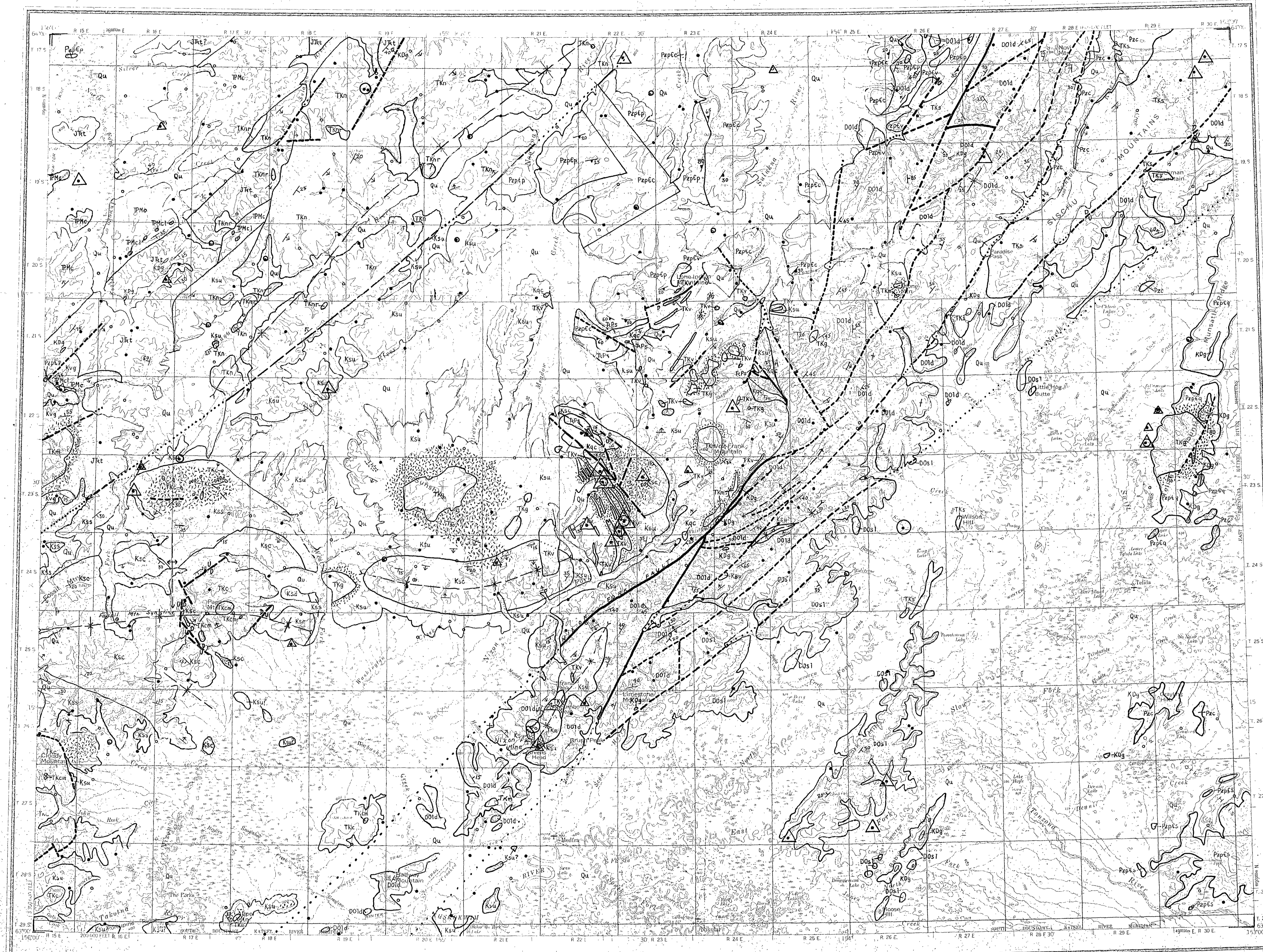


Figure 3.--Histograms for silver in 513 minus-80-mesh stream-sediment and 355 ash of aquatic-bryophyte samples, Medfra quadrangle, Alaska, showing symbols denoting anomalous concentrations, and percentage of total number of samples represented by each range.

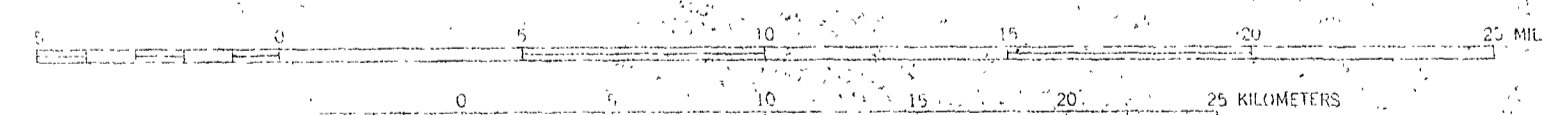
EXPLANATION OF SAMPLE-SITE SYMBOLS

- Minus-80-mesh stream-sediment samples and ash of aquatic-bryophyte samples
- Minus-80-mesh stream-sediment samples
- + Ash of aquatic-bryophyte samples

Base from U.S. Geological Survey, 1959

SCALE 1:250000

Geology generalized from Patton and others, 1980



CUTLINE INTERVAL 200 FEET  
DARTS (H) BASELINE TO 100 FEET ELEVATION  
DATA IS MEAN SEA LEVEL  
WITH ANGLE OF INCIDENCE AT 90° TO THE EDGE OF SHEET (ARCS FROM CENTER TO EDGE EAST)

SILVER IN MINUS-80-MESH STREAM-SEDIMENT AND ASH OF AQUATIC-BRYOPHYTE SAMPLES  
DISTRIBUTION AND ABUNDANCE OF GOLD AND SILVER IN NONMAGNETIC AND MODERATELY MAGNETIC HEAVY-MINERAL-CONCENTRATE AND MINUS-80-MESH STREAM-SEDIMENT SAMPLES  
AND SILVER IN ASH OF AQUATIC-BRYOPHYTE SAMPLES, MEDFRA QUADRANGLE, ALASKA

BY H. D. King, E. F. Cooley, A. L. Gruzensky, and D. L. Spiesman, Jr.

1983