

STRUCTURE CONTOUR MAP, TOP HEMLOCK FORMATION, COOK INLET BASIN, ALASKA

1976

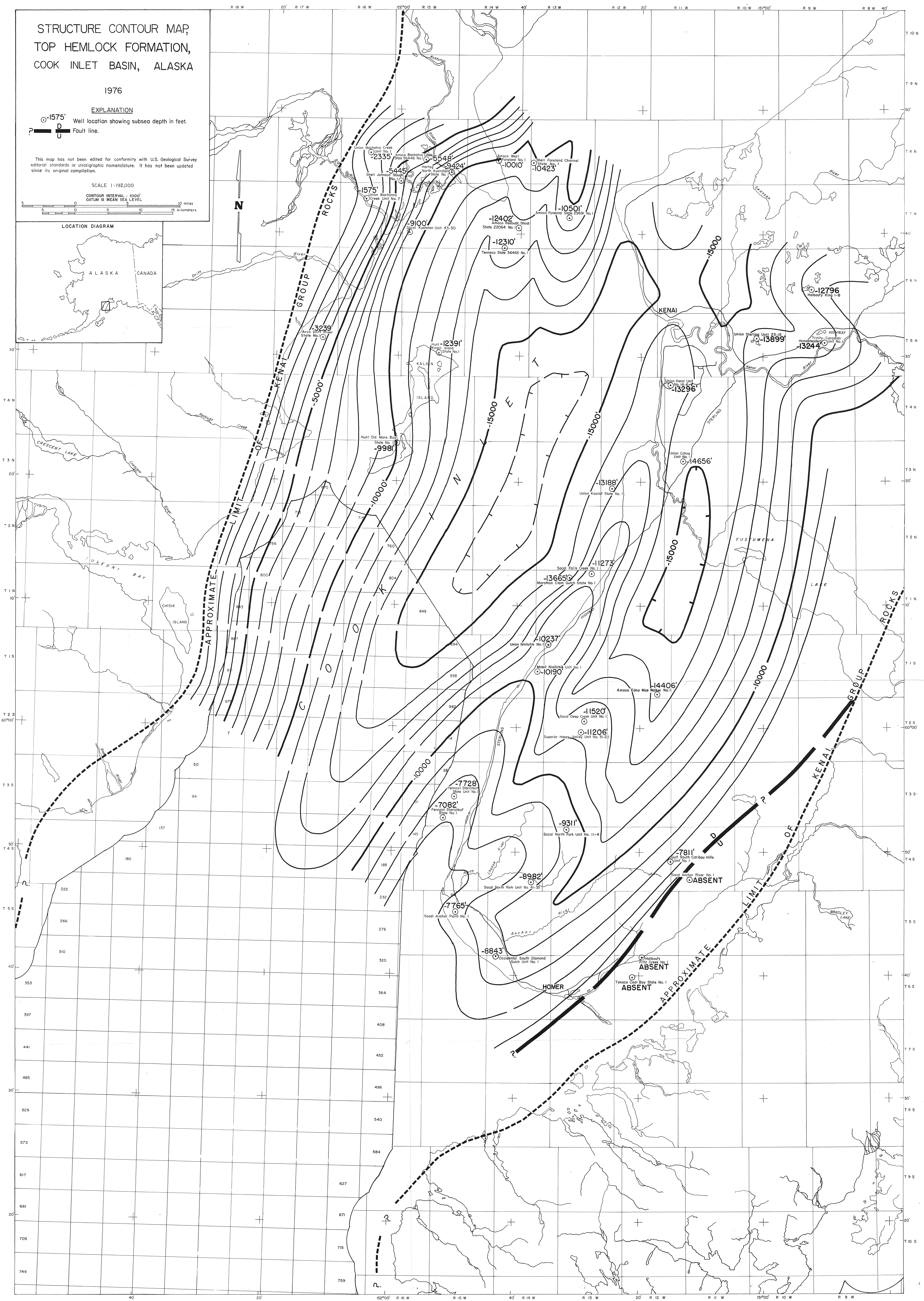
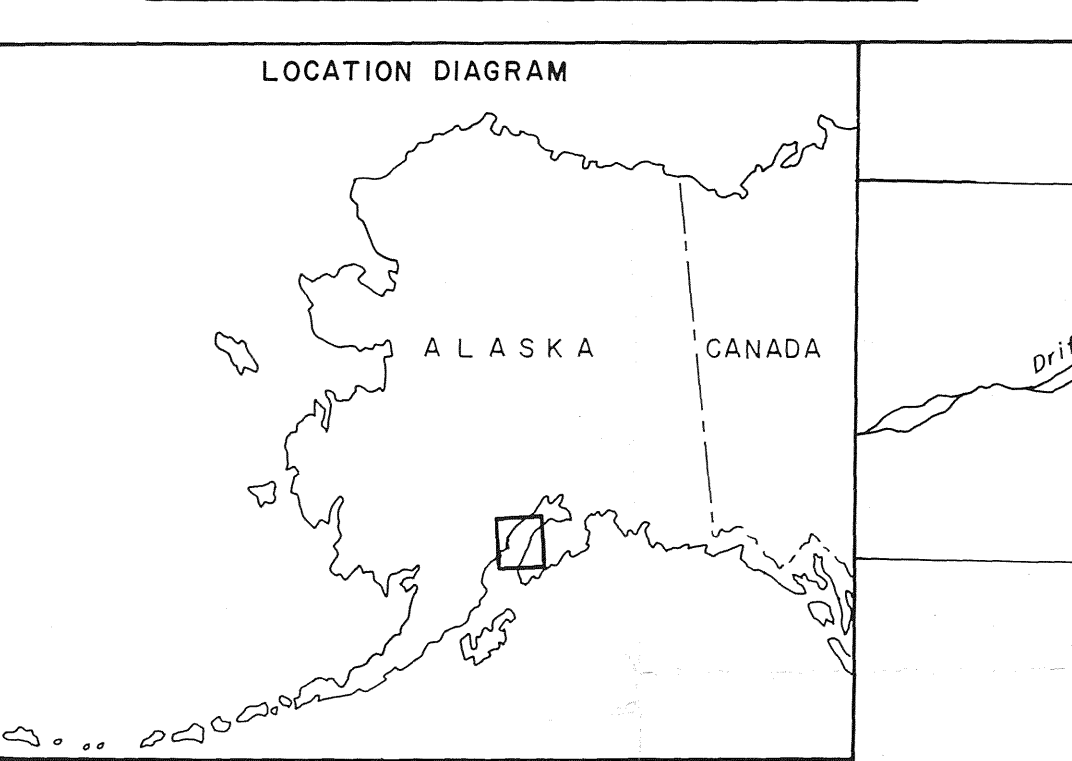
EXPLANATION

○-1575' Well location showing subsea depth in feet.
— Fault line.

This map has not been edited for conformity with U.S. Geological Survey editorial standards or stratigraphic nomenclature. It has not been updated since its original compilation.

SCALE 1:192,000

CONTOUR INTERVAL - 1000'
DATUM IS MEAN SEA LEVEL



Map labels include: KENAI, HOMER, KALGIN ISLAND, TUSUMENA LAKE, BRADLEY LAKE, and various well identifiers such as 2335, 5548, 9424, 1000, 10423, 12402, 10501, 12310, 15000, 12796, 13899, 13244, 13296, 14656, 13188, 11273, 13665, 10237, 10190, 14406, 11520, 11206, 7728, 7082, 9311, 8982, 7811, 7765, 8843, 7811, and ABSENT. Contour lines are labeled with values like 5000, 10000, 15000, and 20000. Fault lines are labeled 'APPROXIMATE LIMIT OF KENAI GROUP ROCKS' and 'APPROXIMATE LIMIT OF HOMER'. A north arrow is located in the upper left quadrant.