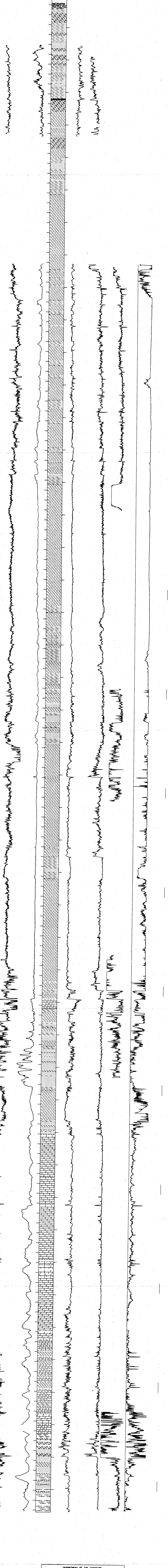


# ITKILLIK RIVER UNIT NO. 1

API #50-103-20003  
 SEC 10 T 8N R 5E  
 TD 15321 FT., KB 63 FT.



DEPARTMENT OF THE INTERIOR U.S. GEOLOGICAL SURVEY OFFICE OF THE NATIONAL PETROLEUM RESERVE IN ALASKA			
LOCATION: NPRA			
ITKILLIK RIVER UNIT No. 1 BOREHOLE CORR. GAWA RAY			
AUTHOR: K. BIRD	DATE: 8-24-81		
DRUM: 63 ASL	SCALE: 1IN=200FT	TSP NO. PI-341	
DRAWN BY: EXPLORATION TECHNOLOGY		DRAW NO.	