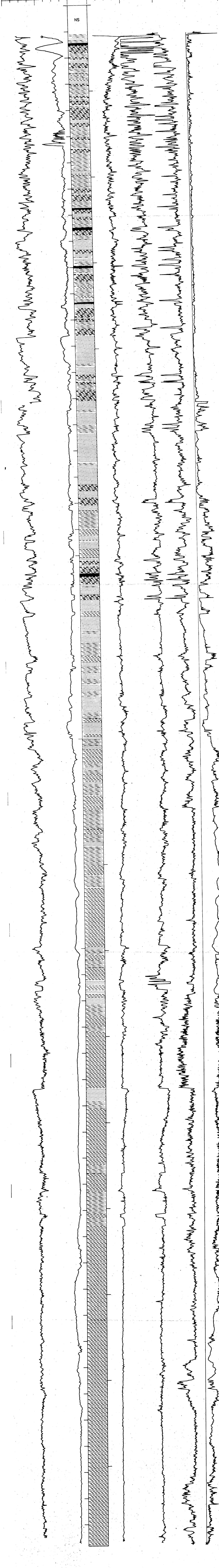


KOLUKTAK NO. 1

API #50-119-20001
 SEC 27 TWP 5N RGE 11W
 TD 5883 FT., KB 205 FT.



DEPARTMENT OF THE INTERIOR U.S. GEOLOGICAL SURVEY OFFICE OF THE NATIONAL PETROLEUM RESERVE IN ALASKA			
LOCATION: NPRA			
KOLUKTAK NO. 1 BOREHOLE CORR. BANNA RAY			
AUTHOR: K. BIRD	DATE: 01-14-82		
DATUM: 205 ASL	SCALE: 1 IN = 100 FT	TSP NO. PI-172	
DRAWN BY: EXPLORATION TECHNOLOGY		DRAW NO.	