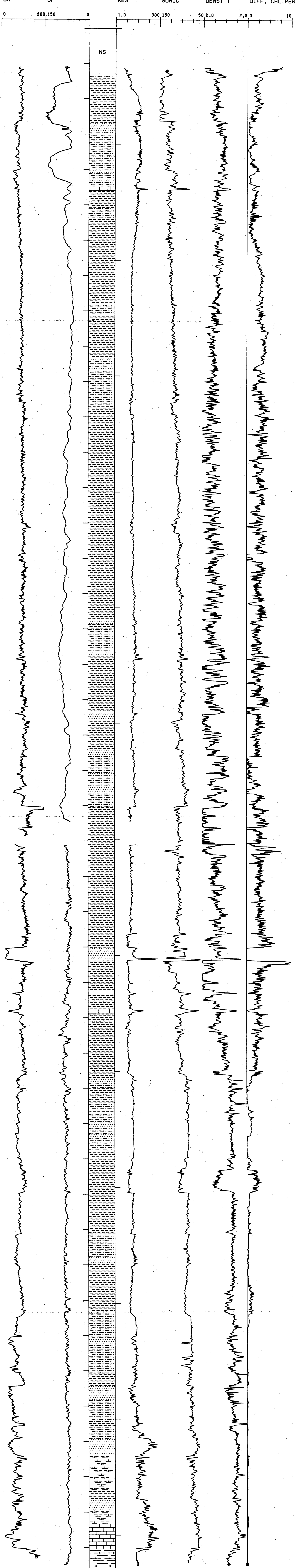


WALAKPA NO. 2

API #50-023-20019

SEC 31 T 20N R 19W

TD 4360 FT., KB 61 FT.



DEPARTMENT OF THE INTERIOR U.S. GEOLOGICAL SURVEY OFFICE OF THE NATIONAL PETROLEUM RESERVE IN ALASKA			
LOCATION: NPRA			
WALAKPA NO. 2 BOREHOLE CORR. GAMMA RAY			
AUTHOR: K. BIRD	DATE: 8-05-81		
DATUM: 61 ASL	SCALE: 1IN=100FT	TSP NO. PI-323	
DRWG BY: EXPLORATION TECHNOLOGY		DRWG NO.	