

DRILL HOLE: USGS A-84-1, Tikishla Park, Anchorage, Alaska

LOCATION: NE1/4 NE1/4 SW1/4, sec. 21, T. 13N.,
R. 3W., Seward Meridian

ALTITUDE: 115 ft (35 m)

CALIPER
LOG

TEMPERATURE
LOG

ELECTRIC
LOG

RADIATION
LOGS

SINGLE-POINT
RESISTANCE

NATURAL GAMMA

GAMMA-GAMMA

NEUTRON

Logging speed: 10 ft/min.
(3.3 m/min.), up

Logging speed: 15 ft/min.
(4.6 m/min.), down

Logging speed: 15 ft/min.
(4.6 m/min.), up

Logging speed: 15 ft/min.
(4.6 m/min.), up

Logging speed: 15 ft/min.
(4.6 m/min.), up

Logging speed: 15 ft/min.
(4.6 m/min.), up

Source and spacing: 5 millirad
¹³⁷Cs 11.8 in. (30.0 cm)

← Increasing bulk density
← Increasing ¹³⁷Cs concentration
← Increasing ²⁴¹Am and ²⁴¹Be 16.0 in. (40.6 cm)

← Increasing ¹³⁷Cs concentration
← Increasing ²⁴¹Am and ²⁴¹Be 16.0 in. (40.6 cm)

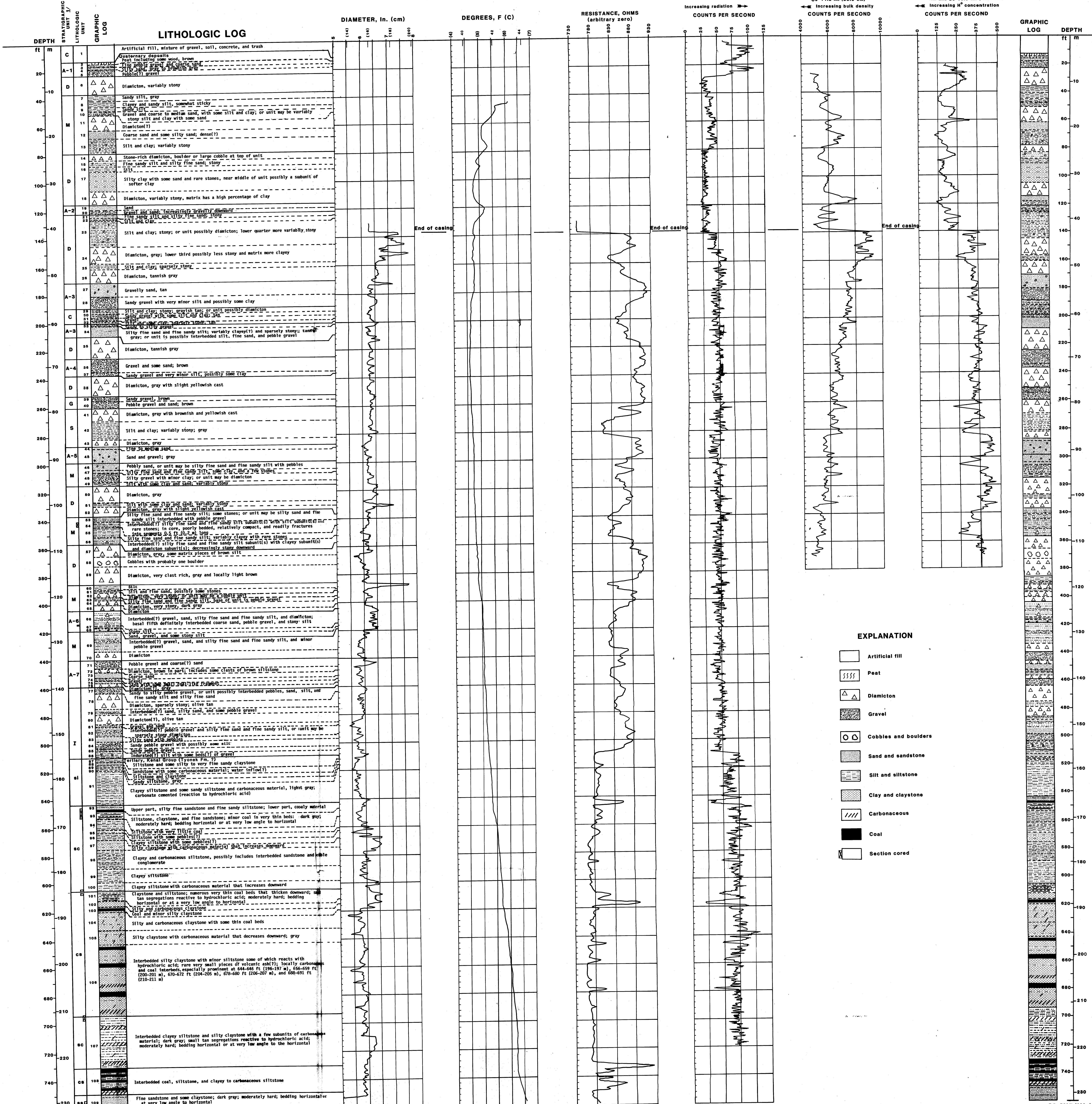


PLATE 1.--LITHOLOGIC LOG AND COMPOSITE OF GEOPHYSICAL LOGS FOR
DRILL HOLE USGS A-84-1, TIKISHLA PARK, ANCHORAGE, ALASKA

By
Lynn A. Yehle, Jack K. Odum, Henry R. Schmoll, and Larry L. Dearborn