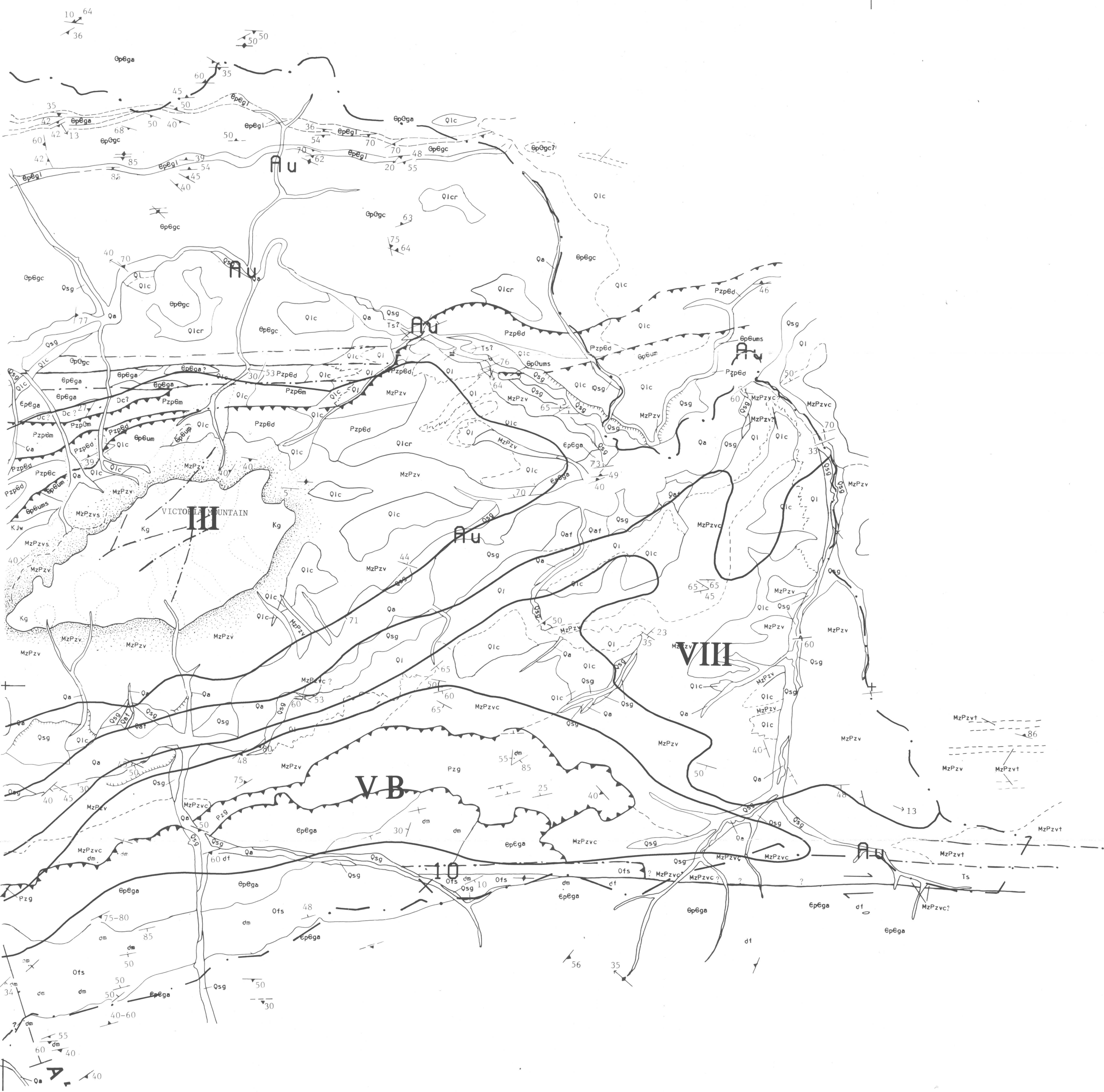
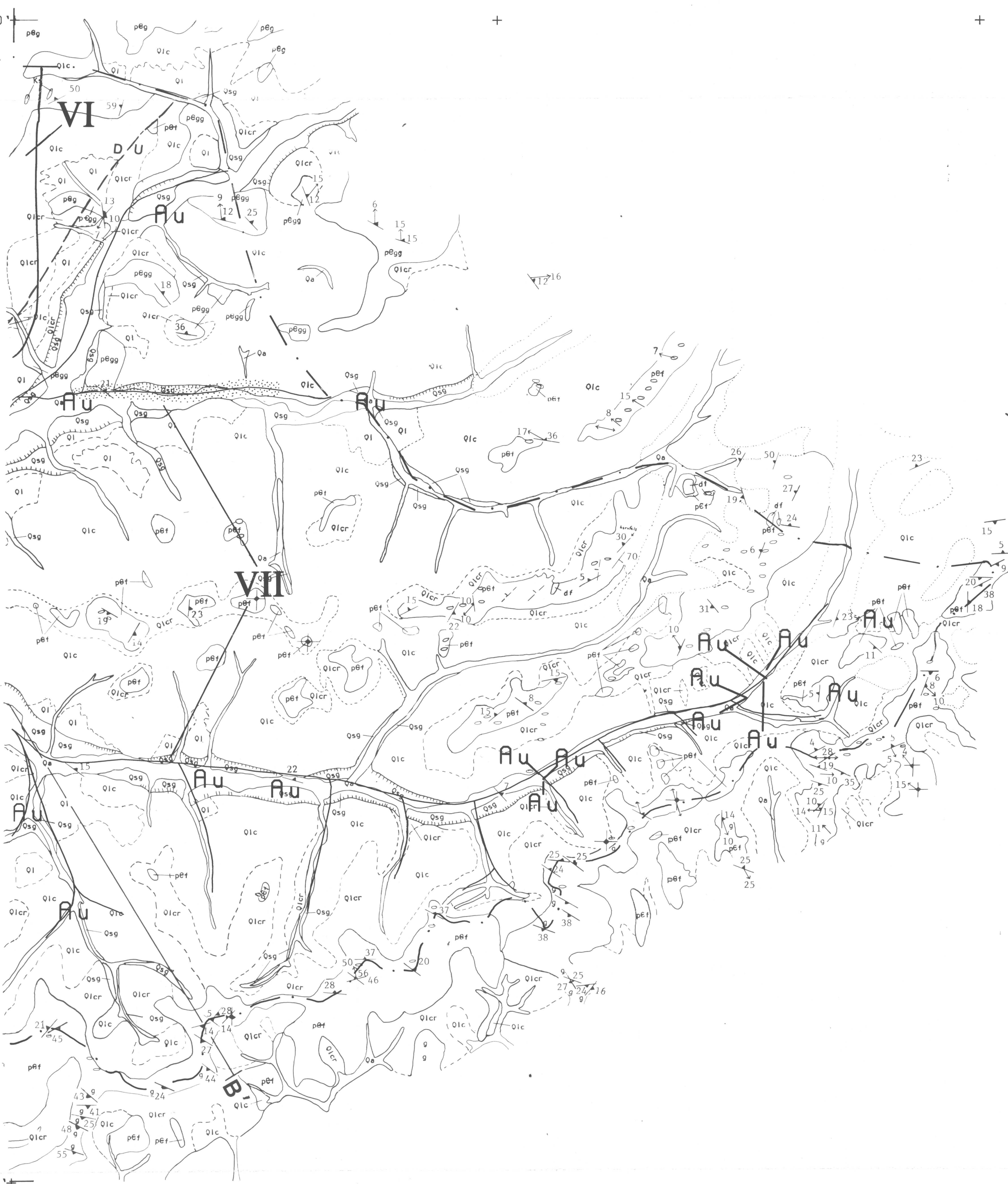


65°55' 147° 146°45' 146°30' 146°20' 65°55'



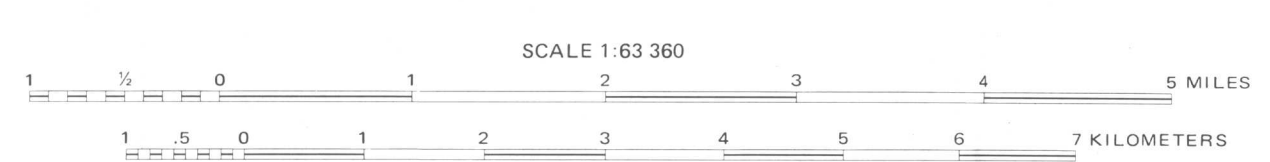
**MINERAL RESOURCE SYMBOLS**

- 8** Significant mineral occurrence. Numbers refer to occurrences described in Table V-1.
- Au** Gold occurrence
- +** High-calcium limestone sample location
- Placer claims
- Prospective placer deposits
- Prospective tracts for mineral deposits. Roman numeral identifies tract described in the text.



**MINERAL RESOURCES MAP**

By  
Richard B. McCammon, C. Dean Rinehart, and Thomas D. Light  
1987



**MINERAL RESOURCE ASSESSMENT FOR PART OF THE  
WHITE MOUNTAINS NATIONAL RECREATION AREA, ALASKA**

This map is preliminary and has not been reviewed for conformity with U.S. Geological Survey editorial standards and stratigraphic nomenclature.

65°10' 147° 146°45' 146°30' 146°20' 65°10'