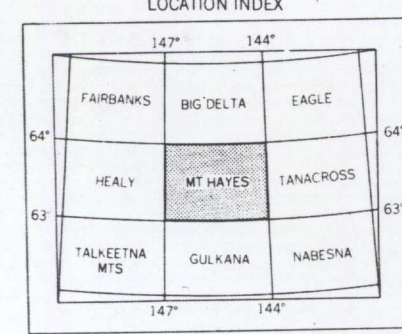
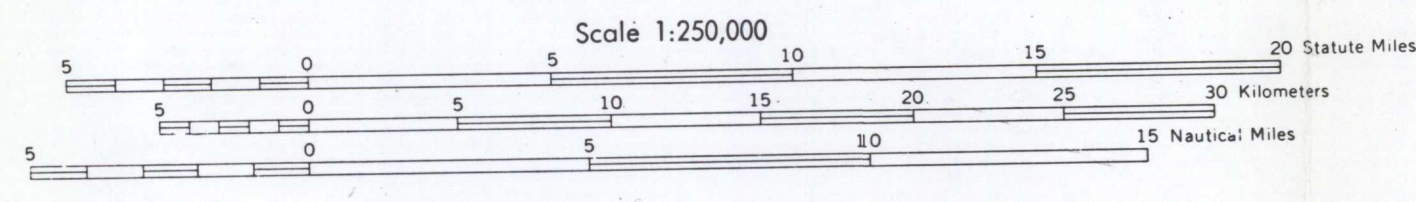
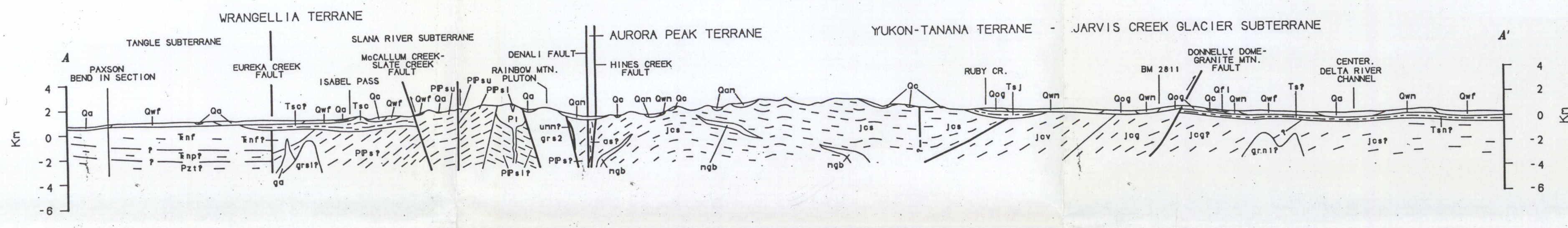




Base from U.S. Geological Survey 1:250,000 topographic series: Mount Hayes, 1950, ALASKA-CANADA, Universal Transverse Mercator projection



GEOLOGIC CREDIT NOTES
Geology mapped by R.B.D. Abert, 1978; J.M. Ableson, 1985; G.C. Bond, 1982-84, 1986-73; P.E. Brown, 1978; Van Lape, 1978-81, 1982-87; Ronny T. Miyaoka, 1978-81; R.B. Nelson, 1979; W.J. Rindfleisch, 1978-81; Donald H. Richter, 1986-87, 1972-74, 1979; C.E. Schwab, 1980-82; T.E. Smith, 1994, 1998; T.L. E. Wood, 1964, 1971, 1975; Wayne Tomko, 1979-80; R.E. Zehner, 1978-81.

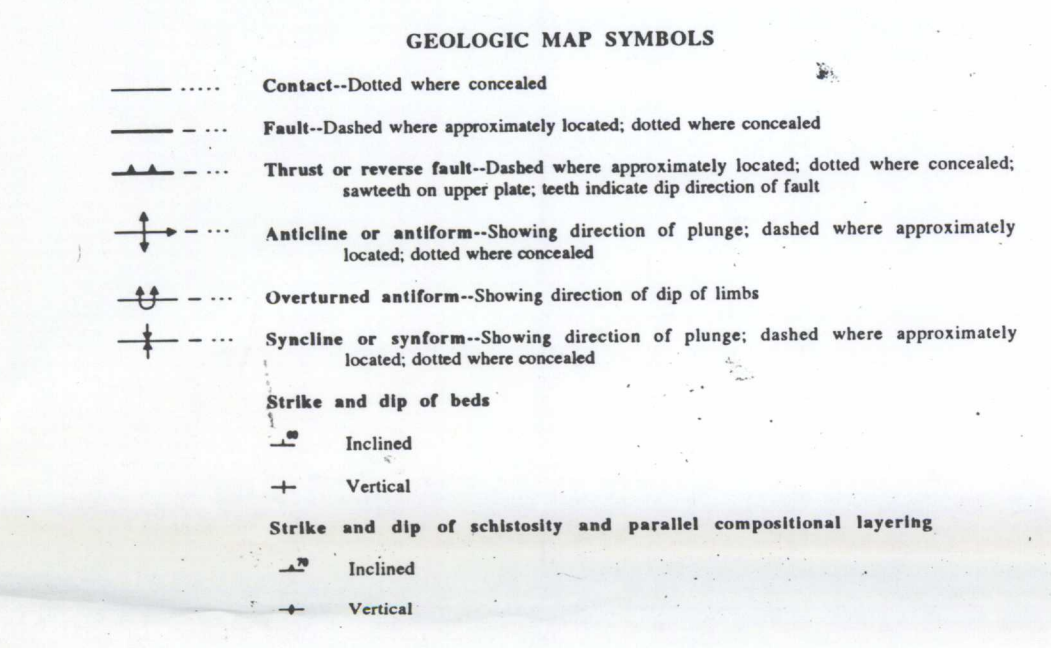
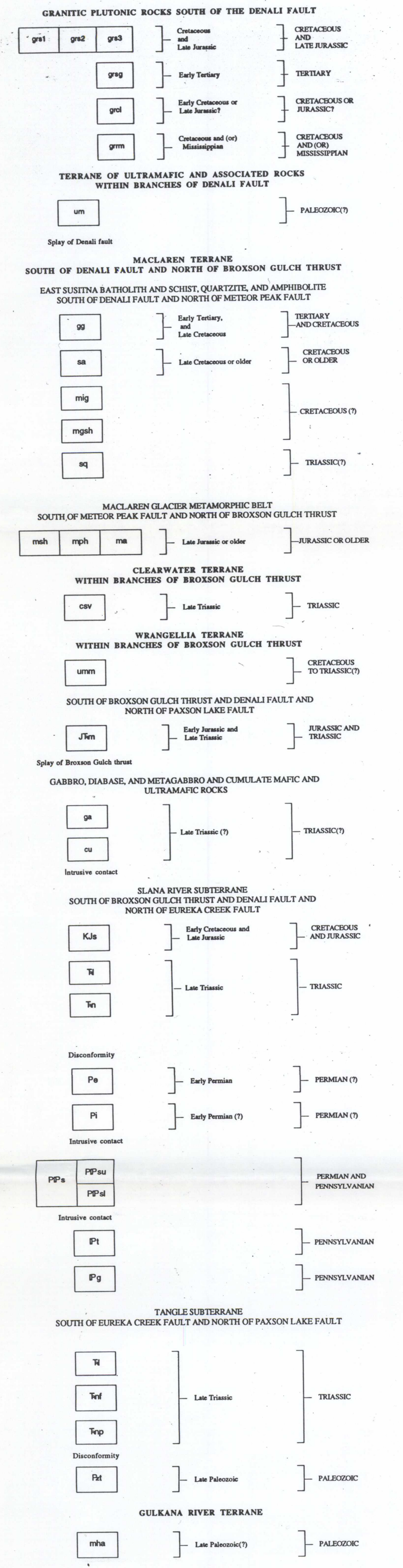
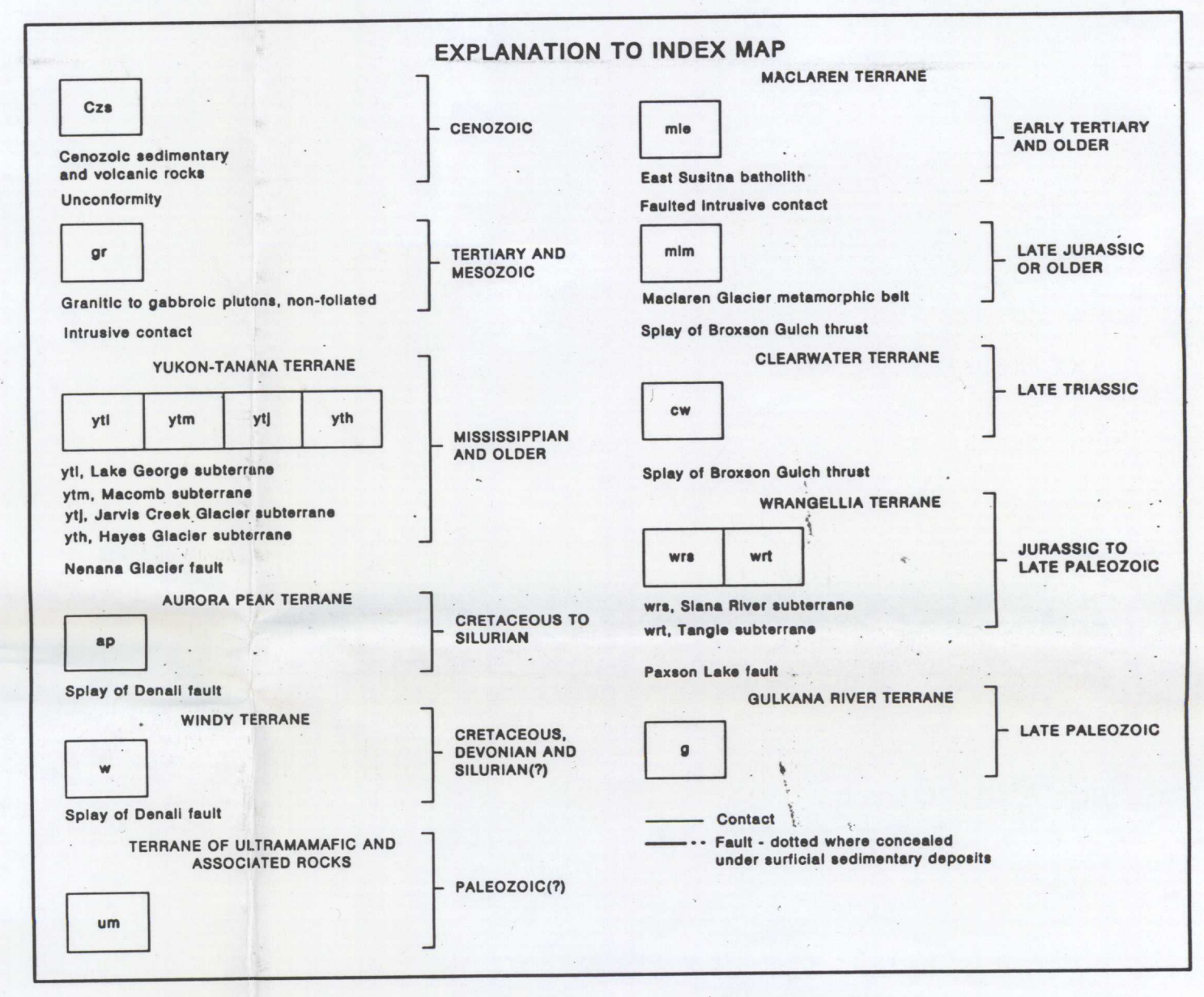
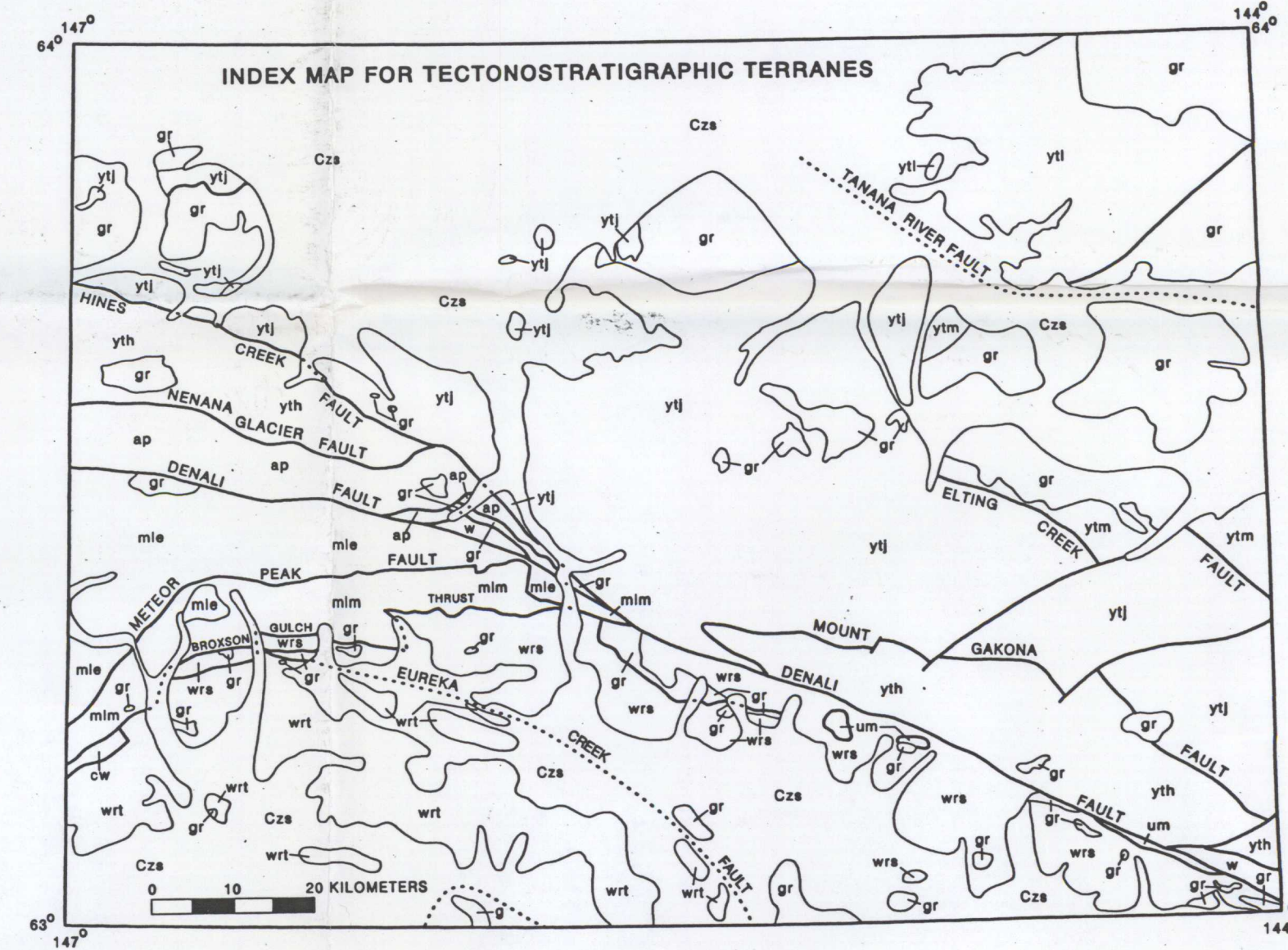
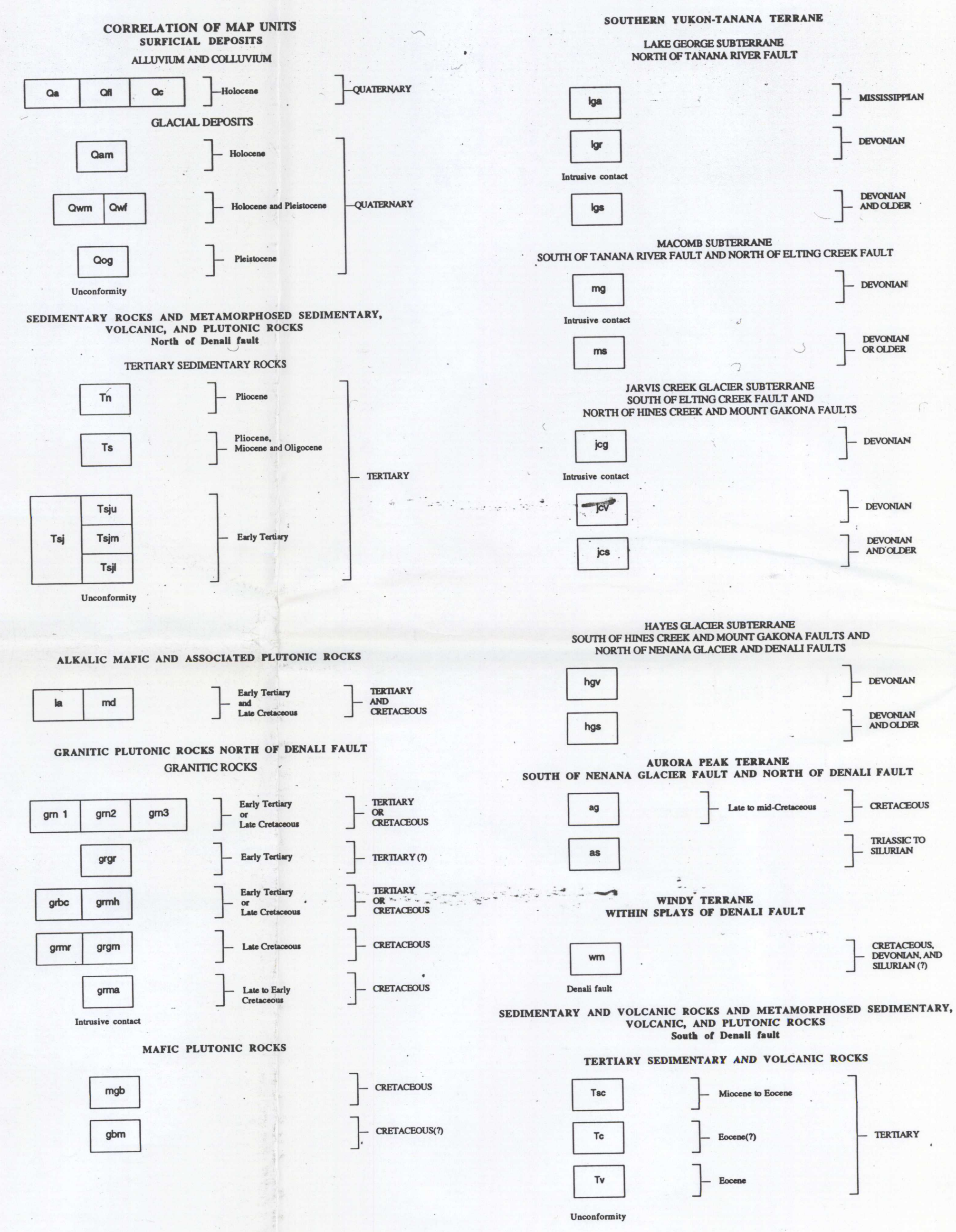


PRELIMINARY GEOLOGIC MAP OF THE MOUNT HAYES QUADRANGLE, EASTERN ALASKA RANGE, ALASKA

By
Warren J. Nogleberg¹, John N. Aleinikoff², Ian M. Lange³,
Steven R. Silva¹, Ronny T. Miyaoka⁴, Carl E. Schwab¹, and Richard E. Zehner¹
With contributions for selected areas from
Gerard C. Bond⁵, Donald H. Richter⁴, Thomas E. Smith⁶, and James H. Stout⁷

1992

¹ U.S. Geological Survey, Menlo Park, California. ² U.S. Geological Survey, Denver, Colorado. ³ U.S. Geological Survey, Anchorage, Alaska and Department of Geology, University of Montana, Missoula, Montana. ⁴ U.S. Geological Survey, Anchorage, Alaska. ⁵ Lamont-Doherty Geological Observatory, Palisades, New York. ⁶ Alaska Division of Geological and Geophysical Survey, Fairbanks, Alaska. ⁷ University of Minnesota, Minnesota.



This report is preliminary and has not been reviewed for conformity with U.S. Geological Survey editorial standards or with the North American Stratigraphic Code. Any use of trade, product, or firm names is for descriptive purposes only and does not imply endorsement by the U.S. Government.