

UNIVERSITY OF ALASKA LIBRARY
FAIRBANKS, ALASKA

UNITED STATES DEPARTMENT OF THE INTERIOR
GEOLOGICAL SURVEY

METALLIC MINERAL RESOURCES MAP OF THE RUSSIAN MISSION QUADRANGLE, ALASKA

Compiled by

Joseph M. Hoare and Edward H. Cobb

Open-file map

1970

REC'D. COLLEGE

JUL 28 1970

DIV. MINES & GEOLOGY

This map is preliminary
and has not been edited or
reviewed for conformity with
Geological Survey standards
or nomenclature.

LODE DEPOSITS

<u>Number</u>	<u>Name and principal reference(s)</u>	<u>Commodity</u> <u>1/</u>
1	Arnold: Harrington, 1918, p. 63-64; Smith, 1942a, p. 198-199; West, 1954, p. 8-9	Cu, Au, Pb, Mo, W
2	Edgar Creek: Harrington, 1918, p. 63	Au
3	Black Mountain: Ebbley and Wright, 1948, p. 40	Sb
4	Brink (Owhat River): Cady and others, 1955, p. 122	Mo
5	Mission Creek (Konechney): Cady and others, 1955, p. 122; West, 1954, p. 5-7	Cu, FM, Au, Pb, Ag, W
6	Cobalt Creek (February): Cady and others, 1955, p. 121-122; West, 1954, p. 5-7	Cu, Au, Pb, Ag, Sn, Zn
<u>1/</u> Symbols - Sb, antimony; Cu, copper; FM, fissionable material (other than monazite); Au, gold; Pb, lead; Mo, molybdenum; Ag, silver; Sn, tin; W, tungsten; Zn, zinc.		

PLAGER DEPOSITS

<u>Number</u>	<u>Name and principal reference(s)</u>	<u>Commodity</u> <u>1/</u> , <u>2/</u>
7	Willow Creek: Harrington, 1918, p. 60-62; Hoare and Coonrad, 1959	Au, Pt, Ag
8	Disappointment Creek: Harrington, 1918, p. 59 Wilson Creek: Harrington, 1918, p. 59; Hoare and Coonrad, 1959	Au, Pt Au, Pt
9	Elephant Creek: Harrington, 1918; Joesting, 1942, p. 40; Hoare and Coonrad, 1959	Au, W
10	Buster Creek: Smith, 1934, p. 43	Au
11-13	Montezuma Creek: Smith, 1934, p. 43; Hoare and Coonrad, 1959	Au
<u>1/</u> Symbols - Au, gold; Pt, platinum-group metals; Ag, silver; W, tungsten.		
<u>2/</u> Gold has been mined from most of the listed placers.		

<u>Number</u>	<u>Name and principal reference(s)</u>	<u>Commodity</u> <u>1/</u> , <u>2/</u>
14	Bobtail Creek: Smith, 1942b, p. 44; Joesting, 1942, p. 27; Hoare and Coonrad, 1959	Au, Hg
15	Bogus Creek: Maddren, 1915, p. 331-332	Au
16	Ophir Creek: Maddren, 1915, p. 332-336	Au
17	California Creek: Hoare and Coonrad, 1959 Rock (Rocky) Creek: Alaska Div. Mines and Minerals, 1960, p. 77 Tuluksak River: Maddren, 1915, p. 331; Alaska Div. Mines and Minerals, 1960, p. 77	Au, Ag Au Au
18	Tiny Gulch: Maddren, 1915, p. 328-329	Au
19	Spruce Creek: Maddren, 1915, p. 311-312, 321-322	Au
20	Bear Creek: Maddren, 1915, p. 309-321, 328-330; Hoare and Coonrad, 1959; Mertie, 1969, p. 89-90 Bonanza Creek: Maddren, 1915, p. 311-312, 327-329	Au, Hg, Pt Au

Placer deposits not shown on map because occurrences could not be located closely enough to plot:

Bering Alaska Placers: Smith, 1939, p. 61	Au
Happy Creek: Brooks, 1915, p. 66	Au
Mission Creek: West, 1954, p. 6	Au

1/ Symbols - Au, gold; Hg, mercury; Pt, platinum-group metals; Ag, silver.

2/ Gold has been produced from most of the listed placers.

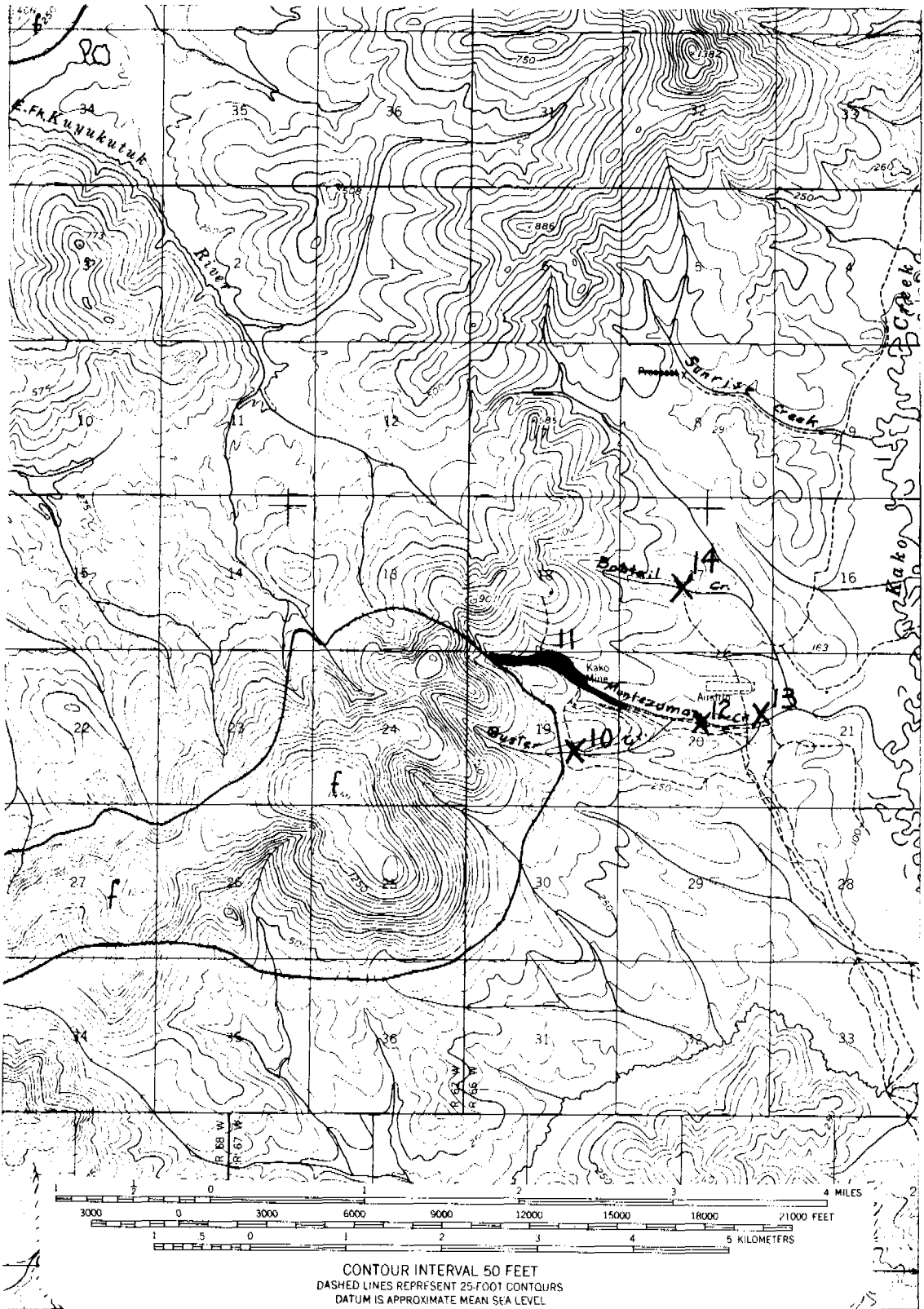
REFERENCES

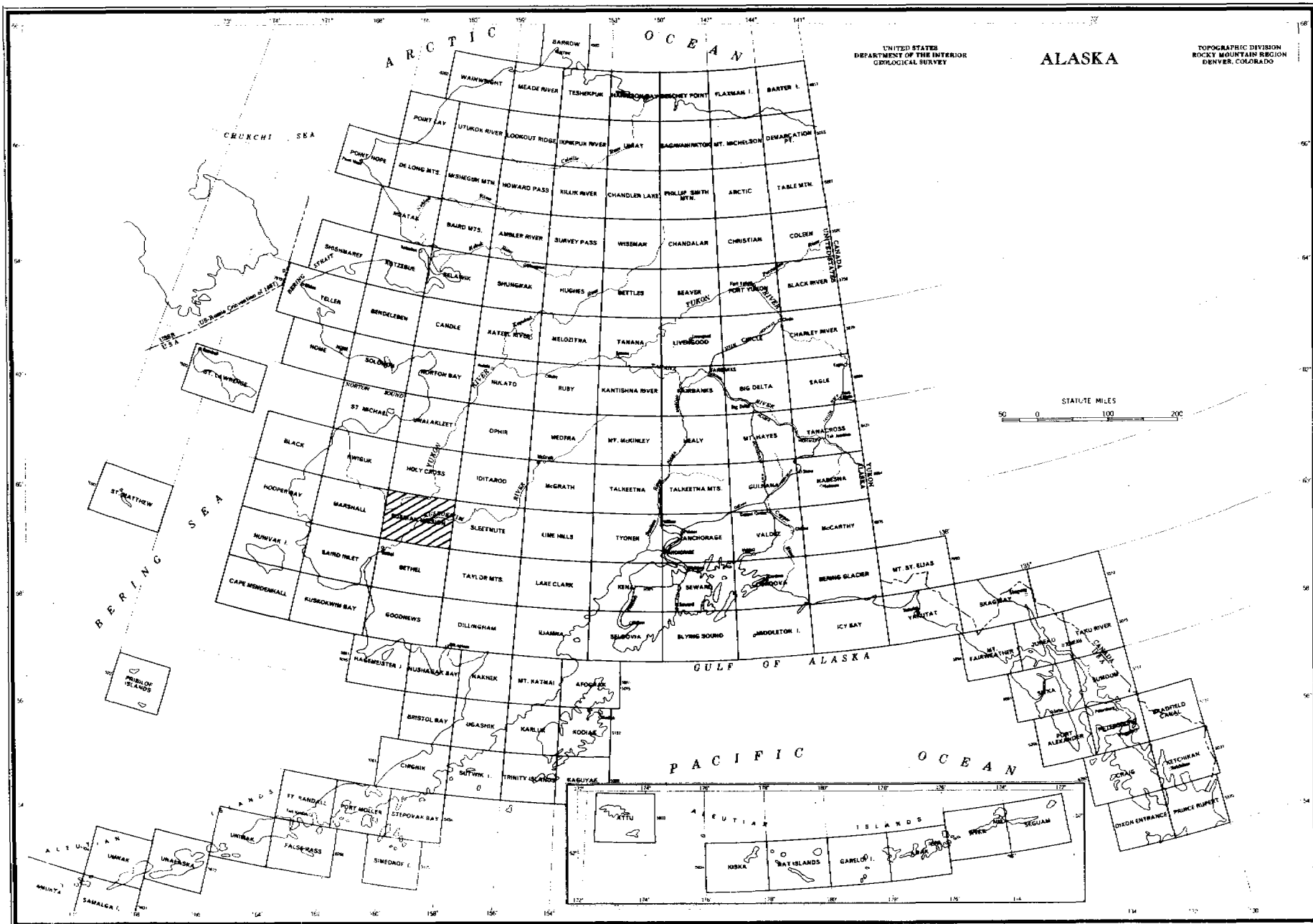
- Alaska Div. Mines and Minerals, 1960, Rept. for year 1960, 88 p.
 Brooks, A. H., 1915, The Alaskan mining industry in 1914: U.S. Geol. Survey Bull. 622, p. 15-68.
 Cady, W. M., Wallace, R. E., Hoare, J. M., and Webber, E. J., 1955, The central Kuskokwim region, Alaska: U.S. Geol. Survey Prof. Paper 268, 132 p.
 Ebbley, Norman, Jr., and Wright, W. S., 1948, Antimony deposits in Alaska: U.S. Bur. Mines Rept. Inv. 4173, 41 p.
 Harrington, G. L., 1918, The Anvik-Andreafski region, Alaska (including the Marshall district): U.S. Geol. Survey Bull. 683, 70 p.
 Hoare, J. M., and Coonrad, W. L., 1959, Geology of the Russian Mission quadrangle, Alaska: U.S. Geol. Survey Misc. Geol. Inv. Map I-292.
 Joesting, H. R., 1942, Strategic mineral occurrences in interior Alaska: Alaska Dept. Mines Pamph. 1, 46 p.

- Maddren, A. G., 1915, Gold placers of the lower Kuskokwim, with a note on copper in the Russian Mountains: U.S. Geol. Survey Bull. 622, p. 292-360.
- Mertie, J. B., Jr., 1969, Economic geology of the platinum minerals: U.S. Geol. Survey Prof. Paper 630, 120 p.
- Smith, P. S., 1934, Mineral industry of Alaska in 1933: U.S. Geol. Survey Bull. 864-A, p. 1-94.
- _____, 1939, Mineral industry of Alaska in 1937: U.S. Geol. Survey Bull. 910-A, p. 1-113.
- _____, 1942a, Occurrences of molybdenum minerals in Alaska: U.S. Geol. Survey Bull. 926-C, p. 161-207.
- _____, 1942b, Mineral industry of Alaska in 1940: U.S. Geol. Survey Bull. 933-A, p. 1-102.
- West, W. S., 1954, Reconnaissance for radioactive deposits in the lower Yukon-Kuskokwim region, Alaska, 1952: U.S. Geol. Survey Circ. 328, 10 p.

SOURCE OF DATA ON DISTRIBUTION OF INTRUSIVE ROCKS

- Hoare, J. M., 1970, unpub. compilation.





Index map showing location of Russian Mission quadrangle.