

LOCATION MAPS AND LIST OF U.S. GEOLOGICAL SURVEY REPORTS ON WATER RESOURCES IN ALASKA 1950 TO 1990

Compiled by Elisabeth F. Snyder

U.S. GEOLOGICAL SURVEY
Open-File Report 91-60

(Supersedes Open-File Report 88-344)



Anchorage, Alaska
1991

U.S. DEPARTMENT OF THE INTERIOR

MANUEL LUJAN, JR., Secretary

U.S. GEOLOGICAL SURVEY

Dallas L. Peck, Director

**For additional information
write to:**

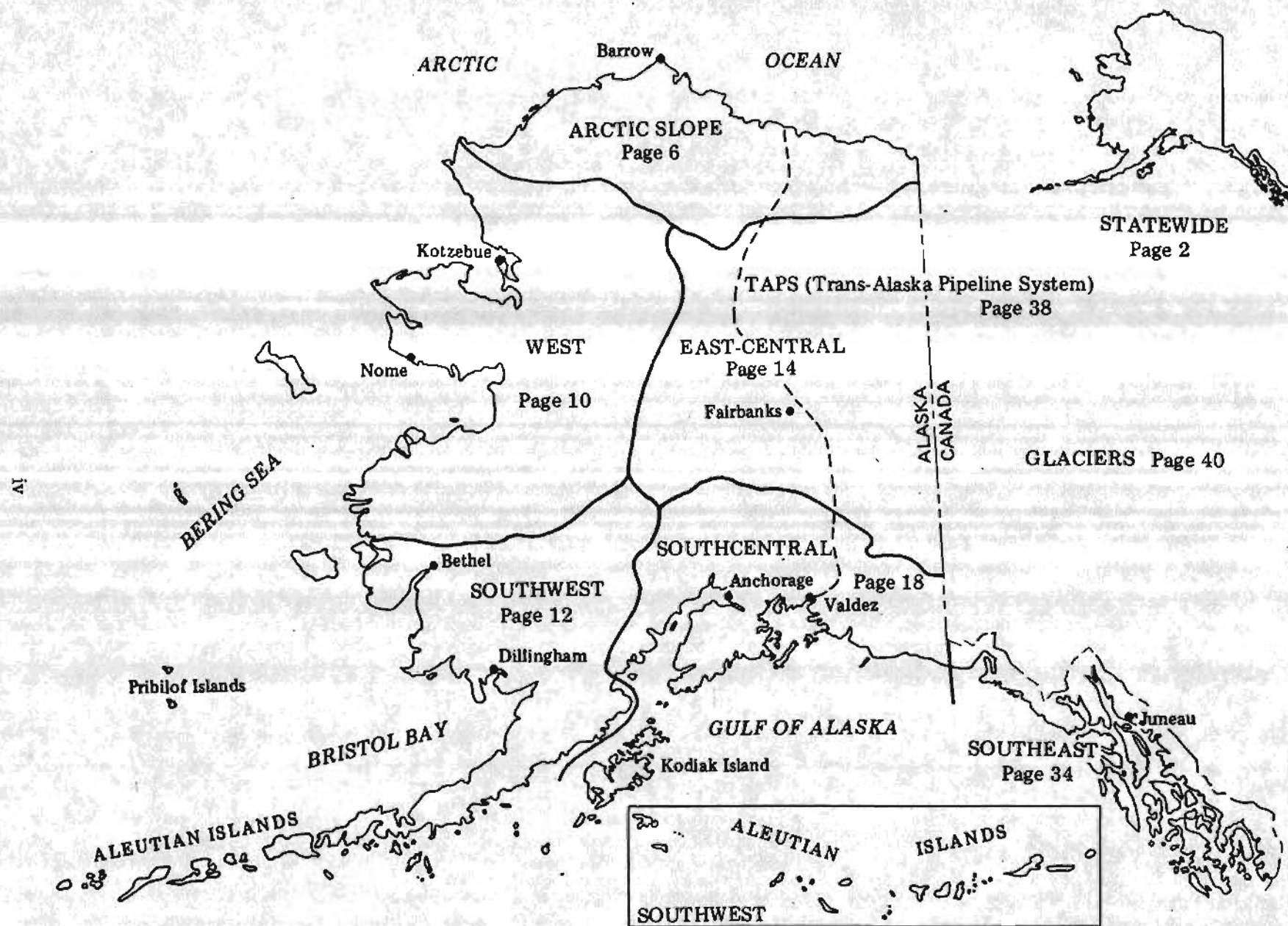
**District Chief
U.S. Geological Survey
4230 University Drive, Suite 201
Anchorage, Alaska 99508-4664**

**Copies of this report can be
purchased from:**

**U.S. Geological Survey
Books and Open-File Reports Section
Federal Center, Bldg. 810
Box 25425
Denver, Colorado 80225**

CONTENTS

	Page
INTRODUCTION	1
STATEWIDE REPORTS	2
Water resources and supply.	2
Surface water.	2
Ground water.	3
Permafrost and snow	4
Water resources data reports	4
Bibliographies	5
ARCTIC SLOPE REPORTS	7
WEST REPORTS	11
SOUTHWEST REPORTS	13
EAST-CENTRAL REPORTS	15
Fairbanks area.	15
Tanana River basin.	17
Healy area	17
SOUTHCENTRAL REPORTS	19
Matanuska-Susitna Borough	21
Point MacKenzie.	21
Big Lake.	22
Susitna River	22
Copper River area.	23
Cordova	23
Municipality of Anchorage.	25
Eklutna to Eagle River.	25
Anchorage Bowl	26
General hydrology and water quality.	26
Surface water	26
Ground water	27
Potter to Portage	28
Kenai Peninsula Borough.	31
Kenai-Soldotna area	31
Seward area	31
Homer area.	32
Kodiak Island.	32
SOUTHEAST REPORTS	35
Juneau area.	36
TRANS-ALASKA PIPELINE SYSTEM (TAPS) REPORTS	39
GLACIER REPORTS	41
Statewide.	41
Columbia Glacier.	41
Gulkana and Wolverine Glaciers	43
Knik Glacier	43
Hubbard Glacier.	43
Other glaciers	44



Index to location maps.

LOCATION MAPS AND LIST OF U.S. GEOLOGICAL SURVEY REPORTS ON WATER RESOURCES IN ALASKA 1950 TO 1990

Compiled by Elisabeth F. Snyder

INTRODUCTION

The objective of this compilation is to provide a listing of water-resources reports in Alaska by location. For the purposes of this report, Alaska has been divided into six geographic sections: Arctic Slope, West, Southwest, East-Central, Southcentral, and Southeast (see index to location maps on facing page). The numbers on the location maps refer to the bibliographic citations. In addition, reports are cited in the following categories: Statewide, Trans-Alaska Pipeline System, and Glaciers. The Statewide reports are not located on maps. (Gaps have been left in the numbering system for additional citations in future editions of this compilation.)

Reports cited were written mainly by authors of the Water Resources Division, Alaska District. Included are selected reports published between 1950 and 1970, and all reports published by the Water Resources Division from 1971 to January 1991. A few of the reports were published by other Geological Survey divisions. Selected journal articles and papers published in conference proceedings are also included. This report supersedes U.S. Geological Survey Open-File Report 88-344, published in 1988.

STATEWIDE REPORTS

Water Resources and Supply

- Balding, G.O., 1976, Water availability, quality, and use in Alaska: U.S. Geological Survey Open-File Report 76-513, 236 p.
- Dearborn, L.L., 1981, Potential and developed water-supply sources in Alaska: Alaska Geological Society Journal, v. 1, p. 1-11.
- Feulner, A.J., Childers, J.M., and Norman, V.W., 1971, Water resources of Alaska: U.S. Geological Survey open-file report, 60 p.
- Marcher, M.V., 1965, A summary of water-supply problems in Alaska, *in* Proceedings of the 15th Alaskan Science Conference, College: Science Alaska, p. 375-379.
- Patrick, L.D., 1984, Is a water-use information program useful to Alaska? *in* "Alaska's water—a critical resource," Proceedings, Alaska Section, American Water Resources Association: Institute of Water Resources, University of Alaska, Fairbanks, Report IWR-106, p. 214-218.

Surface Water

- Berwick, V.K., Childers, J.M., and Kuentzel, M.A., 1964, Magnitude and frequency of floods in Alaska south of the Yukon River: U.S. Geological Survey Circular 493, 15 p. [1965].
- Childers, J.M., 1970, Flood frequency in Alaska: U.S. Geological Survey open-file report, 30 p.
- _____, 1970, A proposed streamflow-data program for Alaska: U.S. Geological Survey open-file report, 55 p.
- _____, 1978, River floods in northern Alaska, *in* Volume 1, Proceedings, Conference on Applied Techniques for Cold Environments, Cold Regions Specialty Conference, Anchorage, May 17-19, 1978: American Society of Civil Engineers, p. 1-12.
- Jones, S.H., 1983, Floods from small drainage basins in Alaska: U.S. Geological Survey Open-File Report 83-258, 60 p.
- Lamke, R.D., 1978, Flood characteristics of Alaskan streams: U.S. Geological Survey Water-Resources Investigations 78-129, 61 p.
- _____, 1984, Cost-effectiveness of the stream-gaging program in Alaska: U.S. Geological Survey Water-Resources Investigations Report 84-4096, 100 p.
- Madison, R.J., 1981, Effects of placer mining on hydrologic systems in Alaska--status of knowledge: U.S. Geological Survey Open-File Report 81-217, 25 p.
- Norman, V.W., 1975, Scour at selected bridge sites, Alaska: U.S. Geological Survey Water-Resources Investigations 32-75, 160 p.

- Parks, Bruce, and Lamke, R.D., 1984, Estimating peak flow from channel widths in Alaska, in "Alaska's water--a critical resource," Proceedings, Alaska Section, American Water Resources Association: Institute of Water Resources, University of Alaska, Fairbanks, Report IWR-106, p. 107-122.
- Parks, Bruce, and Madison, R.J., 1985, Estimation of selected flow and water-quality characteristics of Alaskan streams: U.S. Geological Survey Water-Resources Investigations Report 84-4247, 64 p.
- Still, P.J., and Cosby, J.M., 1989, Alaska index: Streamflow, lake levels, and water-quality records to September 30, 1988: U.S. Geological Survey Open-File Report 89-269, 189 p.

Ground Water

- Brunett, J.O., 1986, Ground-water levels in Alaska, water year 1983: U.S. Geological Survey Open-File Report 86-56, 229 p.
- Cederstrom, D.J., 1952, Summary of ground-water development in Alaska: U.S. Geological Survey Circular 169, 37 p.
- Feulner, A.J., 1964, Galleries and their use for development of shallow ground-water supplies, with special reference to Alaska: U.S. Geological Survey Water-Supply Paper 1809-E, p. E1-E16.
- Madison, R.J., McElhone, T.J., and Zenone, Chester, 1988, Alaska ground-water quality: U.S. Geological Survey Open-File Report 87-712, 8 p.
- Nelson, G.L., and Munter, J.A., 1990, Ground water, in Ryan, W.L., and Crissman, R.D., eds., Cold Regions Hydrology and Hydraulics, American Society of Civil Engineers Monograph, p. 317-348.
- Still, P.J., and Brunett, J.O., 1987, Ground-water levels in Alaska, water year 1984: U.S. Geological Survey Open-File Report 87-230, 308 p.
- Waller, R.M., 1961, Summary of ground-water conditions in Alaska as they affect private water supplies: U.S. Geological Survey Hydrologic Data Report 11, 2 p.
- Zenone, Chester, and Anderson, G.S., 1978, Summary appraisal of the Nation's ground-water resources--Alaska: U.S. Geological Survey Professional Paper 813-P, 28 p. (reprinted 1981).

Statewide

Permafrost and Snow

- Cederstrom, D.J., Johnson, P.M., and Subitsky, Seymour, 1953, Occurrence and development of ground water in permafrost regions: U.S. Geological Survey Circular 275, 30 p.
- Ferrians, O.J., Jr., compiler, 1965, Permafrost map of Alaska: U.S. Geological Survey Miscellaneous Geologic Investigations Map I-445 (reprinted 1981).
- Hopkins, D.M., Karlstrom, T.N.V., and others, 1955, Permafrost and ground water in Alaska: U.S. Geological Survey Professional Paper 264-F, p. 113-146.
- Sloan, C.E., and van Everdingen, R.O., 1988, Region 28, Permafrost region, in Back, W., Rosenshein, J.S., and Seaber, P.R., eds., Hydrogeology: Boulder, Colorado, Geological Society of America, The Geology of North America, v. O-2, p. 263-270.
- Trabant, D.C., Armstrong, R.L., and McClung, D.M., 1990, Snow avalanches, in Ryan, W.L., and Crissman, R.D., eds., Cold Regions Hydrology and Hydraulics, American Society of Civil Engineers Monograph, p. 147-176.
- Trabant, D.C., and Clagett, G.P., 1990, Measurement and evaluation of snowpacks, in Ryan, W.L., and Crissman, R.D., eds., Cold Regions Hydrology and Hydraulics, American Society of Civil Engineers Monograph, p. 39-93.
- Williams, J.R., 1970, Ground water in permafrost regions of Alaska: U.S. Geological Survey Professional Paper 696, 83 p.

Water Resources Data Reports

Water resources data for Alaska were published annually by the U.S. Geological Survey from 1957-76 in Water-Supply Papers (WSP). In 1972, a series of Water-Data Reports was started, which merged all water resources data.

U.S. Geological Survey, 1957-62, Quantity and quality of surface waters of Alaska:

Through 1950	WSP 1372	1958	WSP 1570
1950-53	WSP 1466	1959	WSP 1640
1953-56	WSP 1486	1960	WSP 1720
1957	WSP 1500		

U.S. Geological Survey, 1963-72, Ground-water levels in the United States, northwestern states:

1956-60	WSP 1760
1961-65	WSP 1845
1966-70	WSP 1980

ARCTIC SLOPE REPORTS

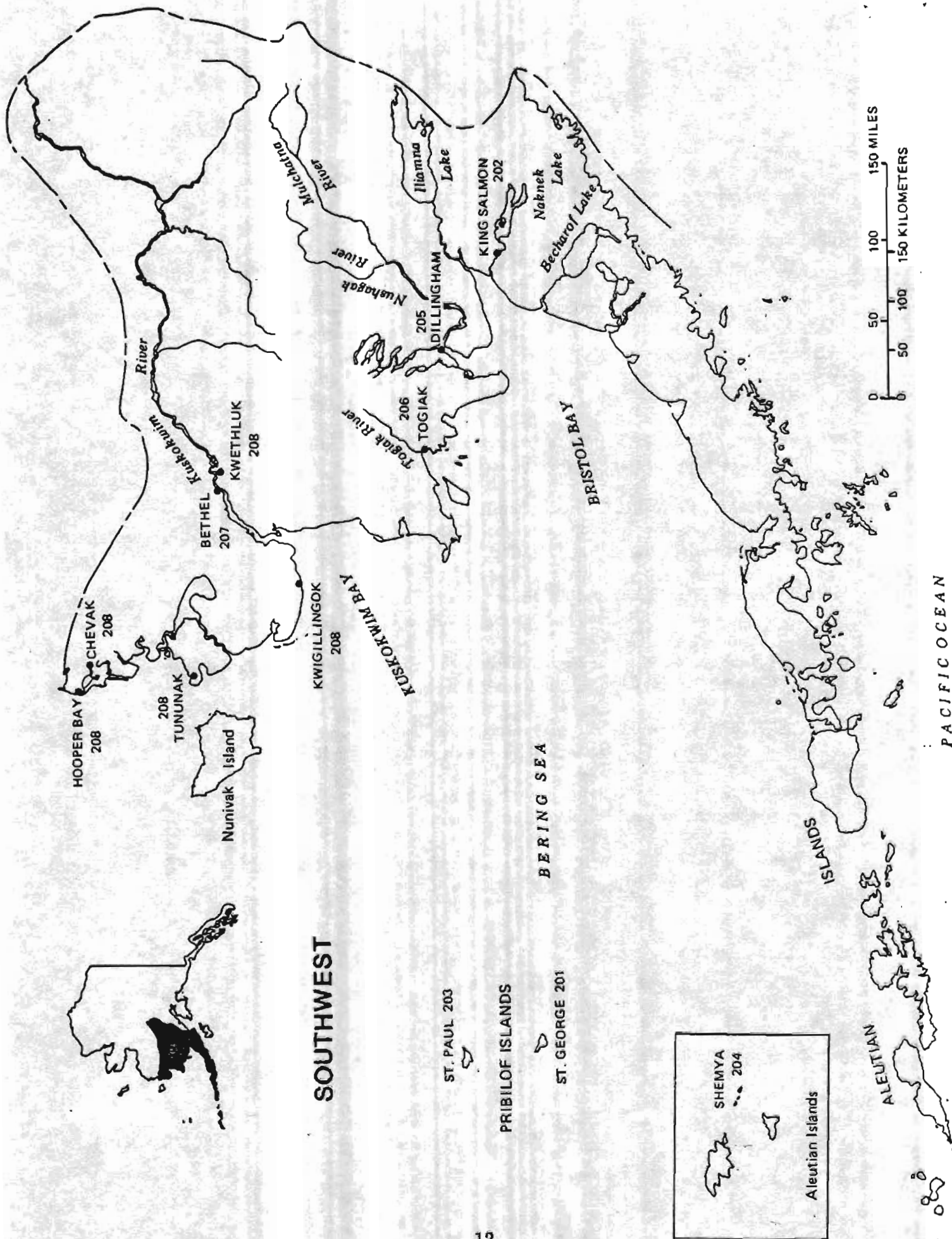
- 1 Brewer, M.C., 1958, The thermal regime of an Arctic lake: Transactions of the American Geophysical Union, v. 39, no. 2, p. 278-284.
- 2 ____ 1958, Some results of geothermal investigations of permafrost in northern Alaska: Transactions of the American Geophysical Union, v. 39, no. 1, p. 19-25.
- 3 Childers, J.M., Kernodle, D.R., and Loeffler, R.M., 1979, Hydrologic reconnaissance of western Arctic Alaska, 1976 and 1977: U.S. Geological Survey Open-File Report 79-699, 68 p.
- 4 Childers, J.M., Sloan, C.E., and Meckel, J.P., 1973, Hydrologic reconnaissance of streams and springs in eastern Brooks Range, Alaska, July 1972: U.S. Geological Survey open-file report, 25 p.
- 5 Childers, J.M., Sloan, C.E., Meckel, J.P., and Nauman, J.W., 1977, Hydrologic reconnaissance of the eastern North Slope, Alaska, 1975: U.S. Geological Survey Open-File Report 77-492, 65 p.
- 6 Glude, W.J., and Sloan, C.E., 1980, Reconnaissance snow survey of the National Petroleum Reserve, in Alaska, April-May 1979: U.S. Geological Survey Water-Resources Investigations 80-49, 13 p.
- 7 Jones, S.H., 1972, Surface-water investigations at Barrow, Alaska: U.S. Geological Survey open-file report, 16 p.
- 8 McCoy, G.A., 1983, Nutrient limitation in two Arctic lakes, Alaska: Canadian Journal of Fisheries and Aquatic Sciences, v. 40, no. 8, p. 1195-1202.
- 9 Nauman, J.W., and Kernodle, D.R., 1975, The effect of a fuel oil spill on benthic invertebrates and water quality on the Alaskan Arctic Slope: Happy Valley Creek, near Sagwon: U.S. Geological Survey Journal of Research, v. 3, no. 4, p. 495-500.
- 10 Scott, K.M., 1978, Effects of permafrost on stream channel behavior in Arctic Alaska: U.S. Geological Survey Professional Paper 1068, 19 p.
- 11 ____ 1979, Arctic stream processes—an annotated bibliography: U.S. Geological Survey Water-Supply Paper 2065, 78 p.
- 12 Sloan, C.E., 1972, Water-resources reconnaissance of Anaktuvuk Pass, Alaska: U.S. Geological Survey open-file report, 12 p.
- 13 ____ 1987, Water resources of the North Slope, Alaska, in Irv Tailleir and Paul Weimer, eds., 1987, Alaskan North Slope Geology: Pacific Section, SEPM and Alaska Geological Society, v. 50, p. 233-252.

Arctic Slope

- 14 Sloan, Charles, Trabant, Dennis, and Glude, William, 1979, Reconnaissance snow surveys of the National Petroleum Reserve in Alaska, April 1977. and April-May 1978: U.S. Geological Survey Water-Resources Investigations/Open-File Report 79-1342, 31 p.
- 15 U.S. Geological Survey, 1969, Water resources of the Arctic Slope Region, Alaska: Preliminary report: U.S. Geological Survey open-file report, 31 p.
- 16 Walker, K.M., York, James, Murphy, Dennis, and Sloan, C.E., 1986, Digital data base of lakes on the North Slope, Alaska: U.S. Geological Survey Water-Resources Investigations Report 86-4143, 13 p.
- 17 Williams, J.R., 1970, A review of water resources of the Umiat area, northern Alaska: U.S. Geological Survey Circular 636, 8 p.
- 18 Seitz, H.R., 1991, Hydrologic conditions at Anaktuvuk Pass, Alaska, 1989: U.S. Geological Survey Open-File Report 90-591, 13 p.

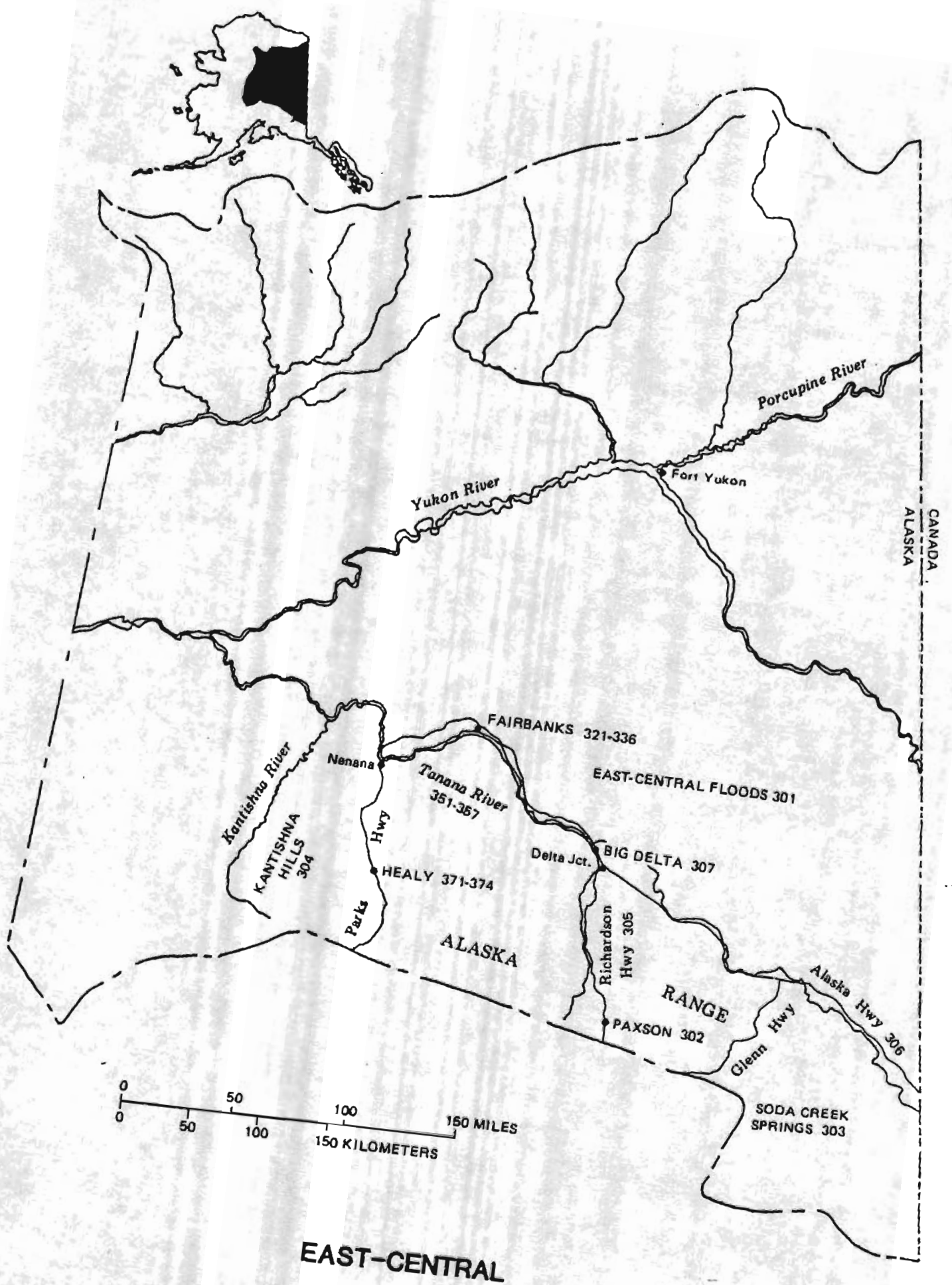
WEST REPORTS

- 101 Black, R.F., 1956, Permafrost, water supply, and engineering geology of Point Spencer spit, Seward Peninsula, Alaska: *Arctic*, v. 11, no. 2, p. 108-116.
- 102 Cederstrom, D.J., 1961, Origin of a salt-water lens in permafrost at Kotzebue, Alaska: *Geological Society of America Bulletin*, v. 72, no. 9, p. 1427-1432.
- 103 Childers, J.M., and Kernodle, D.R., 1981, Hydrologic reconnaissance of the Noatak River basin, Alaska, 1978: U.S. Geological Survey Water-Resources Investigations 81-1005, 38 p.
- 104 ____ 1983, Reconnaissance of surface-water resources in the Kobuk River basin, Alaska, 1979-80: U.S. Geological Survey Water-Resources Investigations Report 83-4027, 35 p.
- 105 Feulner, A.J., 1970, Water-resources reconnaissance of the Kwiguk (Emmonak) area, Alaska: U.S. Geological Survey open-file report, 8 p.
- 106 Sloan, C.E., Kernodle, D.R., and Huntsinger, Ronald, 1986, Hydrologic reconnaissance of the Unalakleet River basin, Alaska, 1982-83: U.S. Geological Survey Water-Resources Investigations Report 86-4089, 18 p.
- 107 Waller, R.M., 1958, Ground-water reconnaissance of six Eskimo villages in the Kobuk-Noatak area, Alaska: U.S. Geological Survey Hydrologic Data Report 4, 8 p.
- 108 ____ 1958, Ground-water reconnaissance of Koyuk and Shaktolik villages, Alaska: U.S. Geological Survey Hydrologic Data Report 7, 10 p.
- 109 ____ 1959, Water-resource reconnaissance of Gambell and Savoonga villages, St. Lawrence Island, Alaska: U.S. Geological Survey Hydrologic Data Report 6, 14 p.
- 110 Waller, R.M., and Mathur, S.P., 1962, Data on water supplies at Nome, Alaska: U.S. Geological Survey Hydrologic Data Report 17, 12 p.
- 111 Weeks, J.B., 1970, Water-resources reconnaissance of the Golovin area, Alaska: U.S. Geological Survey open-file report, 10 p.



SOUTHWEST REPORTS

- 201 Anderson, G.S., 1976, Water-resources reconnaissance of St. George Island, Pribilof Islands, Alaska: U.S. Geological Survey Water-Resources Investigations 6-76, 15 p.
- 202 Feulner, A.J., 1963, Data on wells in the King Salmon area, Alaska: U.S. Geological Survey Hydrologic Data Report 24, 18 p.
- 203 _____ 1980, Water-resources reconnaissance of the southeastern part of St. Paul Island, Pribilof Islands, Alaska: U.S. Geological Survey Water-Resources Investigations 80-61, 12 p.
- 204 Feulner, A.J., Zenone, Chester, and Reed, K.M., 1976, Geohydrology and water supply, Shemya Island, Alaska: U.S. Geological Survey Open-File Report 76-82, 1 sheet.
- 205 Glass, R.L., 1987, Water resources near Dillingham in the Bristol Bay area, Alaska: U.S. Geological Survey Water-Resources Investigations Report 87-4141, 27 p.
- 206 Kernodle, D.R., Squires, R.R., and Childers, J.M., 1983, Reconnaissance of surface-water resources in the Togiak River basin, southwestern Alaska, 1980 and 1982: U.S. Geological Survey Water-Resources Investigations Report 83-4170, 24 p.
- 207 Waller, R.M., 1957, Ground water and permafrost at Bethel, Alaska: U.S. Geological Survey Hydrologic Data Report 2, 11 p.
- 208 _____ 1958, Ground-water reconnaissance of five Eskimo villages in the lower Kuskokwim-Yukon River area, Alaska: U.S. Geological Survey Hydrologic Data Report 5, 11 p.



EAST-CENTRAL REPORTS

- 301 Childers, J.M., Meckel, J.P., and Anderson, G.S., 1972, Floods of August 1967 in East-Central Alaska (With a section on weather features contributing to the floods, by E.D. Diemer): U.S. Geological Survey Water-Supply Paper 1880-A, p. A1-A77.
- 302 Nauman, J.W., and Kernodle, D.R., 1975, Water-quality changes during a salmon run in an interior Alaskan stream: U.S. Geological Survey Journal of Research, v. 3, no. 1, p. 103-105.
- 303 Richter, D.H., Lamarre, R.A., and Donaldson, D.E., 1973, Soda Creek Springs--metamorphic water in the Eastern Alaska Range: U.S. Geological Survey Journal of Research, v. 1, no. 5, p. 523-528.
- 304 Van Maanen, J.L., and Solin, G.L., 1988, Hydraulic and channel characteristics of selected streams in the Kantishna Hills area, Denali National Park and Preserve, Alaska, 1982-84: U.S. Geological Survey Open-File Report 88-325, 105 p.
- 305 Waller, R.M., and Tolen, D.A., 1962, Data on wells and springs along the Richardson Highway, Alaska: U.S. Geological Survey Hydrologic Data Report 16, 32 p.
- 306 _____ 1962, Data on wells along the Alaska Highway, Alaska: U.S. Geological Survey Hydrologic Data Report 18, 26 p.
- 307 Wilcox, D.E., 1980, Geohydrology of the Delta Clearwater area, Alaska: U.S. Geological Survey Water-Resources Investigations 80-92, 26 p.

Fairbanks Area

- 321 Cederstrom, D.J., 1963, Water resources of the Fairbanks area, Alaska: U.S. Geological Survey Water-Supply Paper 1590, 84 p.
- 322 Cederstrom, D.J., and Pewé, T.L., 1960, Ground-water data, Fairbanks, Alaska: U.S. Geological Survey Hydrologic Data Report 9, 28 p.
- 323 Cederstrom, D.J., and Tibbitts, G.C., Jr., 1961, Jet drilling in the Fairbanks area, Alaska: U.S. Geological Survey Water-Supply Paper 1539-B, p. B1-B28.
- 324 Childers, J.M., and Meckel, J.P., 1967, Flood of August 1967 at Fairbanks, Alaska: U.S. Geological Survey Hydrologic Investigations Atlas HA-294.
- 325 Feulner, A.J., 1961, Data on wells at Ladd Air Force Base, Alaska: U.S. Geological Survey Hydrologic Data Report 13, 41 p.
- 326 Flynn, D.M., 1985, Hydrology and geochemical processes of a sub-arctic landfill, Fairbanks, Alaska: Basic data: U.S. Geological Survey Open-File Report 85-195, 41 p.

Fairbanks

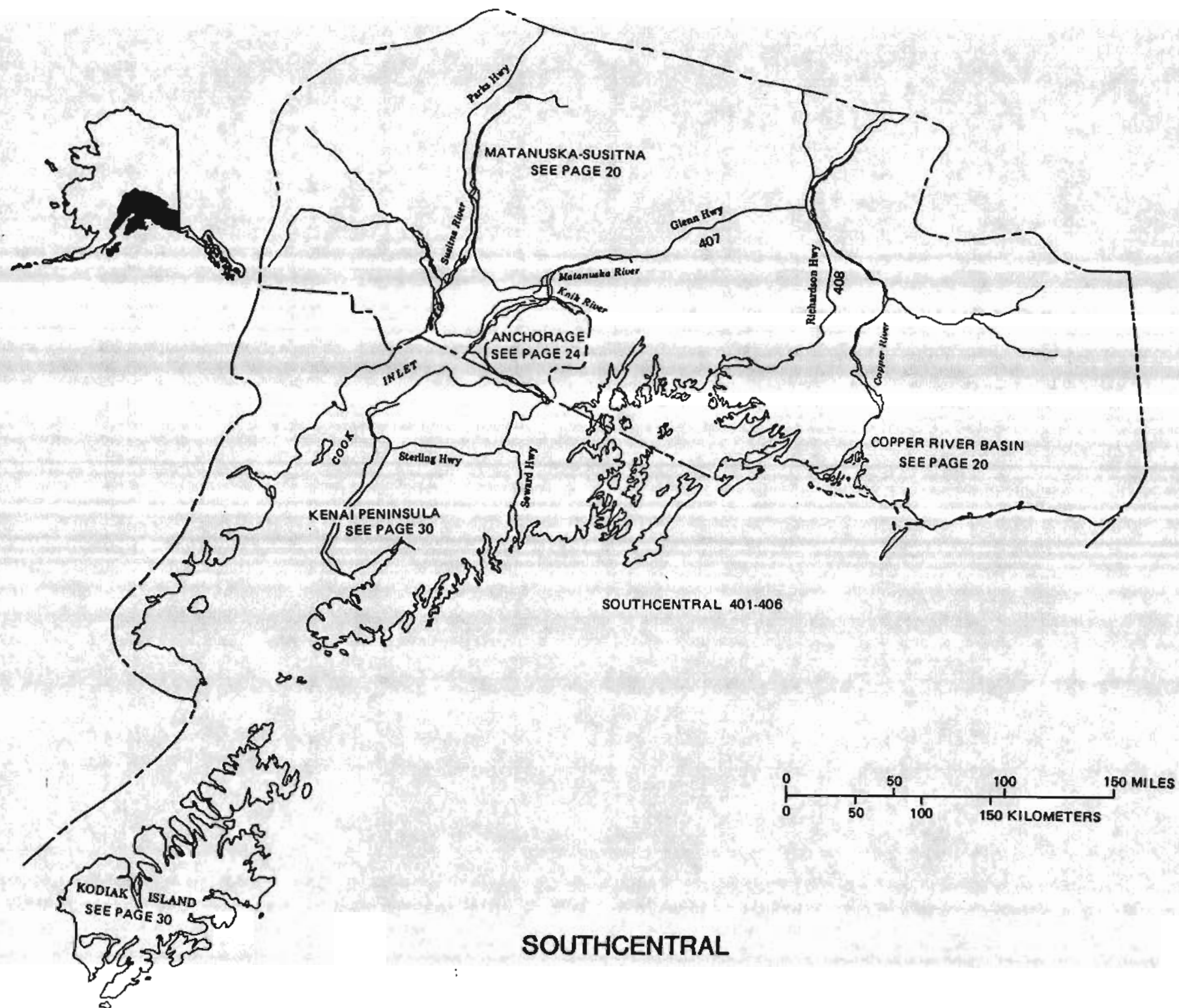
- 327 Hopkins, G.C., and Maxwell, K.F., 1985, Arsenic, nitrate, iron, and hardness in ground water, Goldstream Road, Yankovich Road, and Murphy Dome Road areas (T. 1N., R. 2W., FM) Fairbanks, Alaska: U.S. Geological Survey Open-File Report 85-341, 1 sheet.
- 328 Johnson, P.R., Wilcox, D.E., Morgan, W.D., Merto, Josephine, and McFadden, Ruth, 1978, Arsenic, nitrate, iron, and hardness in ground water, Fairbanks area, Alaska: U.S. Geological Survey Open-File Report 78-1034, 1 sheet.
- 329 Krumhardt, A.P., 1980, Arsenic, nitrate, iron, and hardness in ground water, Chena Ridge vicinity, Fairbanks, Alaska: U.S. Geological Survey Open-File Report 80-49, 1 sheet.
- 330 ____ 1982, Arsenic, nitrate, iron, and hardness in ground water, Chena Hot Springs Road, Steele Creek Road, and Gilmore Trail areas, (T. 1N., R. 1E., FM) Fairbanks, Alaska: U.S. Geological Survey Open-File Report 82-356, 2 sheets.
- 331 ____ 1982, Hydrologic information for land-use planning, Badger Road area, Fairbanks, Alaska: U.S. Geological Survey Water-Resources Investigations 82-4097, 14 p.
- 332 McCoy, G.A., 1974, Preconstruction assessment of biological quality of the Chena and Little Chena Rivers in the vicinity of the Chena Lakes Flood Control Project near Fairbanks, Alaska: U.S. Geological Survey Water-Resources Investigations 29-74, 84 p.
- 333 Nelson, G.L., 1978, Hydrologic information for land-use planning, Fairbanks vicinity, Alaska: U.S. Geological Survey Open-File Report 78-959, 47 p.
- 334 Downey, J.S., and Sinton, P.O., 1990, Geohydrology and ground-water geochemistry at a sub-arctic landfill, Fairbanks, Alaska: U.S. Geological Survey Water-Resources Investigations Report 90-4022, 25 p.
- 335 Pewé and Bell, J.W., 1975, Maps showing distribution of permafrost in the following Fairbanks quadrangles, Alaska:
- | | |
|--------|---|
| D-2 NW | U.S. Geological Survey Miscellaneous Field Studies Map MF-668-A |
| D-2 SE | U.S. Geological Survey Miscellaneous Field Studies Map MF-669-A |
| D-2 NE | U.S. Geological Survey Miscellaneous Field Studies Map MF-670-A |
| D-2 SW | U.S. Geological Survey Miscellaneous Field Studies Map MF-671-A |
- 336 Pewé and Bell, J.W., 1975, Maps showing distribution of ground-water conditions in the following Fairbanks quadrangles, Alaska :
- | | |
|--------|---|
| D-2 NW | U.S. Geological Survey Miscellaneous Field Studies Map MF-668-B |
| D-2 SE | U.S. Geological Survey Miscellaneous Field Studies Map MF-669-B |
| D-2 NE | U.S. Geological Survey Miscellaneous Field Studies Map MF-670-B |
| D-2 SW | U.S. Geological Survey Miscellaneous Field Studies Map MF-671-B |

Tanana River Basin

- 351 Anderson, G.S., 1970, Hydrologic reconnaissance of the Tanana Basin, central Alaska: U.S. Geological Survey Hydrologic Investigations Atlas HA-319, 4 sheets.
- 352 Burrows, R.L., 1980, Cross section, velocity, and bedload data at two erosion sites on the Tanana River near Fairbanks, Alaska, 1979: U.S. Geological Survey Open-File Report 80-699, 32 p.
- 353 Burrows, R.L., Emmett, W.W., and Parks, Bruce, 1981, Sediment transport in the Tanana River near Fairbanks, Alaska, 1977-79: U.S. Geological Survey Water-Resources Investigations 81-20, 56 p.
- 354 Burrows, R.L., and Harrold, P.E., 1983, Sediment transport in the Tanana River near Fairbanks, Alaska, 1980-81: U.S. Geological Survey Water-Resources Investigations Report 83-4064, 116 p.
- 355 Burrows, R.L., Parks, Bruce, and Emmett, W.W., 1979, Sediment transport in the Tanana River in the vicinity of Fairbanks, Alaska, 1977-1978: U.S. Geological Survey Open-File Report 79-1539, 37 p.
- 356 Emmett, W.W., Burrows, R.L., and Parks, Bruce, 1978, Sediment transport in the Tanana River in the vicinity of Fairbanks, Alaska, 1977: U.S. Geological Survey Open-File Report 78-290, 28 p.
- 357 Harrold, P.E., and Burrows, R.L., 1983, Sediment transport in the Tanana River near Fairbanks, Alaska, 1982: U.S. Geological Survey Water-Resources Investigations Report 83-4213, 52 p.

Healy Area

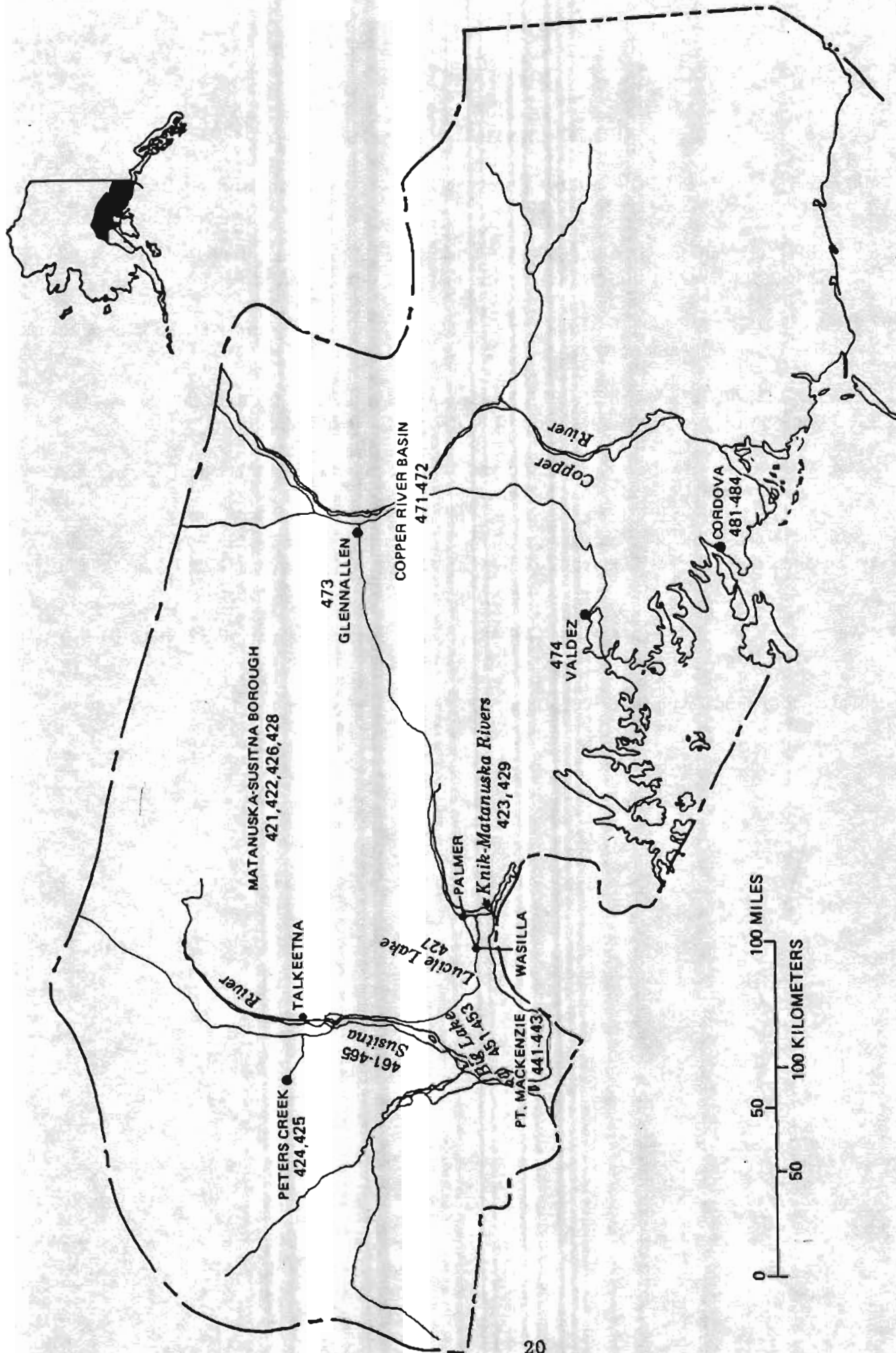
- 371 Cederstrom, D.J., Wahrhaftig, Clyde, and Barnes, F.F., 1950, Ground water in the vicinity of Healy and Homer, Alaska: U.S. Geological Survey open-file report, 4 p.
- 372 Parks, Bruce, 1983, Trace metals in surface water and stream sediments of Healy and Lignite Creek basins, Alaska: U.S. Geological Survey Water-Resources Investigations Report 83-4173, 26 p.
- 373 Scully, D.R., Krumhardt, A.P., and Kernodle, D.R., 1980, Data from a hydrologic reconnaissance of the Beluga, Peters Creek, and Healy coal areas, Alaska: U.S. Geological Survey Open-File Report 80-1206, 54 p.
- 374 _____ 1982, Hydrologic reconnaissance of the Beluga, Peters Creek, and Healy coal areas, Alaska: U.S. Geological Survey Water-Resources Investigations 81-56, 79 p.



SOUTHCENTRAL

SOUTHCENTRAL REPORTS

- 401 Freethy, G.W., 1978, Guide to ground-water data, Cook Inlet basin, Alaska: U.S. Geological Survey Open-File Report 78-439, 207 p.
- 402 Freethy, G.W., and Scully, D.R., 1980, Water resources of the Cook Inlet basin, Alaska: U.S. Geological Survey Hydrologic Investigations Atlas HA-620, 4 sheets.
- 403 Lamke, R.D., 1972, Floods in the summer of 1971 in south-central Alaska: U.S. Geological Survey open-file report, 88 p.
- 404 Lamke, R.D., and Bigelow, B.B., 1987, Floods of October 1986 in southcentral Alaska: U.S. Geological Survey Open-File Report 87-391, 31 p. (Revised 1988).
- 405 Maurer, M.A., and Woods, P.F., 1988, Index to limnological data for southcentral Alaska lakes: U.S. Geological Survey Open-File Report 87-529, 146 p.
- 406 Scully, D.R., Leveen, L.S., and George, R.S., 1978, Surface water records of the Cook Inlet basin, Alaska, through September 1975: U.S. Geological Survey Open-File Report 78-498, 120 p.
- 407 Waller, R.M., and Selkregg, L.M., 1962, Data on wells and springs along the Glenn Highway, Alaska: U.S. Geological Survey Hydrologic Data Report 15, 23 p.
- 408 Waller, R.M., and Tolen, D.A., 1962, Data on wells and springs along the Richardson Highway, Alaska: U.S. Geological Survey Hydrologic Data Report 16, 32 p.



MATANUSKA-SUSITNA / CORDOVA

Ground Water

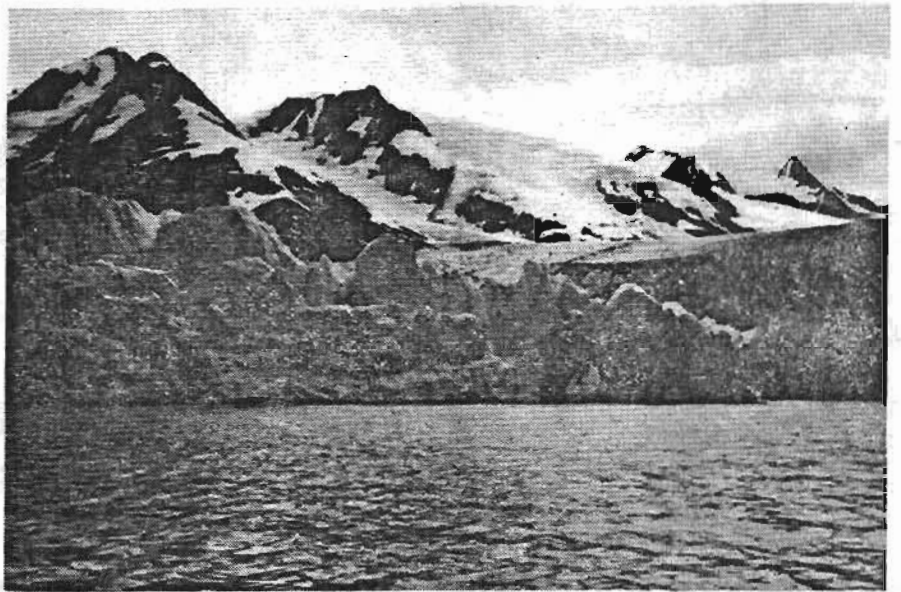
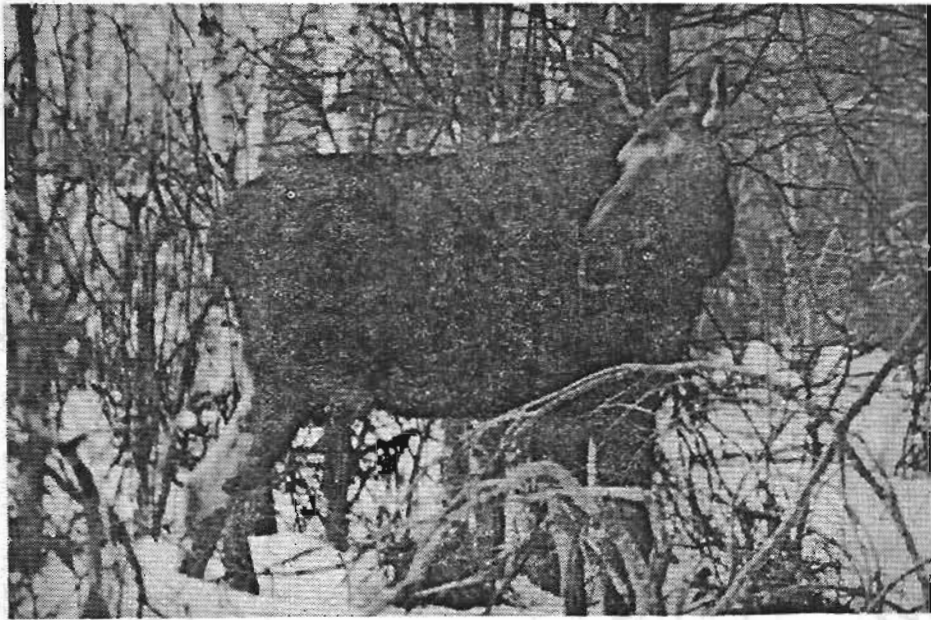
- 551 Anderson, G.S., 1977, Artificial recharge experiments on the Ship Creek alluvial fan, Anchorage, Alaska: U.S. Geological Survey Water-Resources Investigations 77-38, 39 p.
- 552 Brunett, J.O., 1990, Movement of contaminated ground water from Merrill Field Landfill, Anchorage, Alaska: U.S. Geological Survey Open-File Report 89-624, 20 p.
- 553 Cederstrom, D.J., Trainer, F.W., and Waller, R.M., 1964, Geology and ground-water resources of the Anchorage area, Alaska: U.S. Geological Survey Water-Supply Paper 1773, 108 p.
- 554 Dearborn, L.L., and Freethey, G.W., 1974, Water-table contour map, Anchorage area, Alaska: U.S. Geological Survey open-file report, 1 map.
- 555 Freethey, G.W., 1976, Relative permeability of surficial geologic materials, Anchorage and vicinity, Alaska: U.S. Geological Survey Miscellaneous Investigations Series (Folio) I-787-F.
- 556 Freethey, G.W., Reeder, J.W., and Barnwell, W.W., 1974, Map showing depth to water, Anchorage area, Alaska: U.S. Geological Survey open-file report, 1 sheet.
- 557 Glass, R.L., 1987, Ground-water levels in Anchorage, Alaska, 1985: U.S. Geological Survey Open-File Report 87-546, 15 p. + 1 oversize sheet.
- 558 ____ 1988, Map showing depth to bedrock, Anchorage, Alaska: U.S. Geological Survey Open-File Report 88-198, 1 sheet.
- 559 Meyer, William, and Patrick, L.D., 1980, Effects of artificial-recharge experiments at Ship Creek alluvial fan on water levels at Spring Acres subdivision, Anchorage, Alaska: U.S. Geological Survey Open-File Report 80-1284, 42 p.
- 560 Patrick, L.D., Brabets, T.P., and Glass, R.L., 1989, Simulation of ground-water flow at Anchorage, Alaska, 1955-83: U.S. Geological Survey Water-Resources Investigations Report 88-4139, 41 p.
- 561 Nelson, G.L., 1982, Vertical movement of ground water under the Merrill Field landfill, Anchorage, Alaska: U.S. Geological Survey Open-File Report 82-1016, 24 p.
- 562 U.S. Geological Survey, Water Resources Division, Alaska District, 1987, Pumpage data from public supply wells at Anchorage, Alaska, 1957-1985: U.S. Geological Survey Open-File Report 86-542, 48 p. + 1 oversize map.
- 563 ____ 1964, Hydrology and the effects of increased ground-water pumping in the Anchorage area, Alaska: U.S. Geological Survey Water-Supply Paper 1779-D, p. D1-D36.
- 564 Waller, R.M., Cederstrom, D.J., and Trainer, F.W., 1961, Data on wells in the Anchorage area, Alaska: U.S. Geological Survey Hydrologic Data Report 14, 35 p.

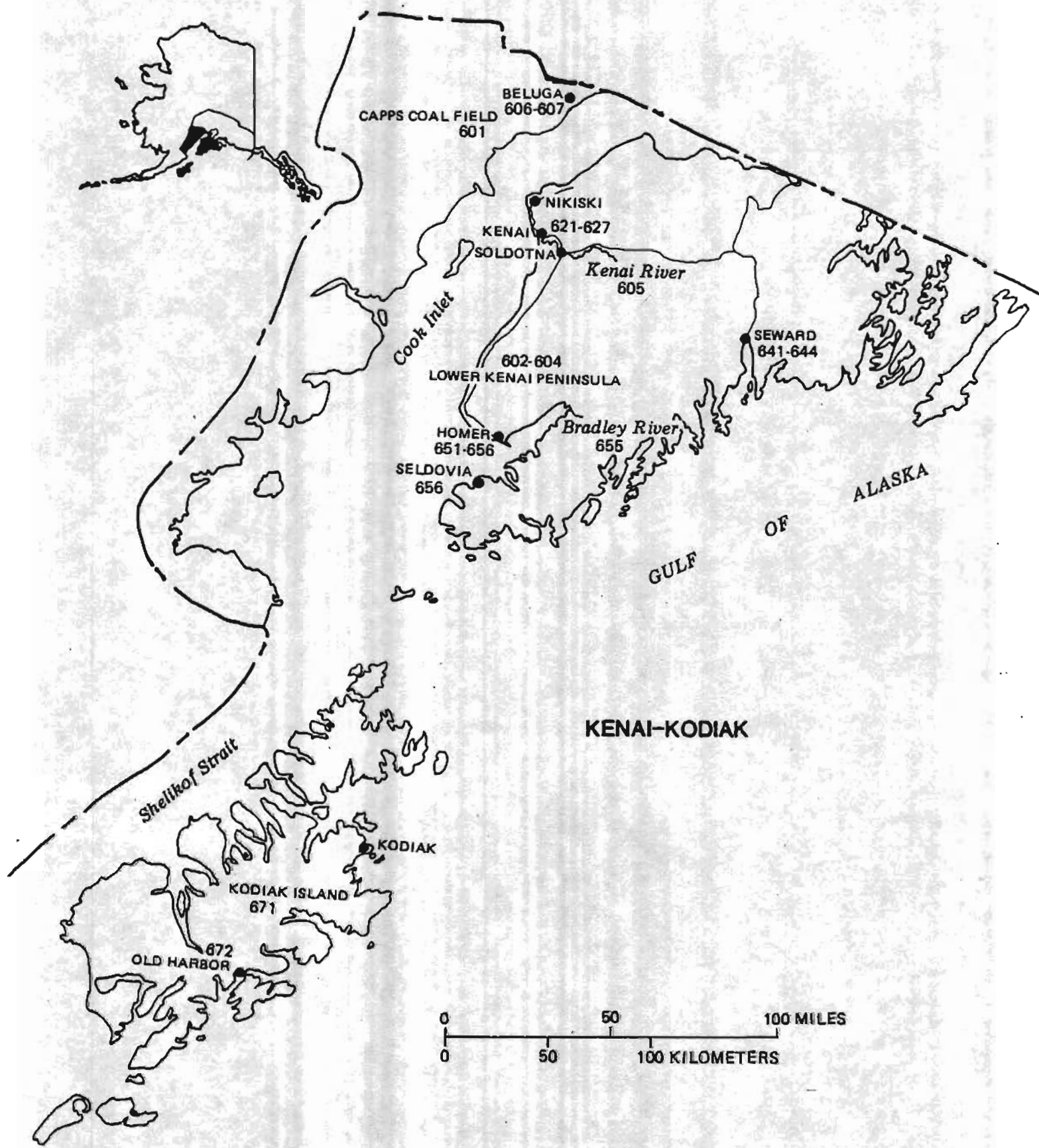
Anchorage

- 565 Zenone, Chester, and Donaldson, D.E., 1974, Water quality and geohydrologic data at two sanitary landfill sites near Anchorage, Alaska: U.S. Geological Survey open-file report, 1 sheet.
- 566 Zenone, Chester, Donaldson, D.E., and Grunwaldt, J.J., 1975, Ground-water quality beneath solid-waste disposal sites at Anchorage, Alaska: *Groundwater*, v. 13, p. 182-190.

Potter to Portage

- 581 Brabets, T. P., 1984, Instrumentation of the tide-affected Potter Marsh outlet near Anchorage, Alaska, in "Alaska's water--a critical resource," Proceedings, Alaska Section, American Water Resources Association: Institute of Water Resources, University of Alaska, Fairbanks, Report IWR-106, p. 15-23.
- 582 Emanuel, R.P., and Cowing, D.J., 1982, Hydrogeology for land-use planning: The Potter Creek area, Anchorage, Alaska: U.S. Geological Survey Water-Resources Investigations/Open-File Report 82-86, 4 sheets.
- 583 Schmoll, H.R., and Emanuel, R.P., 1981, Generalized geologic map and hydrologic properties of Potter Creek area, Municipality of Anchorage, Alaska: U.S. Geological Survey Open-File Report 81-1168.
- 584 Glass, R.L., and Brabets, T.P., 1988, Summary of water resources data for the Girdwood-Alyeska area, Alaska: U.S. Geological Survey Open-File Report 87-678, 24 p.
- 585 Zenone, Chester, 1974, Geology and water resources of the Girdwood-Alyeska area, Alaska: U.S. Geological Survey open-file report, 24 p.





Kenai Peninsula Borough

- 601 Nelson, G.L., 1985, Results of test drilling and hydrogeology of Capps Coal field, Alaska: U.S. Geological Survey Water-Resources Investigations Report 85-4114, 23 p.
- 602 Nelson, G.L., and Johnson, P.R., 1981, Ground-water reconnaissance of part of the lower Kenai Peninsula, Alaska: U.S. Geological Survey Water-Resources Investigations 81-905, 32 p.
- 603 Savard, C.S., 1984, Surface-water quantity and quality in the lower Kenai Peninsula, Alaska: U.S. Geological Survey Water-Resources Investigations Report 84-4161, 62 p.
- 604 _____ 1984, Estimating annual mean and 7-day 10-year low-flow discharges for partial record stations in the lower Kenai Peninsula, Alaska, in "Alaska's water—a critical resource," Proceedings, Alaska Section, American Water Resources Association: Institute of Water Resources, University of Alaska, Fairbanks, Report IWR 106, p. 93-106.
- 605 Scott, K.M., 1982, Erosion and sedimentation in the Kenai River, Alaska: U.S. Geological Survey Professional Paper 1235, 35 p.
- 606 Scully, D.R., Krumhardt, A.P., and Kernodle, D.R., 1980, Data from a hydrologic reconnaissance of the Beluga, Peters Creek, and Healy coal areas, Alaska: U.S. Geological Survey Open-File Report 80-1206, 54 p.
- 607 _____ 1982, Hydrologic reconnaissance of the Beluga, Peters Creek, and Healy coal areas: U.S. Geological Survey Water-Resources Investigations 81-56, 79 p.

Kenai-Soldotna Area

- 621 Anderson, G.S., 1971, Ground-water exploration, Beaver Creek valley near Kenai, Alaska: U.S. Geological Survey open-file report, 27 p.
- 622 _____ 1972, Aquifer test, Soldotna, Alaska: U.S. Geological Survey open-file report, 17 p.
- 623 Anderson, G.S., and Jones, S.H., 1971, Hydrologic data of the Kenai-Soldotna area, Alaska: U.S. Geological Survey open-file report, 57 p.
- 624 _____ 1971, Lake-level fluctuations in the Kenai-Soldotna area, Alaska, 1967-71: U.S. Geological Survey open-file report, 5 p.
- 625 _____ 1972, Water resources of the Kenai-Soldotna area, Alaska: U.S. Geological Survey open-file report, 81 p.
- 626 Bailey, B.J., 1983, Hydrologic data stations and lake levels, Kenai-Nikiski area, Alaska, 1983: U.S. Geological Survey Open-File Report 83-938, 1 sheet.
- 627 Nelson, G.L., 1981, Hydrology and the effects of industrial pumping in the Nikiski area, Alaska: U.S. Geological Survey Water-Resources Investigations 81-685, 22 p.

Seward Area

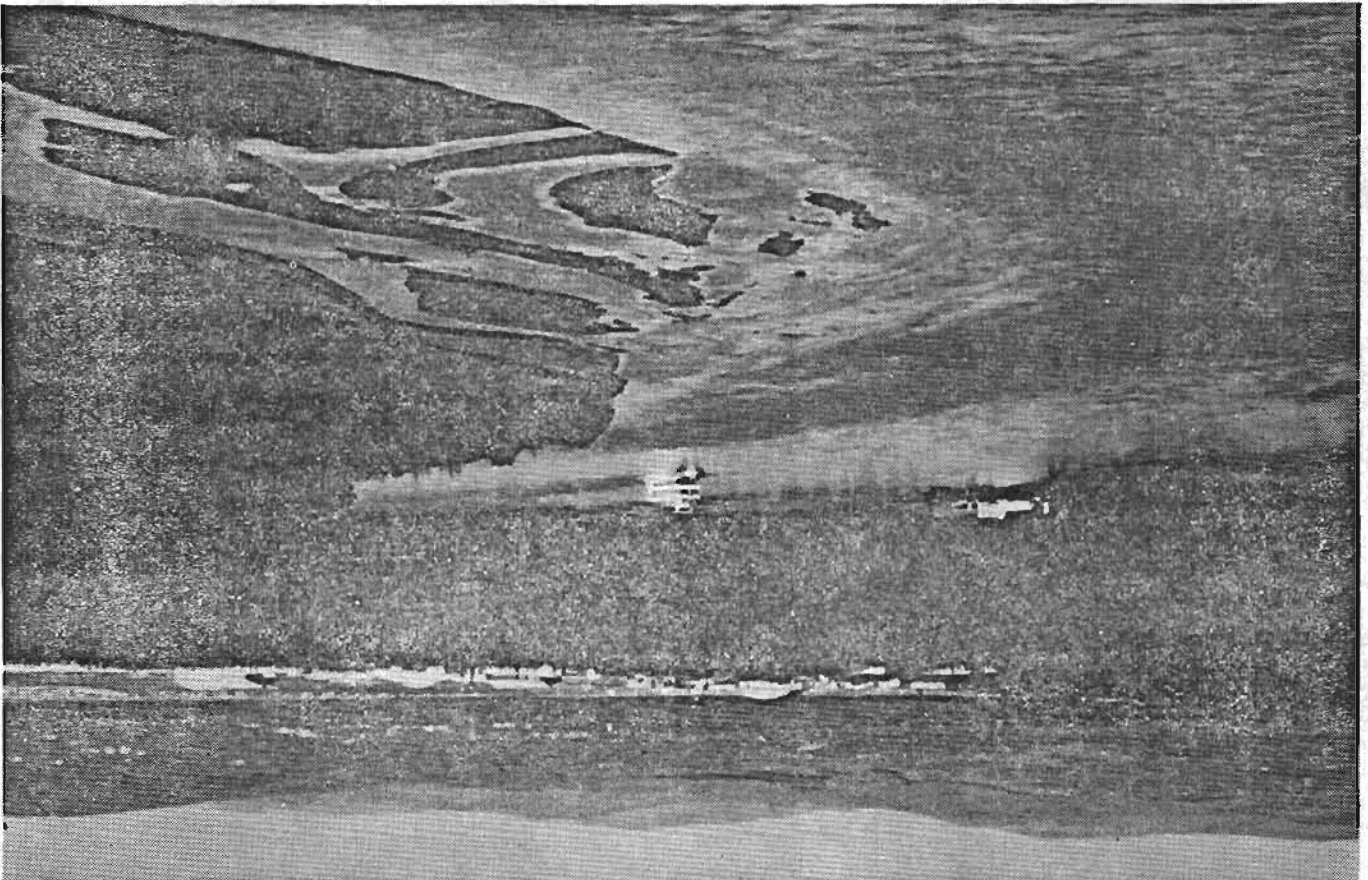
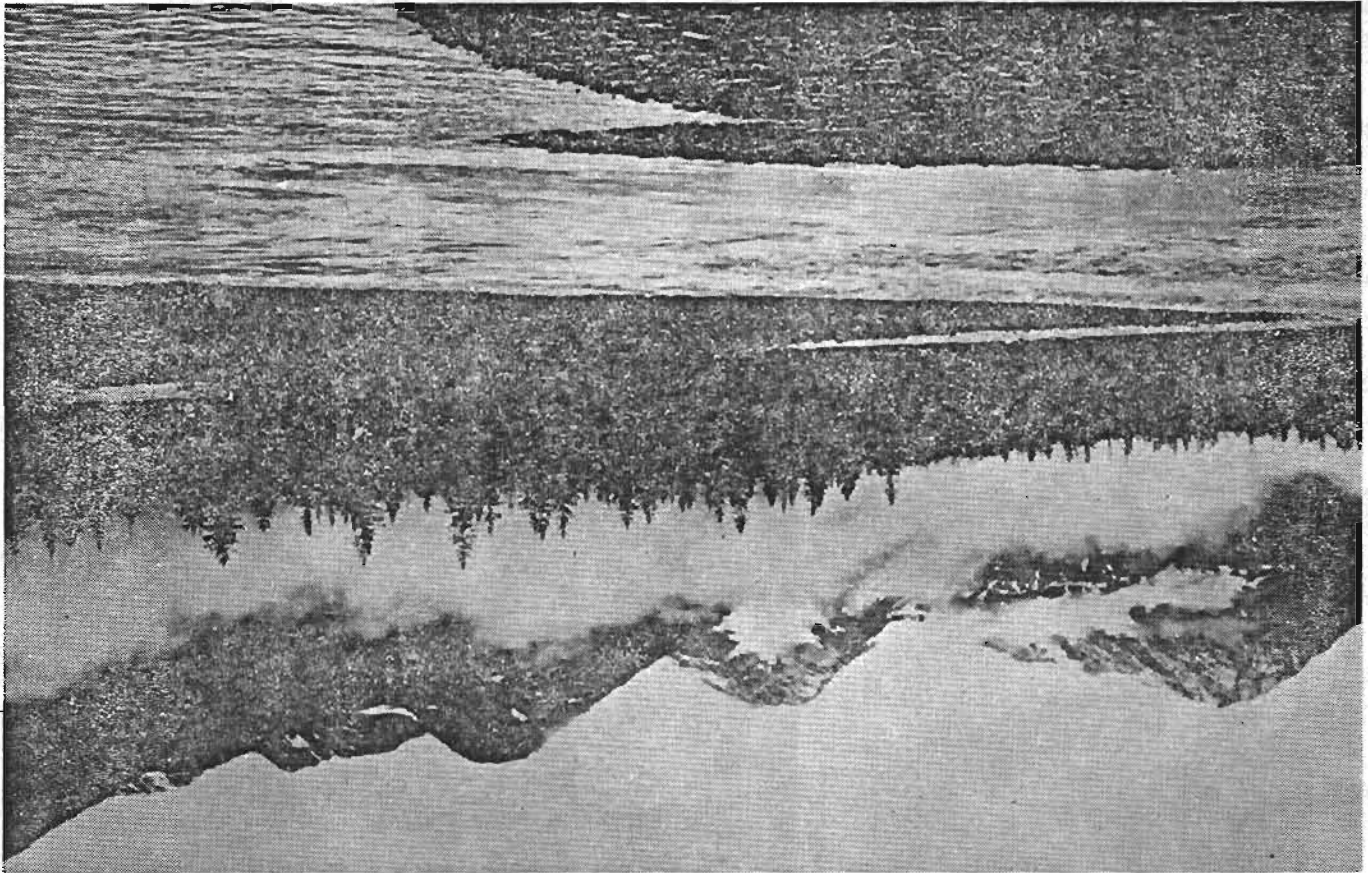
- 641 Dearborn, L.L., Anderson, G.S., and Zenone, Chester, 1979, Water resources data of the Seward area, Alaska: U.S. Geological Survey Water-Resources Investigations 79-11, 45 p.
- 642 Jones, S.H., and Zenone, Chester, 1988, Flood of October 1986 at Seward, Alaska: U.S. Geological Survey Water-Resources Investigations Report 87-4278, 43 p. + 2 plates.
- 643 Nelson, G.L., 1981, Hydrologic reconnaissance near Fourth of July Creek, Seward, Alaska: U.S. Geological Survey Water-Resources Investigations 81-21, 10 p.
- 644 Sloan C.E., 1985, Water resources and hydrologic hazards of the Exit Glacier area near Seward, Alaska: U.S. Geological Survey Water-Resources Investigations Report 85-4247, 8 p.

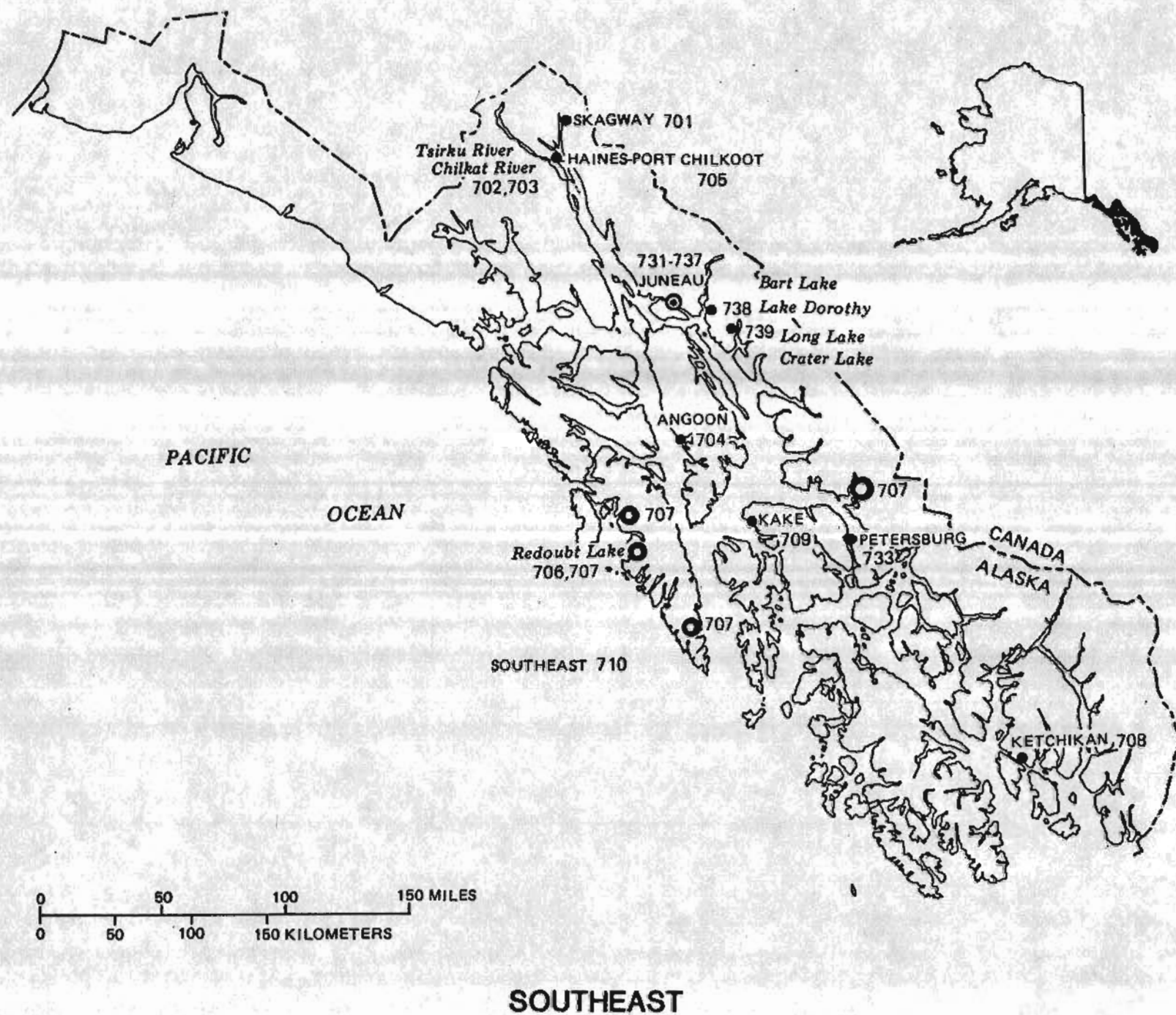
Homer Area

- 651 Cederstrom, D.J., Wahrhaftig, Clyde, and Barnes, F.F., 1950, Ground water in the vicinity of Healy and Homer, Alaska: U.S. Geological Survey open-file report, 4 p.
- 652 Feulner, A.J., 1963, Water-supply potential in the Ohlson Mountain area, Kenai Peninsula, Alaska: U.S. Geological Survey Hydrologic Data Report 22, 16 p.
- 653 Waller, R.M., 1963, Data on wells in the Homer area, Alaska: U.S. Geological Survey Hydrologic Data Report 23, 24 p.
- 654 Waller, R.M., Feulner, A.J., and Morris, D.A., 1968, water resources and surficial geology of the Homer area, southcentral U.S. Geological Survey: U.S. Geological Survey Hydrologic Investigations Atlas HA-187.
- 655 Johnson, F.A., 1961, Waterpower resources of the Bradley River basin, Kenai Peninsula, Alaska: U.S. Geological Survey Water-Supply Paper 1610-A, p. A1-A25.
- 656 Nelson, G.L., and Danskin, W.R., 1980, Hydrogeology of the Seldovia area, Alaska: U.S. Geological Survey Water-Resources Investigations 80-952, 2 sheets.

Kodiak Island

- 671 Jones, S.H., Madison, R.J., and Zenone, Chester, 1978, Water resources of the Kodiak-Shelikof subregion, southcentral Alaska: U.S. Geological Survey Hydrologic Investigations Atlas HA-612, 2 sheets.
- 672 Weeks, J.B., 1970, Water-resources reconnaissance of the Old Harbor area, Kodiak Island, Alaska: U.S. Geological Survey open-file report, 8 p.



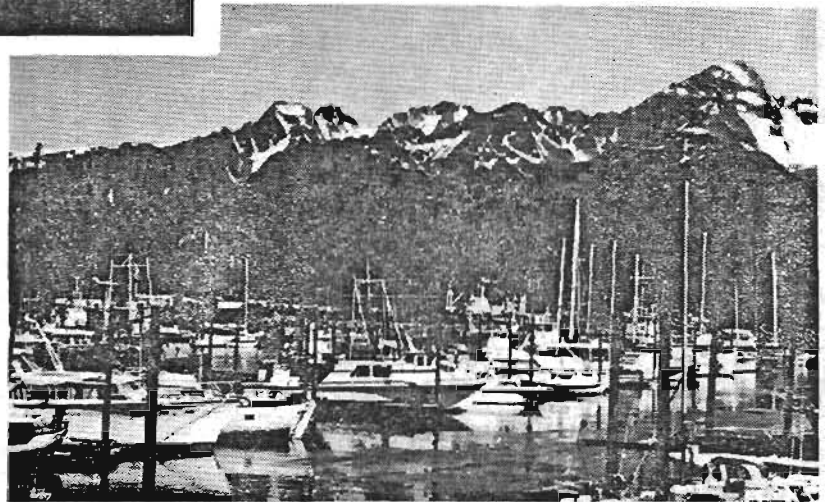
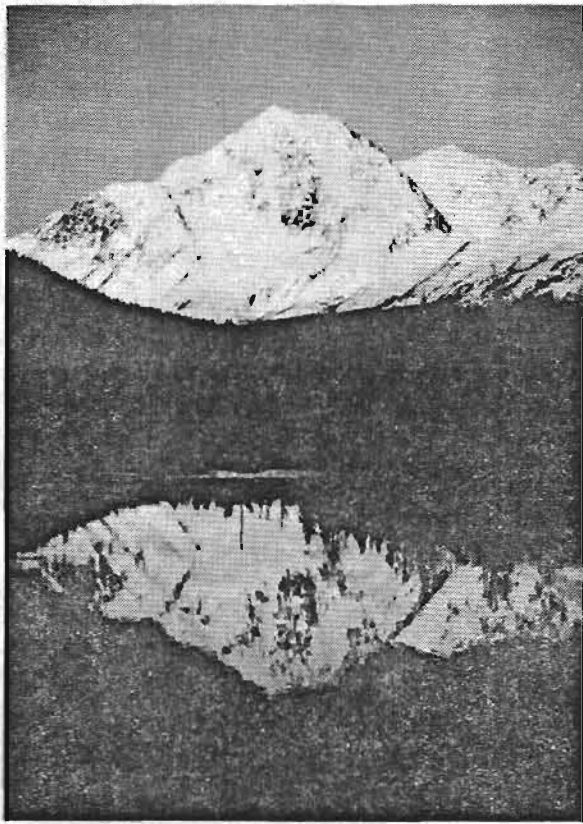


SOUTHEAST REPORTS

- 701 Balding, G.O., 1975, Water-resources data for Skagway, Alaska: U.S. Geological Survey open-file report, 34 p.
- 702 Bugliosi, E.F., 1985, Hydrology of Tsirku River alluvial fan near Haines, in "Resolving Alaska's water resources conflicts," Proceedings, Alaska Section, American Water Resources Association: Institute of Water Resources, University of Alaska, Fairbanks, Report IWR-108, p. 179-189.
- 703 ____ 1988, Hydrologic reconnaissance of the Chilkat River basin, southeast Alaska, with special reference to the Alaska Bald Eagle Preserve: U.S. Geological Survey Water-Resources Investigations Report 88-4023, 38 p.
- 704 Lockwood, W.N., 1963, Report on water-well drilling at Angoon, Alaska: U.S. Geological Survey open-file report, 19 p.
- 705 McConaghy, J.A., 1970, Reconnaissance of water resources in the Haines-Port Chilkoot area, Alaska: U.S. Geological Survey Circular 626, 16 p.
- 706 McCoy, G.A., 1977, A reconnaissance investigation of a large meromictic lake in southeastern Alaska: U.S. Geological Survey Journal of Research, v. 5, no. 3, p. 319-324.
- 707 McCoy, G.A., Wiggins, W.W., and Schmidt, A.E., 1977, Limnological investigation of six lakes in southeast Alaska: U.S. Geological Survey Water-Resources Investigations 76-122, 1 sheet.
- 708 Waller, R.M., 1957, Ground-water reconnaissance and drilled wells - Studies in the Ketchikan area: U.S. Geological Survey Hydrologic Data Report 3, 5 p.
- 709 ____ 1957, Ground-water supply at Kake, Alaska: U.S. Geological Survey open-file report, 6 p.
- 710 Waller, R.M., and Tolen, D.A., 1962, Data on ground-water exploration and development in southeastern Alaska: U.S. Geological Survey Hydrologic Data Report 19, 15 p.

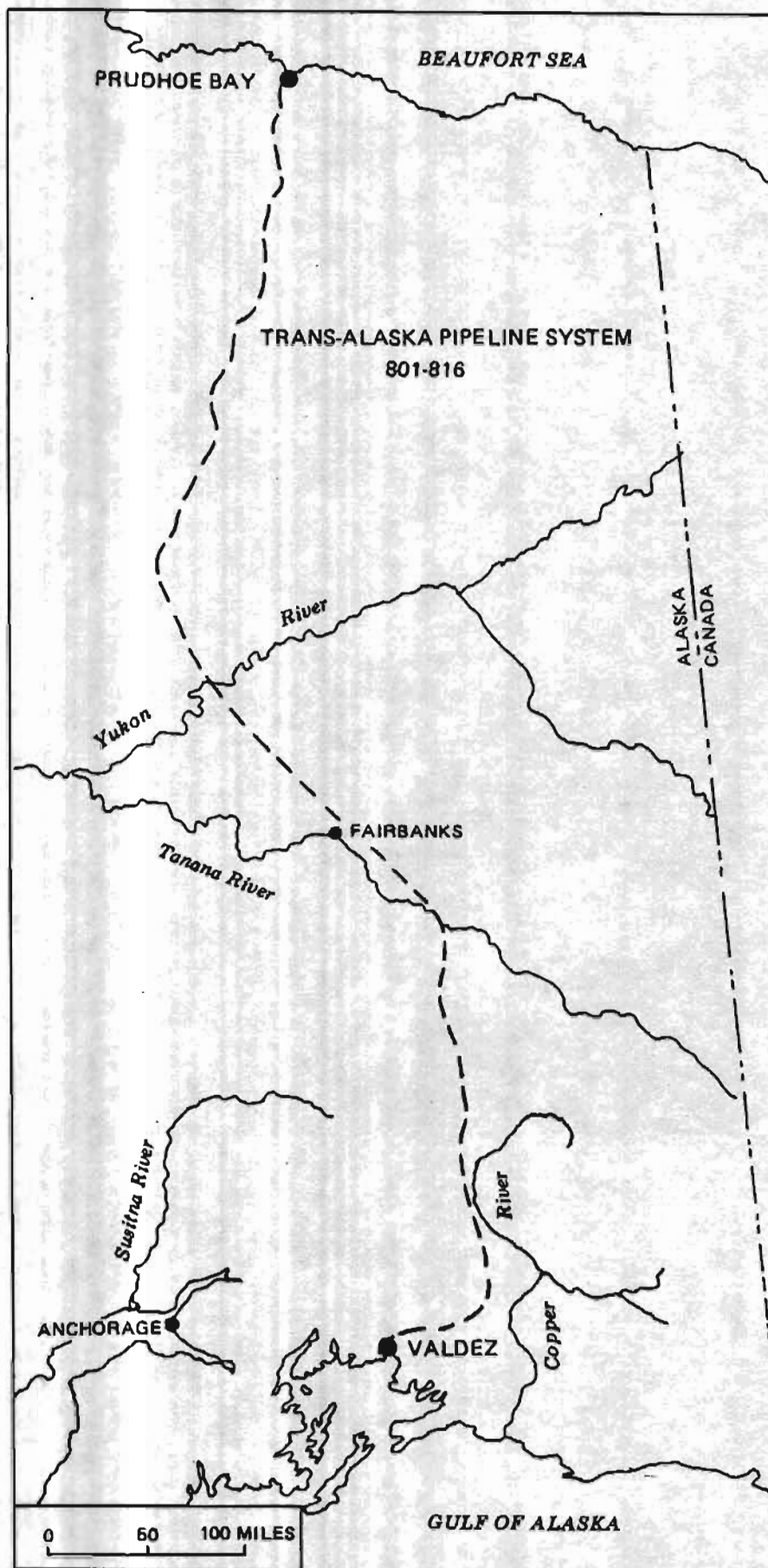
Juneau Area

- 731 Balding, G.O., 1982, Aquifer data from four wells in the Mendenhall Valley near Juneau, Alaska: U.S. Geological Survey Open-File Report 82-271, 16 p.
- 732 Barnwell, W.W., and Boning, C.W., 1968, Water resources and surficial geology of the Mendenhall Valley, Alaska: U.S. Geological Survey Hydrologic Investigations Atlas HA-259.
- 733 Johnson, F.A., 1962, Waterpower resources near Petersburg and Juneau, southeastern Alaska: U.S. Geological Survey Water-Supply Paper 1529, 102 p.
- 734 McConaghy, J.A., 1969, Hydrologic data of the Juneau Borough, Alaska: U.S. Geological Survey open-file report, 77 p.
- 735 McConaghy, J.A., and Bowman, W.N., 1971, Water resources of the City and Borough of Juneau, Alaska: U.S. Geological Survey open-file report, 62 p.
- 736 Waller, R.M., 1957, Ground-water reconnaissance and drilled wells -- Studies in the Gastineau Channel area: U.S. Geological Survey Hydrologic Data Report 1, 9 p.
- 737 _____ 1959, Test-drilling results in Last Chance Basin, Juneau, Alaska: U.S. Geological Survey Hydrologic Data Report 8, 15 p.
- 738 Seitz, H.R., and Thomas, D.S., 1990, Fathometer data from Bart Lake and Lake Dorothy near Juneau, Alaska, 1988-89: U.S. Geological Survey Open-File Report 90-152, 14 p.
- 739 Sloan, C.E., Emery, P.A., Fair, Diana, and Lamke, R.D., 1986, Effect of glacier ablation on the Snettisham Hydroelectric Project, Long Lake and Crater Lake basins, Alaska (with a section on streamflow records): U.S. Geological Survey Water-Resources Investigations Report 85-4315, 22 p. + 1 plate.



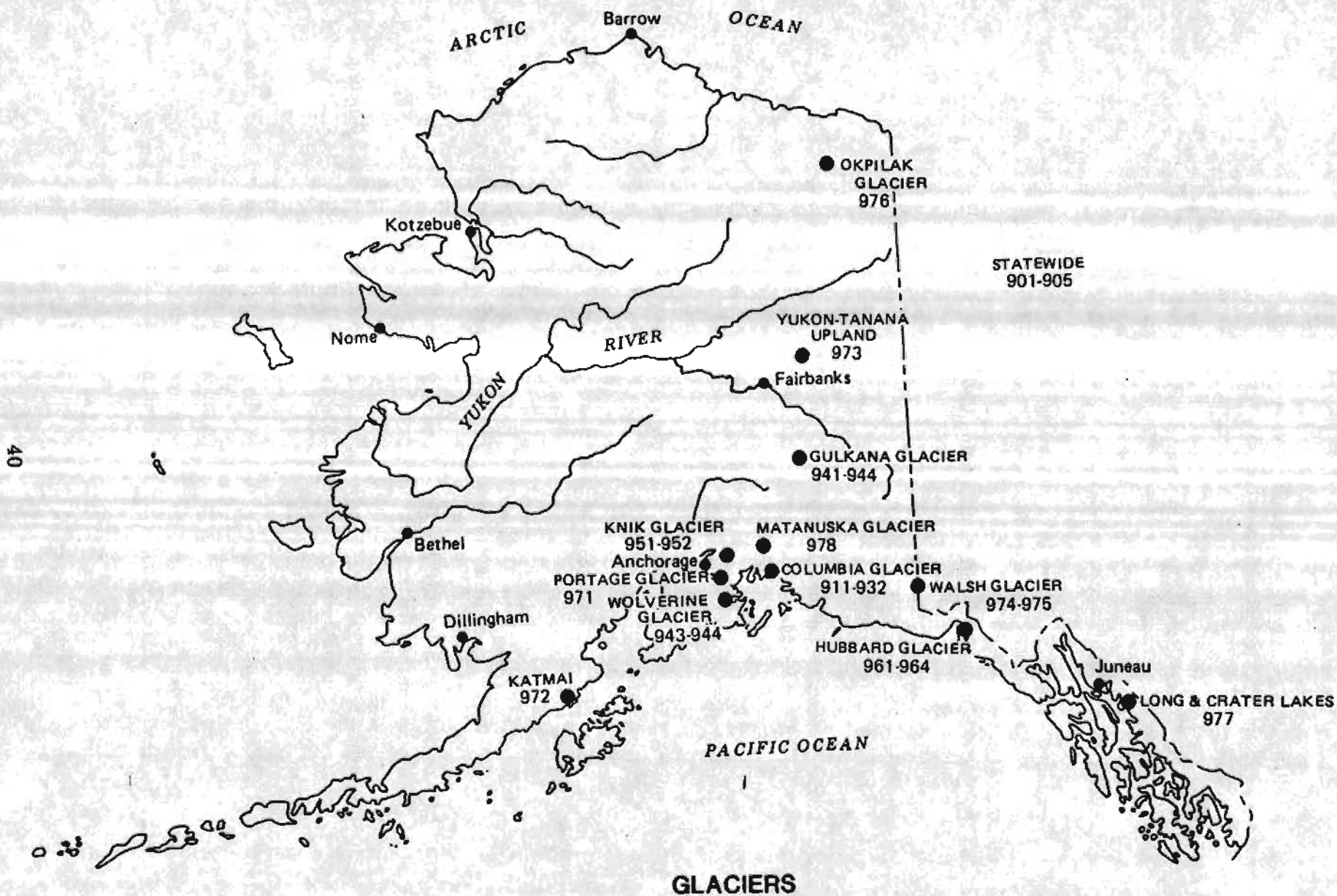


TAPS



TRANS-ALASKA PIPELINE SYSTEM (TAPS) REPORTS

- 801 Childers, J.M., Nauman, J.W., Kernodle, D.R., and Doyle, P.F., 1978, Water resources along the TAPS route, Alaska, 1970-74: U.S. Geological Survey Open-File Report 78-137, 136 p.
- 802 Emmett, W.W., 1972, The hydraulic geometry of some Alaskan streams south of the Yukon River: U.S. Geological Survey open-file report, 102 p.
- 803 Sloan, C.E., Zenone, Chester, and Mayo, L.R., 1976, Icings along the trans-Alaska pipeline route: U.S. Geological Survey Professional Paper 979, 31 p.
- 804 Brice, James, 1971, Measurement of lateral erosion at proposed river crossing sites of the Alaska pipeline: U.S. Geological Survey open-file report, 39 p.
- 805 Childers, J.M., 1972, Channel erosion surveys along proposed TAPS route, Alaska, July 1971: U.S. Geological Survey open-file report, 79 p.
- 806 _____ 1975, Channel erosion along southern segment of the TAPS route, Alaska, 1972 and 1973: U.S. Geological Survey open-file report, 57 p.
- 807 Childers, J.M., and Jones, S.H., 1975, Channel erosion surveys along TAPS route, Alaska, 1974: U.S. Geological Survey open-file report, 145 p.
- 808 Doyle, P.F., and Childers, J.M., 1975, Channel erosion surveys along TAPS route, Alaska, 1975: U.S. Geological Survey open-file report, 95 p. [1976].
- 809 _____ 1977, Channel erosion surveys along TAPS route, Alaska, 1976: U.S. Geological Survey Open-File Report 77-170, 90 p.
- 810 Loeffler, R.M., and Childers, J.M., 1978, Channel erosion surveys along the TAPS route, Alaska, 1977: U.S. Geological Survey Open-File Report 78-611, 90 p.
- 811 Childers, J.M., 1974, Flood surveys along TAPS route, Alaska: U.S. Geological Survey open-file report, 16 p.
- 812 Childers, J.M., and Lamke, R.D., 1973, Flood survey at proposed TAPS crossings of Yukon River near Stevens Village, Alaska: U.S. Geological Survey open-file report, 12 p.
- 813 Lamke, R.D., and Jones, S.H., 1980, Flood-prone area maps of three sites along the trans-Alaska pipeline, Alaska: U.S. Geological Survey Open-File Report 80-209, 14 p.
- 814 Nauman, J.W., and Kernodle, D.R., 1973, Field water quality information along proposed trans-Alaska pipeline corridor, September 1970 through September 1972: U.S. Geological Survey open-file report, 22 p.
- 815 _____ 1974, Aquatic organisms from selected sites along the proposed trans-Alaska pipeline corridor, September 1970 to September 1972: U.S. Geological Survey open-file report, 23 p.
- 816 _____ 1977, Aquatic organisms from selected sites along the trans-Alaska pipeline corridor, September 1970 to September 1972, Supplement: U.S. Geological Survey Open-File Report 77-634, 59 p.



Gulkana and Wolverine Glaciers

- 941 Mayo, L.R., and Pewe, T.L., 1963, Ablation and net total radiation, Gulkana Glacier, Alaska, chapter 43 in *Ice and snow—properties, processes, and application*, Conference, Massachusetts Institute of Technology, 1962, Proceedings: Cambridge, Mass., M.I.T. Press, p. 633-643.
- 942 Mayo, L.R., and Trabant, D.C., 1986, Recent growth of Gulkana Glacier, Alaska Range, and its relation to glacier-fed river runoff: U.S. Geological Survey Water-Supply Paper 2290, p. 91-99.
- 943 Meier, M.F., Tangborn, W.V., Mayo, L.R., and Post, Austin, 1971, Combined ice and water balances of Gulkana and Wolverine Glaciers, Alaska, and South Cascade Glacier, Washington, 1965 and 1966 hydrologic years: U.S. Geological Survey Professional Paper 715-A, p. A1-A23.
- 944 Tangborn, W.V., Mayo, L.R., Scully, D.R., and Krimmel, R.M., 1977, Combined ice and water balances of Maclure Glacier, California, South Cascade Glacier, Washington, and Wolverine and Gulkana Glaciers, Alaska, 1967 hydrologic year: U.S. Geological Survey Professional Paper 715-B, p. B1-B20.

Knik Glacier

- 951 Mayo, L.R., and Trabant, D.C., 1982, Geodetic trisection, altitude, and ice-radar surveying techniques used at Knik Glacier, Alaska, and summary of 1979, 1980, and 1981 data: U.S. Geological Survey Open-File Report 82-685, 26 p.
- 952 Trabant, D.C., and Mayo, L.R., 1980, Knik Glacier, Alaska—May 1979 monument and glacier survey: U.S. Geological Survey Open-File Report 80-48, 20 p.

Hubbard Glacier

- 961 Emery, P.A., and Seitz, H.R., 1987, Hubbard Glacier is still on the move: *Geotimes*, (May issue) v. 32, no. 5, p. 8-9.
- 962 Krimmel, R.M., and Sikonia, W.G., 1986, Velocity and surface altitude of lower part of Hubbard Glacier, Alaska, August 1978: U.S. Geological Survey Open-File Report 86-549, 13 p.
- 963 Seitz, H.R., Thomas, D.S., and Tomlinson, Bud, 1986, The storage and release of water from a large glacier-dammed lake: Russell Lake near Yakutat, Alaska: U.S. Geological Survey Open-File Report 86-545, 10 p.
- 964 Trabant, D.C., Krimmel, R.M., and Post, Austin, 1991, A preliminary forecast of the advance of Hubbard Glacier, and its influence on Russell Fiord, Alaska: U.S. Geological Survey Water-Resources Investigations Report 90-4172.

Glaciers

Other Glaciers

- 971 Mayo, L.R., Zenone, Chester, and Trabant, D.C., 1977, Reconnaissance hydrology of Portage Glacier basin, Alaska--1972: U.S. Geological Survey Hydrologic Investigations Atlas HA-583, 2 sheets.
- 972 Muller, E.H., and Coulter, H.W., 1957, The Knife Creek Glaciers of Katmai National Monument, Alaska: *Journal of Glaciology*, v. 3, no. 22, p. 116-122.
- 973 Pewe T.L., Burbank, Lawrence, and Mayo, L.R., 1967, Multiple glaciation of the Yukon-Tanana Upland, Alaska: U.S. Geological Survey Miscellaneous Geologic Investigations Map I-507.
- 974 Post, A.S., 1966, The recent surge of Walsh Glacier, Yukon and Alaska: *Journal of Glaciology*, v. 6, no. 45, p. 373-381.
- 975 _____ 1967, Walsh Glacier surge, 1966 observations: *Journal of Glaciology*, v. 6, no. 47, p. 763-765.
- 976 Sable, E.G., 1961, Recent recession and thinning of Okpilak Glacier, northeastern Alaska: *Arctic*, v. 14, no. 3, p. 176-187.
- 977 Sloan, C.E., Emery, P.A., Fair, Diana, and Lamke, R.D., 1986, Effect of glacier ablation on the Snettisham Hydroelectric Project, Long Lake and Crater Lake basins, Alaska (with a section on streamflow records): U.S. Geological Survey Water-Resources Investigations Report 85-4315, 22 p. + 1 plate.
- 978 Williams, J.R., and Ferrians, O.J., Jr., 1958, Late Wisconsin and Recent history of the Matanuska Glacier, Alaska: *Arctic*, v. 14, no. 2, p. 82-90.