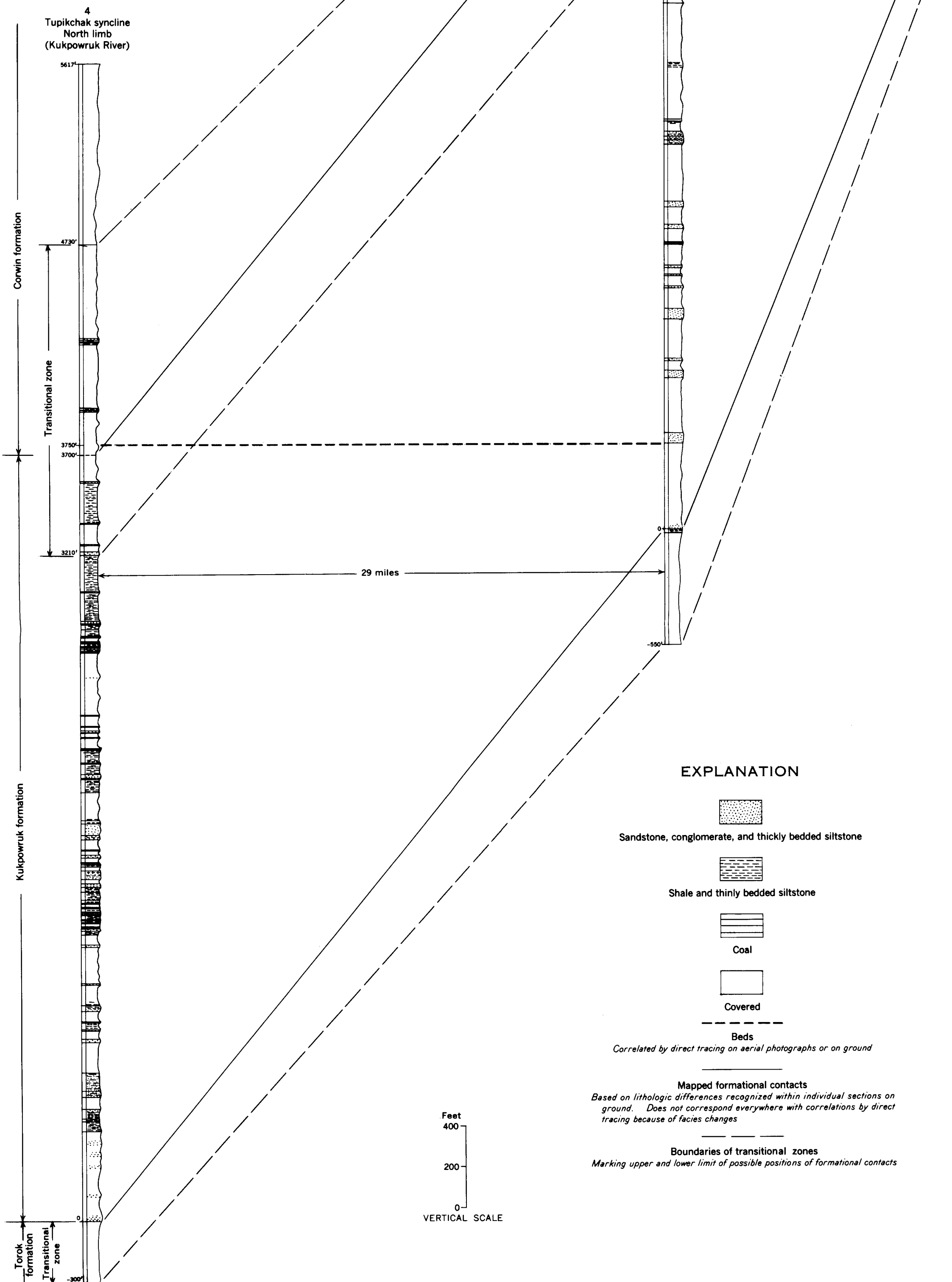


INDEX MAP SHOWING LOCATION OF MEASURED SECTIONS

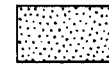

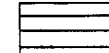
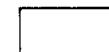

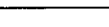
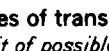
14
Flintchip syncline
South limb
(Kokolik River)

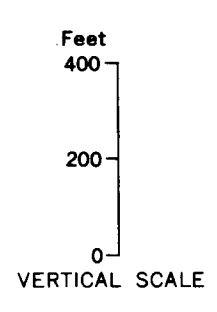
24
Flintchip syncline
South limb
(Utukok River)

4
Tupikchak syncline
North limb
(Kukpowruk River)



EXPLANATION

-  Sandstone, conglomerate, and thickly bedded siltstone
-  Shale and thinly bedded siltstone
-  Coal
-  Covered
-  Beds
Correlated by direct tracing on aerial photographs or on ground
-  Mapped formational contacts
Based on lithologic differences recognized within individual sections on ground. Does not correspond everywhere with correlations by direct tracing because of facies changes
-  Boundaries of transitional zones
Marking upper and lower limit of possible positions of formational contacts



CORRELATED GENERALIZED SECTIONS OF NANUSHUK GROUP ALONG APPROXIMATE LATITUDE 68°55' N., UTUKOK-CORWIN REGION, ALASKA