

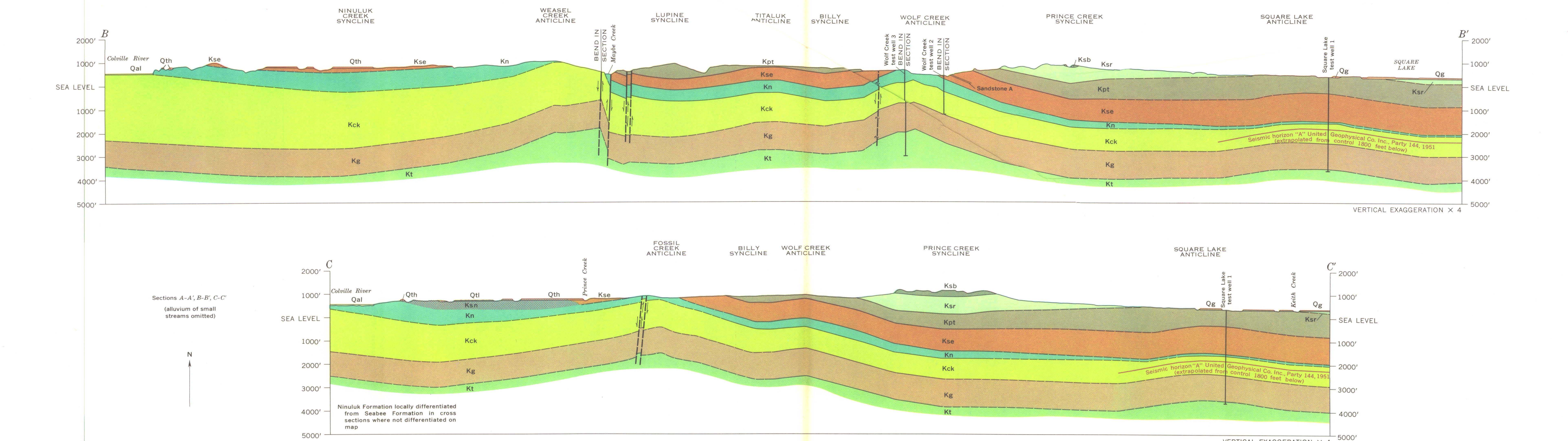
Base map compiled by U.S. Geological Survey 1948-1949

INTERIOR—GEOLOGICAL SURVEY, WASHINGTON, D. C.—1968—G63137

Geology mapped in 1944-53  
Geology of wells by F. R. Collins, F. M. Robinson 1958-1959  
Quaternary geology and Cretaceous geology of many interstream areas largely from interpretation of aerial photographs  
Seismograph Survey by United Geophysical Co., Inc., 1950, 1951

SCALE 1:125 000

DATUM IS ASSUMED SEA LEVEL DATUM OF UMIAT SPECIAL MAP 1948 AND IS 27 FEET 100 HIGH AT UMIAT  
1960 MAGNETIC DECLINATION AT SOUTH EDGE OF SHEET RANGES FROM 25°45' TO 27°30' EAST



GEOLOGIC MAP AND SECTIONS OF THE UMIAT-MAYBE CREEK REGION, ALASKA