

EXPLANATION



Rock glaciers, talus cones, and
alluvial cones of Alaskan age



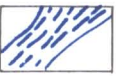
Little-modified moraines of
Naptowne age



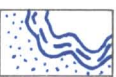
Slightly modified moraines of
Knik age



Moderately modified moraines
of Eklutna age



Highly modified moraines of
Caribou Hills age



Outwash of alluvium associated
with the moraines



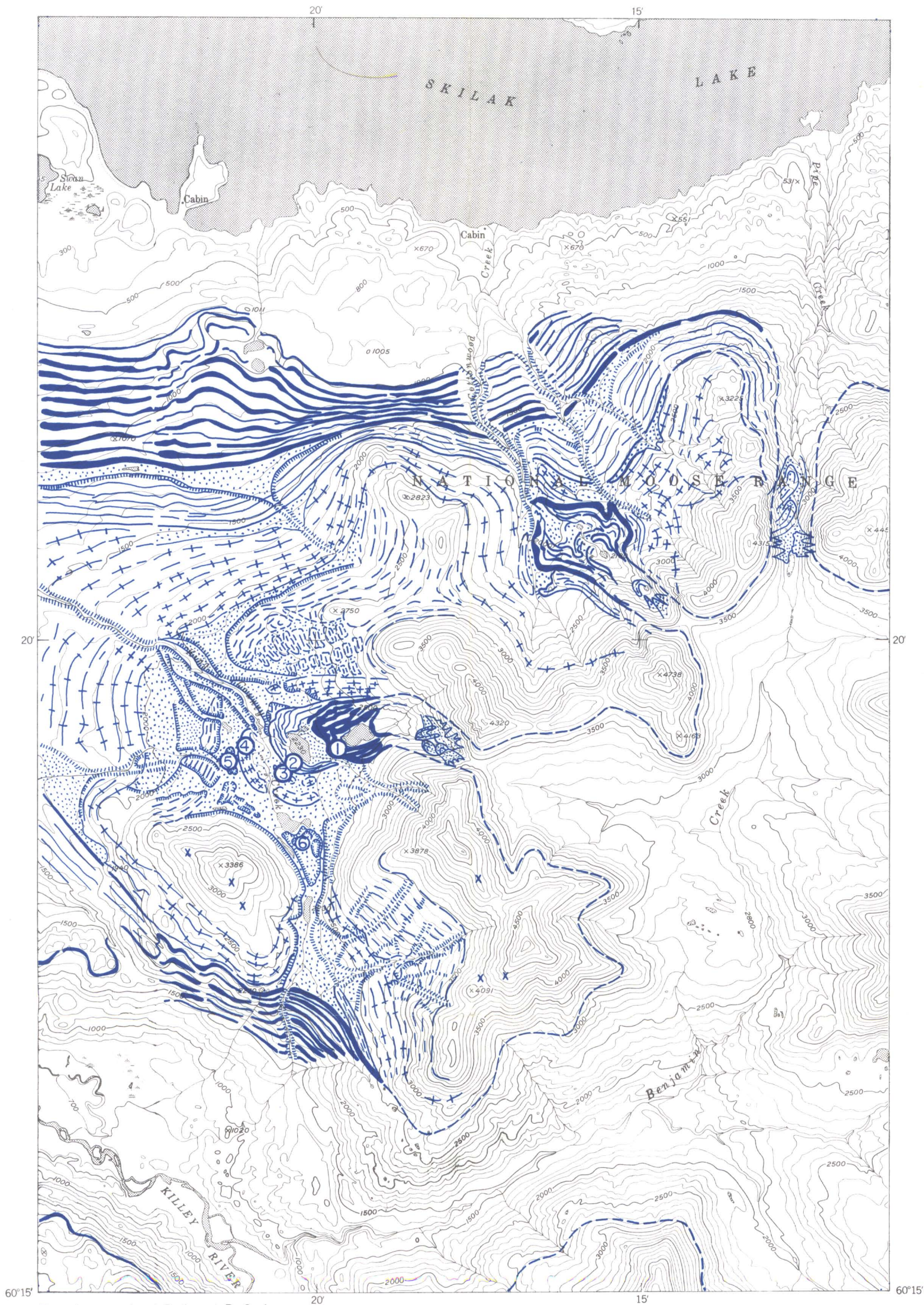
Approximate boundary of icefield
that filled the Benjamin Creek
valley head during Naptowne
time



Location of boulder erratics of
Caribou Hills and Mount Susitna
age



Location of surface-boulder count
sites (see text)



Base from parts of B-1 and B-2 of
Kenai topographic sheet, Alaska
series

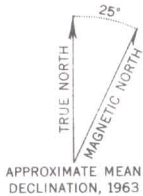
INTERIOR—GEOLOGICAL SURVEY, WASHINGTON, D. C.—62310

SKILAK PLATFORM AND ADJOINING AREAS,
KENAI PENINSULA, ALASKA

SCALE 1:63 360



CONTOUR INTERVAL 50 AND 100 FEET
DATUM IS MEAN SEA LEVEL



APPROXIMATE MEAN
DECLINATION, 1963